

L.C. Homecoming --- Brackets --- 1960's

Lincoln University

VS.

Kentucky State



Homecoming

Sat., Nov. 6, 1965

2:00 P. M.

Lincoln Field

MISSOURI TRANSIT LINES, INC.

"The Shorter Route"

SAFE, DEPENDABLE SERVICE

Passenger Schedules—Charter Service—Package Express

For Detailed information contact

Our Agent:

MISSOURI TRANSIT BUS DEPOT

315 Jefferson Street

Jefferson City, Mo.

Phone 635-2666

CATERING MANAGEMENT INC.

"EXCLUSIVE CATERERS TO LINCOLN UNIVERSITY"

—CHRISTIAN COLLEGE AND WILLIAM WOODS COLLEGE—

HOME OFFICE

CHRISTIAN COLLEGE

COLUMBIA, MISSOURI 65201



Greetings from The President

November 6, 1965

Dear Alumni, Former Students, and Friends:

Lincoln University triumphantly survived the challenges and crises of one hundred eventful years. Although these years have witnessed changes in the individual pattern of our lives, the purpose of this institution, as conceived by those gallant soldiers of long ago, has remained steadfast.

Through a Century of service, Lincoln University has been dedicated to one broad goal—the betterment of lives of the youth of Missouri through education. And in order to achieve this goal in a changing society, it has been most essential that we should avoid any tendency in the pattern of education at this institution to become static.

It has been this ability to adapt itself to the changes and new demands and needs of the youth of this state through succeeding generations that has enabled Lincoln University to become the great institution that it is today.

And so, it is with pride that we welcome you back to these high grounds to join with us in the celebration of Homecoming on our Centennial year.

I think that you will be as proud of us as we are of you, and your achievements. Certainly we will do everything in our power to make this so, and we hope that you will return to this campus year after year, in order that we may always remain in touch with each other.

Sincerely,

Earl E. Dawson
President

..... QUEENS



MISS LINCOLN UNIVERSITY
Miss Chequita Shaw
Senior
Kansas City, Mo.



SENIOR ATTENDANT
Miss Pansy Grimmatt
Kansas City, Mo.



SENIOR ATTENDANT
Miss Susan Heinen
Loose Creek, Mo.

AFTER THE GAME

Meet Me at

West Gate Lanes

Enjoy Bowling

Fine Food

Cocktail Lounge

Open 11 a.m. - 12 Midnight

Hiway 54 South

636-7108

Compliments of

Jefferson City Baking Company

MR. FRESHIE

and

HOBO BREAD

Wright Studio
Camera Shop

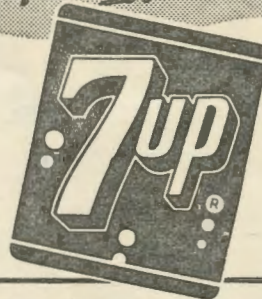
A COMPLETE LINE OF
CAMERA AND PHOTOGRAPHIC
SUPPLIES

428 Madison

Phone 635-4159

Jefferson City, Missouri

*For a quick
lift anytime...*



**Nothing does it
like Seven-Up!**

DR PEPPER-SEVEN UP
BOTTLING CO.

Jefferson City, Mo.

GOOD TASTE

GOOD FOOD

GRADE A

DARIGOLD PRODUCTS

*Landwehr Quality
Dairy*

KING QUALITY PRODUCTS

305 ASH STREET

JEFFERSON CITY, Mo. 65101

COMPLIMENTS OF

Schanzmeyer

FORD—LINCOLN—MERCURY

Jefferson City, Mo.

Schriefer's

OFFICE MACHINES

and

EQUIPMENT

316-320 Jefferson St.

TEL. 636-7412

Davis

CLEANERS ★ LAUNDRY

★ 911 E. High

★ 324 E. High

★ 430 W. McCarty

★ Hwy. 50 W.

CALL 635-1422

COMPLIMENTS

Turner's Food

Clark & Atchison Street

COMPLIMENTS

Hotel Governor

Jefferson City's Finest

Fighting Tigers . . . About 1912



Seniors on the L.U. Squad



Left to Right: James Tolbert, Edward Cromartie, Emmanuel Belland, Harold Robinson, Robert Dozier, Wallace Davis, Alton Adams, Howard Christian.

... and More Queens



The ROTC Contributors (Left to Right) Murriel Pruitt, Queen Sylvia Palmer, Jeanette Robinson, Ruthellyn Rowles and Edwa Cannon.

Fighting Tigers, 1965



Telephone 635-6881

Scruggs-Guhleman Lumber Company

In Milibottom

Jefferson City, Missouri

"Quality in all the Name Implies"

Quality Cleaners

124 East High Street

Particular People Call 636-4153

SAMCO Business Suplies Inc.

Brief Covers, Engineering Supplies

Ring Books, Fountain Pens,

Brief Cases

220 MADISON STREET

Phone 636-3177

MAY WE HELP YOU WITH YOUR FOOTWEAR NEEDS

Town & Country

Citations

Sandler of Boston

Joyce

Cover Girl

Selby

Adore's

FOR MEN

Bostonians

Mansfield

Jarman

Bates

French Shriner

British Walker

Wrights Arch Preservers

*American
Shoe*

221 E. High
Jefferson City, Missouri

ENJOY THE GAME



Enjoy the pause
that refreshes
with ice cold Coke

LINCOLN UNIV.

88	Jack Wilson	C	190
87	Robert Jerrod	E	180
86	Ludie Martin	E	170
83	Edward Cromartie	E	190
82	Homer Cavitte	E	185
81	Boyce Smith	E	195
80	James Tolbert	E	200
78	Robert Dozier	T	250
76	Henry Burnette	T	205
75	Walter Bradley	T	220
74	Douglas Brown	T	205
73	James Sullivan	T	215
72	Oliver Holt	T	260
71	Gary Franken	T	200
70	Henry Hailstock	T	225
68	James Brown	G	190
66	George Turner	G	230
65	Paul Hartman	G	215
64	Wallace Davis	G	205
62	Willie Smith	G	180
61	Henry Rome	G	190
60	Robert Woods	G	200
52	Aaron Martin	G	185
35	Floyd Walker	G	215
63	Rodney Robinson	G	195
53	James Hall	G	205
51	Harold Robinson	T	235
50	Melvin Clarke	C	210
42	Donald Bates	B	205
41	Tilford Hawkins	B	165
40	Charles Hamber	B	180
24	Willie Jarvis	B	180
36	George Walker	B	170
34	Floyd Davis	B	185
33	Eddie Edwards	B	210
32	Charles Hampton	B	200
31	Charles Boldon	B	190
23	Ezekiel Moore	B	185
22	Thomas Tucker	B	165
21	Gerald Woodard	B	195
20	Howard Christian	B	165
16	Ishman Burks	B	170
14	Alton Adams	B	160
10	Wayne Powell	B	160

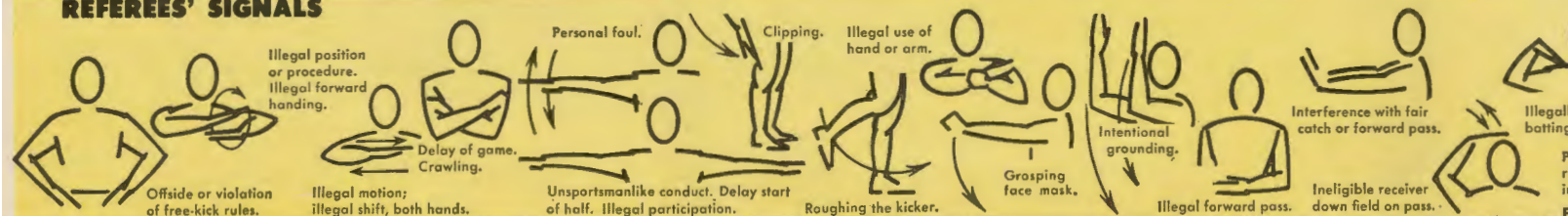
L.U. DEFENSIVE

83	Edward Cromartie
80	James Tolbert
78	Robert Dozier
73	James Sullivan
64	Wallace Davis
53	James Hall
61	Henry Rome
42	Donald Bates
82	Homer Cavitte
41	Tilford Hawkins
16	Ishman Burks

LINCOLN U. OFFENSE

83	Edward Cromartie
80	James Tolbert
70	Henry Hailstock
51	Harold Robinson
66	George Turner
76	Henry Burnette
50	Melvin Clarke
33	Eddie Edwards
32	Charles Hampton
21	Gerald Woodard
14	Alton Adams

REFEREES' SIGNALS



"COCA-COLA" AND "COKE" ARE REGISTERED TRADE-MARKS WHICH IDENTIFY ONLY THE PRODUCT OF THE COCA-COLA COMPANY

GAME



things go
better
with
Coke
TRADE-MARK®



KY. STATE

U. DEFENSIVE TEAM

ward Cromartie	CB
es Tolbert	CB
ert Dozier	E
es Sullivan	E
lace Davis	T
es Hall	T
ry Rome	LB
ald Bates	LB
ner Cavitte	LB
ord Hawkins	S
nan Burks	S

OLN U. OFFENSIVE TEAM

ward Cromartie	E
es Tolbert	E
ry Hailstock	T
old Robinson	T
rge Turner	G
ry Burnette	G
vin Clarke	C
ie Edwards	FB
les Hampton	LH
ald Woodard	RH
n Adams	QB

KY. STATE OFFENSIVE TEAM

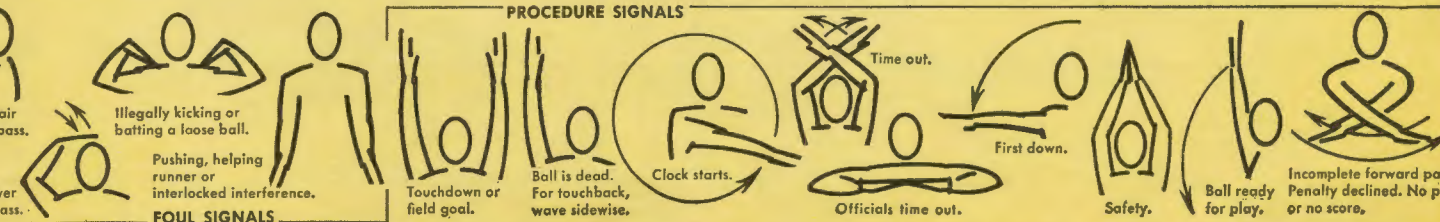
89 Eddie Hardwick	E
84 John Upthegrove	E
77 Clint Lovely	T
79 William Burley	T
60 Wayne Lee	G
64 Joe Reese	G
59 Richard Brown	C
16 Carl Wade	QB
26 James Jackson	LH
29 Paul Cornett	RH
37 William Whyte	FB

KY. STATE DEFENSIVE TEAM

75 Charles Spann	E
72 John Burleson	E
70 George Hines	T
76 Willie McDougale	T
73 Larry Young	LB
35 James Ruffin	LB
48 John Oakes	LB
44 Roger Laird	DB
27 Maurice Hunt	DB
28 Leon Cegers	DB
22 Billy Leach	DB

10 Robert Watkins	B	197
16 Carl Wade	B	193
19 Grover Nicholson	B	165
20 Teclumsy Wright	E	182
22 Billy Leach	B	175
25 Willie Dickerson	B	172
26 James Jackson	B	180
27 Maurice Hunt	B	173
28 Leon Cegers	B	196
29 Paul Cornett	B	180
32 John Finn	B	193
34 Louis Foster	B	185
35 James Ruffin	B	170
37 William Whyte	B	207
39 Robert Kemp	B	172
44 Roger Laird	B	187
46 Barry Moore	B	180
48 John Oakes	B	207
49 Leonard Butler	B	176
50 David Montgomery	C	225
56 Tom Lewis	C	225
59 Richard Brown	C	205
60 Wayne Lee	G	230
61 Foley Bustle	G	195
62 Melvin Jones	G	220
63 Larry Harrison	E	205
64 Joe Reese	G	205
65 Samuel Prather	T	244
66 Freddie Hatcher	G	255
67 Truman Mitchell	G	210
70 George Hines	T	219
72 John Burleson	T	260
73 Larry Young	T	235
74 Milford Hillie	T	230
75 Charles Spann	T	215
76 Willie McDougale	T	290
77 Clint Lovely	T	220
79 William Burley	T	252
80 J. J. Mark	E	193
81 Luther Campbell	E	209
82 Kenneth Wade	E	207
84 John Upthegrove	E	195
85 Eugene Walker	E	190

PANY



Wiring and Repairing
RESIDENTIAL — COMMERCIAL

Stop In and Visit Our
G I F T S H O P

A Grand Assortment of
Gifts for Every Occasion

**STOKES
ELECTRIC CO.**

226 Madison

Dial 636-2167

**Wingies Sandwich Shop
&
Recreation Center**

622 & 624 EAST DUNKLIN

"Wherever Your Money Buys More"

HOURS:
6 A.M. to 12 P.M.
Six Days a Week

WINGIE, Manager

East End Pharmacy

630 East High St.

Prescriptions & Sundries

School Supplies

Phone 636-3733

A Friend Always



**BILL
WALLENDORF**

"Home Folks"

**Thrifty Finance
and Credit Company**

Jefferson City — Columbia

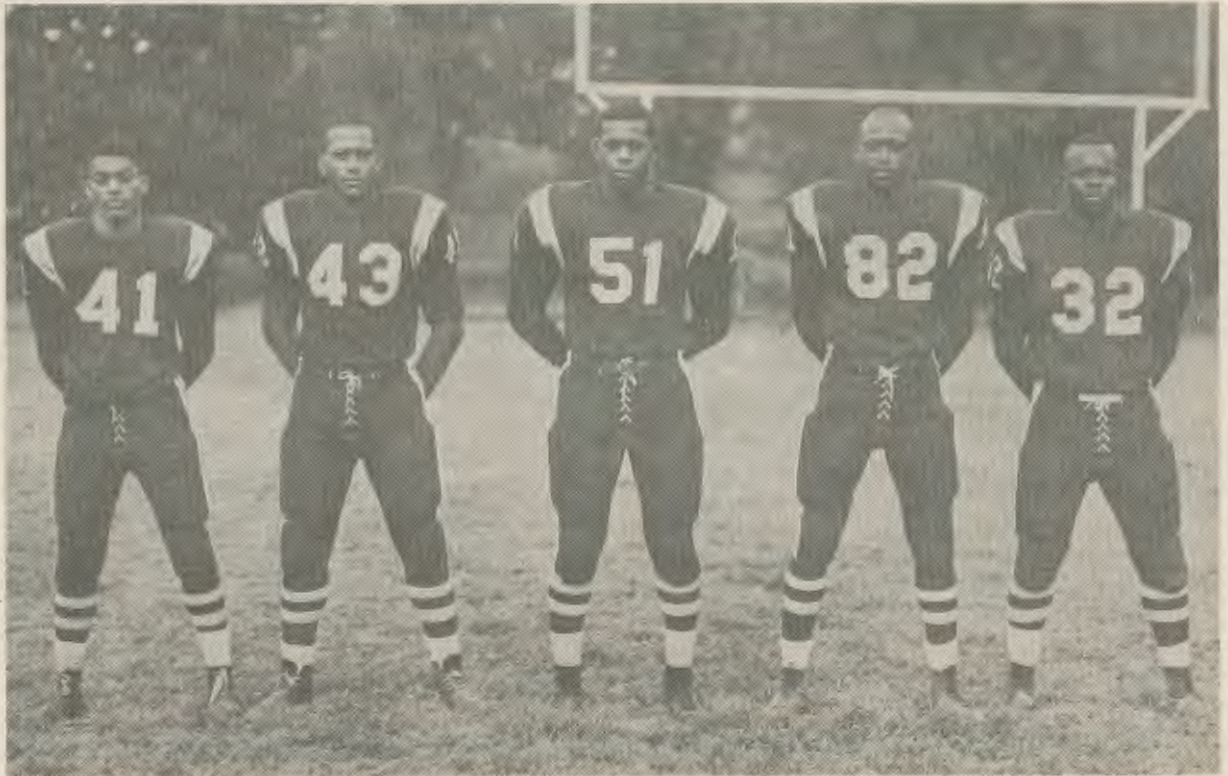
Fulton — Eldon

Boonville



Strategy Board

Conferring with the co-captains of this year's squad are Coach Dwight Reed and his assistants. (Left to right) Coach Dwight Reed, Assistant Coach Alphonso Thompson, Captain James Tolbert, Captain Alton Adams, Assistant Coach Raymond Hooper, and Assistant Coach Jonathan Stagers.



Missouri's contribution to the 1965 starting units are from left to right, Tilford Hawkins (Jeffer-

son City), Eddie Edwards (St. Louis), Harold Robinson (Poplar Bluff), Homer Cavitt (St. Louis),

and Charles Hampton (Poplar Bluff).

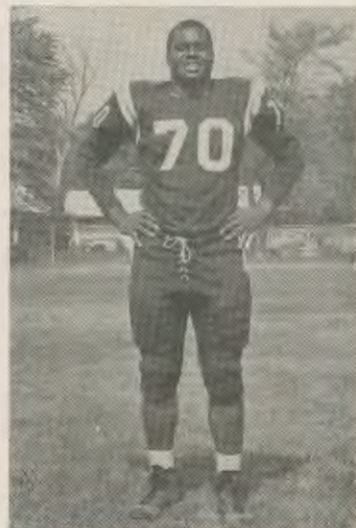
Stalwart Tigers . . .



George Turner
Guard



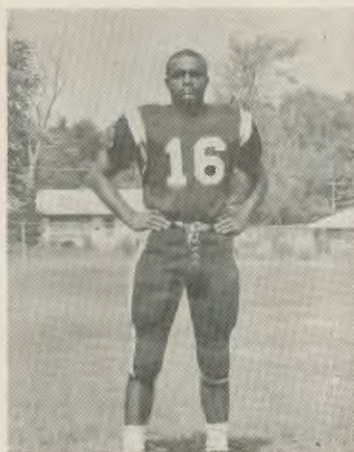
Gerald Woodard
Back



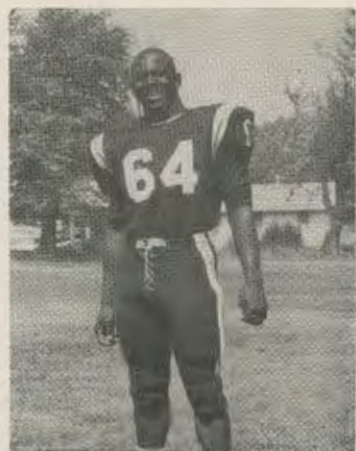
Henry Hailstock
Tackle



Ezekiel Moore
Back



Ishman Burks
Back



Wallace Davis
Guard

S & M ATHLETIC GOODS

222 E. High

Jefferson City, Mo.

— Also —

STORES IN

COLUMBIA — SEDALIA — ST. JOSEPH — SPRINGFIELD

Arden's Interior

PHONE 636-2181

Rackers & Baclesse,
Inc.

PHONE 636-6101

Building Materials, Paints, Draperies
Rugs & Floor Coverings

423-425 W. Dunklin
Jefferson City, Missouri



IT'S BEST

Phone 636-4133

RESIDENTIAL — COMMERCIAL

**Wiring and Repairing
No Job to Big—No Job to Small**

**Visit Our Lantern Room
Assortment of Name Brand**

**Electrical Fixtures
MOE—STARLIGHT—
INTERNATIONAL—AND
MANY OTHERS**

**G. & H. Electric
AND
NEON SIGN CO.**

**2511 Industrial P. O. Box 214
Jefferson City, Missouri
635-6847 635-3533 Res.
636-8331**

Gene Schenewerk, Pres.

Missouri Motor Hotel

"Another Friendly Boss Hotel"

HOME OF

"THE STEAMBOAT LOUNGE"

Finest of Foods at Popular Prices

400 E. High St. Jefferson City

Congratulations to the Lincoln Tigers!

EQUIPPED WITH FAMOUS BRAND NAMES

FROM

Gateway Sporting Goods

MORROW MASON

JEFFERSON CITY, MISSOURI

TEL. 635-7318

McGREGOR — RIDDELL — RAWLINGS

...from
Kentucky State Prexy

To The President, Faculty, Staff, Students And Alumni Of
Lincoln University

Greetings:

We at Kentucky State College are happy to extend to you our warmest greetings upon an occasion which again brings together Lincoln University and Kentucky State College in athletic competition. A historic rivalry, which is part of this traditional meeting of the "Tigers" and the "Thorbreds," assures us that both teams will play their best game.

Homecoming is always an exhilarating experience, for it provides an opportunity to renew friendships, to remember the achievements and pleasures of the past, and to rejoice in the progress of our Alma Mater. Homecoming also inspires us to give more and more support to the institution which is our home.

We look forward to a continuation of the friendship which has existed between our institutions for many years.

Sincerely,

Carl M. Hill, *President*



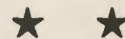
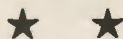
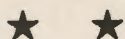
Carl M. Hill



Miss Kentucky State

MISS JOYCE ANN LAWSON

Kentucky State Thorobreds



About Kentucky State...

Kentucky State College was established by the General Assembly in 1886. The name of the college has changed three times since 1886. It was changed in 1952 to its present name, Kentucky State College, located in the capital city, can be reached by highway 60 and 421 and near Interstate 64. The Louisville and Nashville railroad and the Chesapeake and Ohio trains pass through. Airlines are available at Lexington, Kentucky a distance of 22 miles from the college.

The institution is a member of the Southern Association of Colleges and Schools and offers four-year undergraduate programs. In 1963, the college established a two-year Community College as a part of its service program. The College has an undergraduate student enrollment of 924; the student body and faculty are integrated.

Jefferson City Oil Co.

DISTRIBUTOR

Conoco

Products

B. F. Goodrich Tires

Visit One Of Our Friendly Stations

Near The School Area

TURNER'S
Adam & McCarty

SOUTHSIDE
CONOCO
Madison & Dunklin

Your Patronage Is Appreciated

SHRYACK-HIRST GROCERY CO.



JACK SPRAT FOODS

530 East State Street

Jefferson City, Missouri

Phone 636-7181

A FOCAL POINT

in business is accurate communications, and you can improve yours by calling on MODERN LITHO-PRINT CO. in Jefferson City to effectively and economically print that catalog or those business forms (including snap-aparts and continuous forms) or statements or internal inventory forms . . .

or just about anything else that helps run your business smoothly.

MODERN *Litho-Print Co.*

413 Madison St. Jefferson City, Mo.

Area Code 314-635-6119

Anton Hiesberger, President

Creative Lithographers Since 1937

HACKMANN MUSIC & SOUND SERVICE

Distributors for

Language Laboratory Systems
Sound Systems
Intercommunication Equipment
Film Projectors
Record Players
Electronic Trainers
Tape Recorders
Seeburg Background Music

1127 Leslie Blvd.

Phone 636-8831

Jefferson City, Missouri

ESTABLISHED 1865



...the bank with time for you

1st BSC #2
2nd BSC #3
7 leaves

"MY BANK"

TO OVER 20,000 MISSOURIANS



MEMBER FEDERAL DEPOSIT INSURANCE CORPORATION

3 Blue Keyes (19)
2 leaves
1st 20 at Blue #2