



Carl M. Connor
300 Lyman St
Columbia, Mo.





The 1930 QUILL

Published

by the

Senior Class

of

Lincoln University



FOREWORD

The hope that the many happy moments spent at Lincoln may never be forgotten and that its spirit may be installed in the hearts of the sons and daughters of Lincoln, is the purpose of this book.

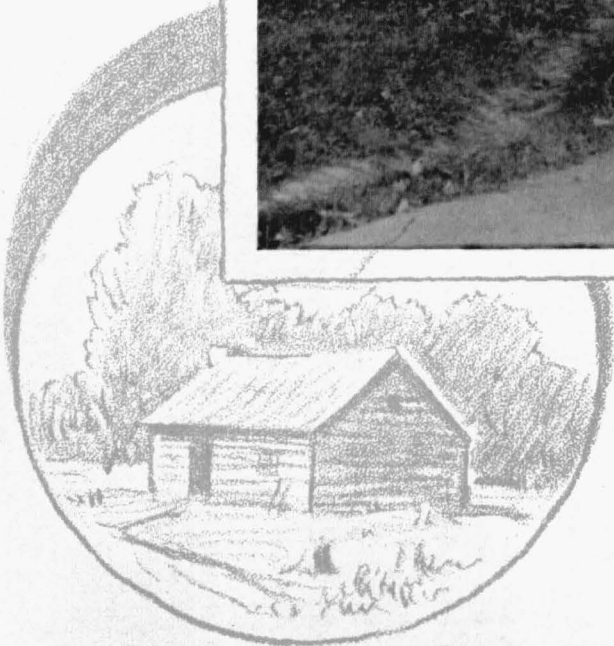


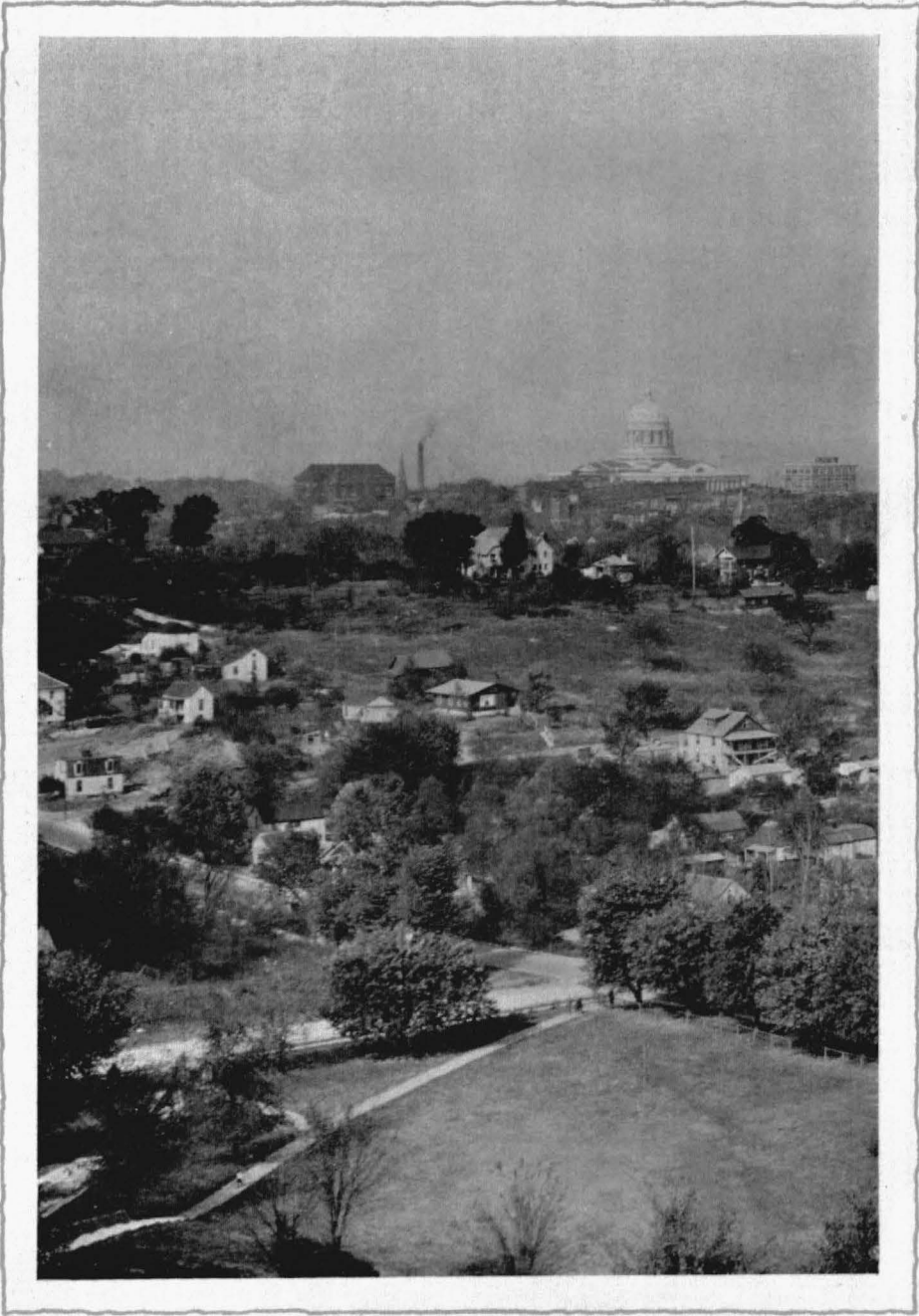
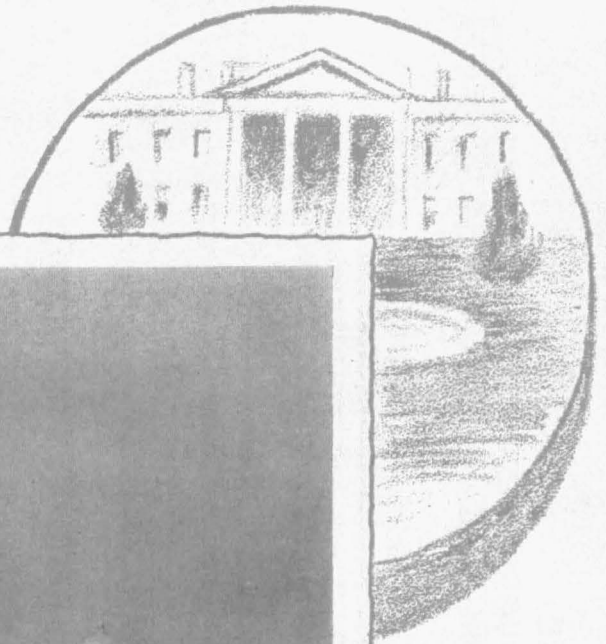
DEDICATION

To the memories of Lincoln,
this volume is gratefully
dedicated in hopes that his
ideals may live forever
in the students of
the University.

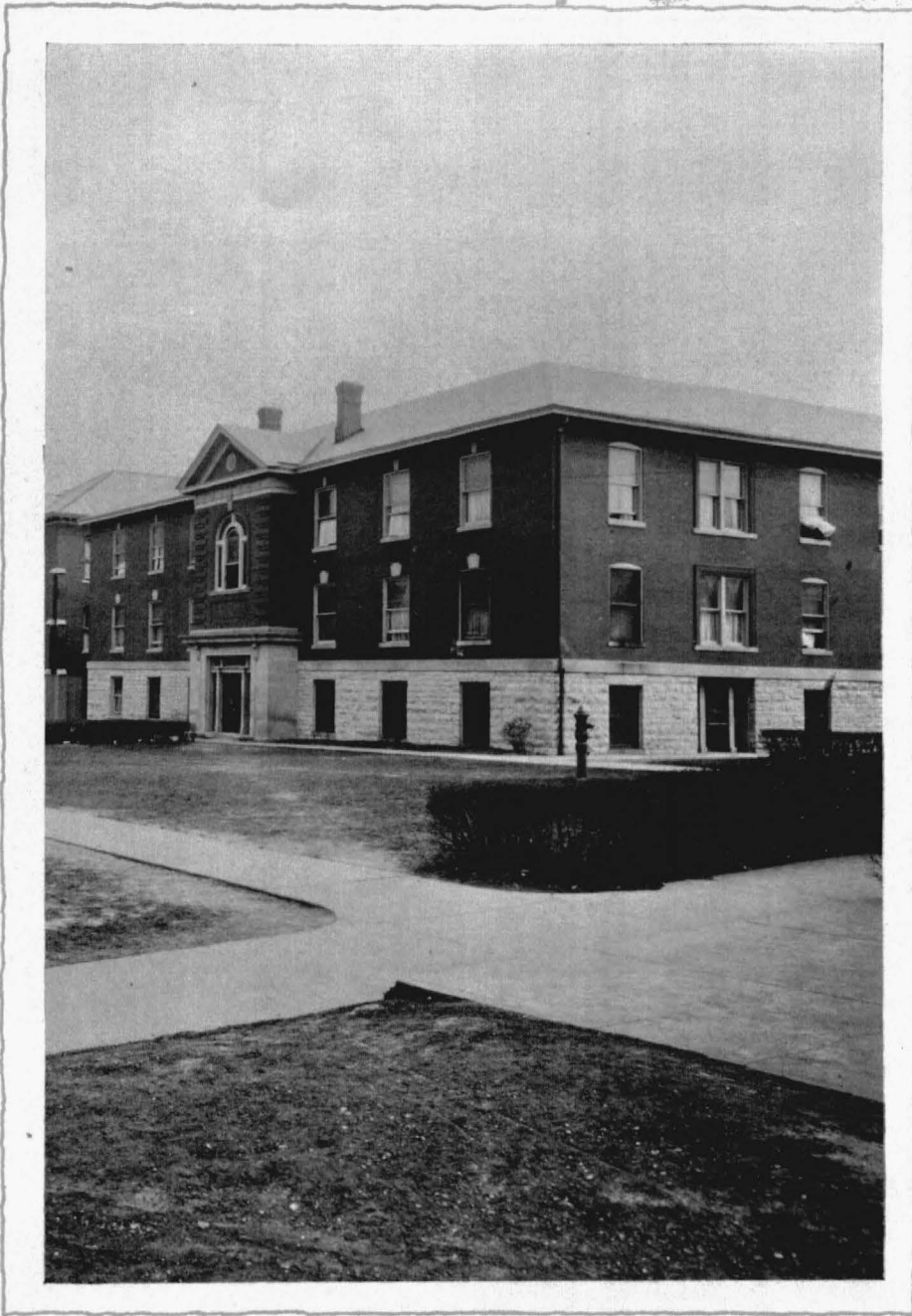
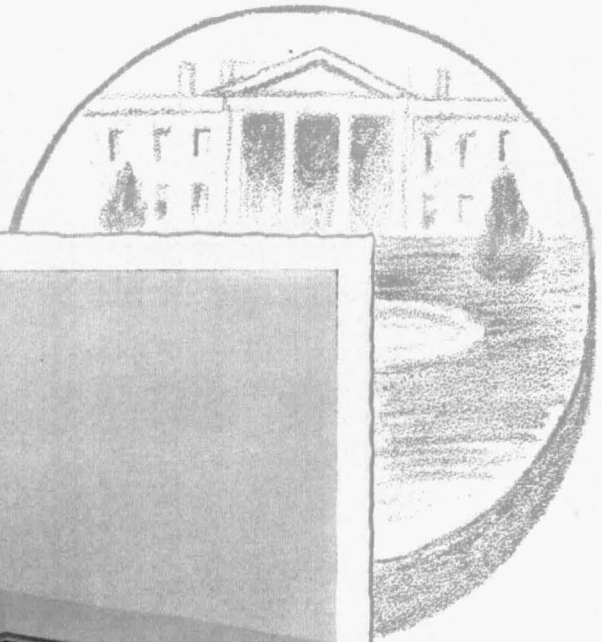
❦

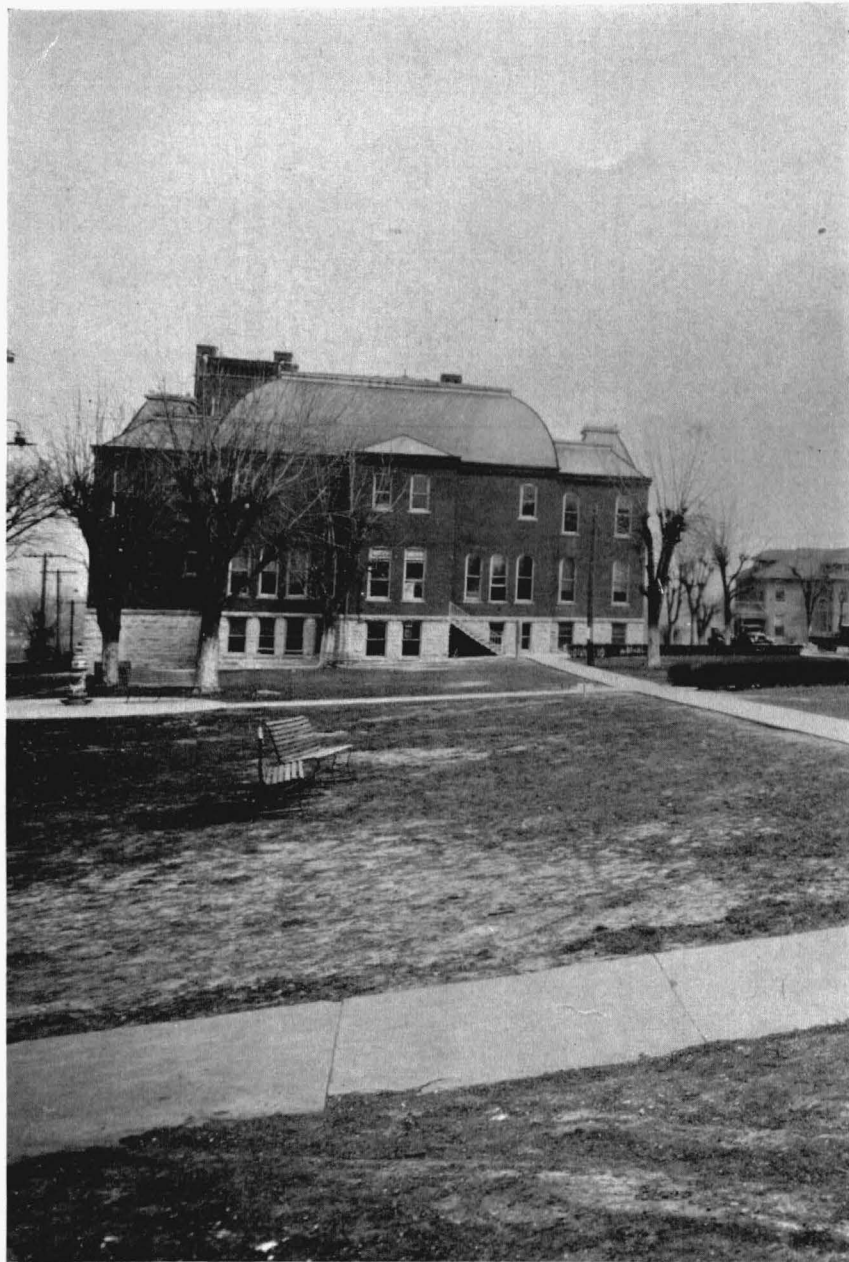
To the memories of Lincoln,
this volume is gratefully
dedicated in hopes that his
ideals may live forever
in the students of
the University.

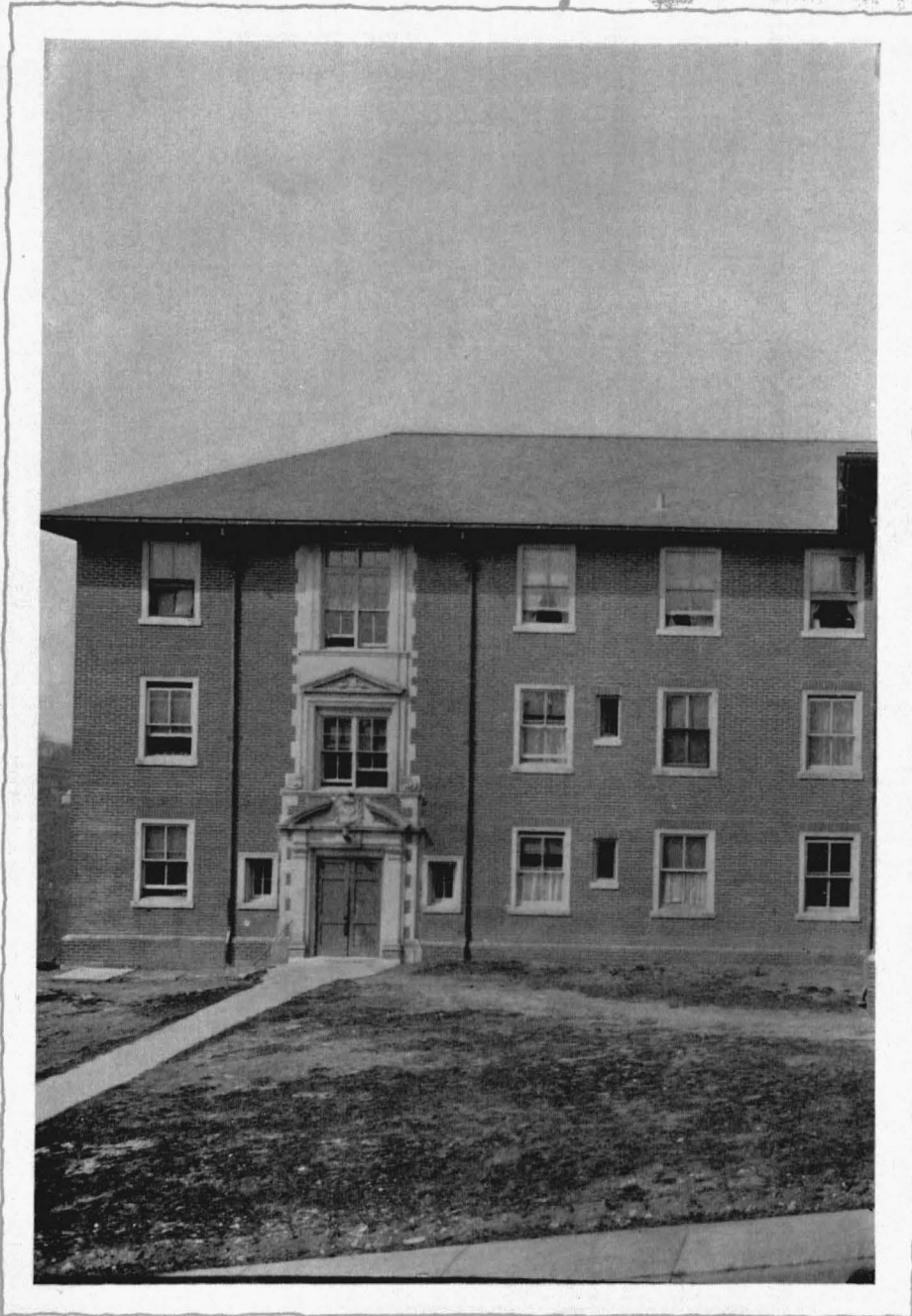
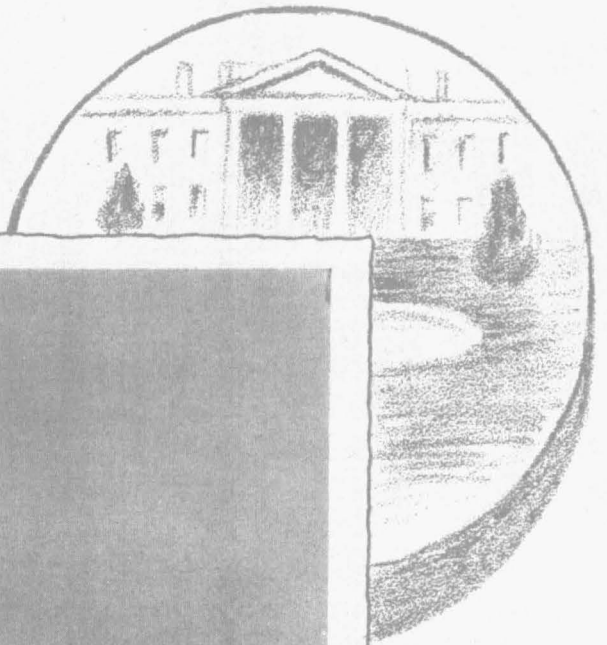






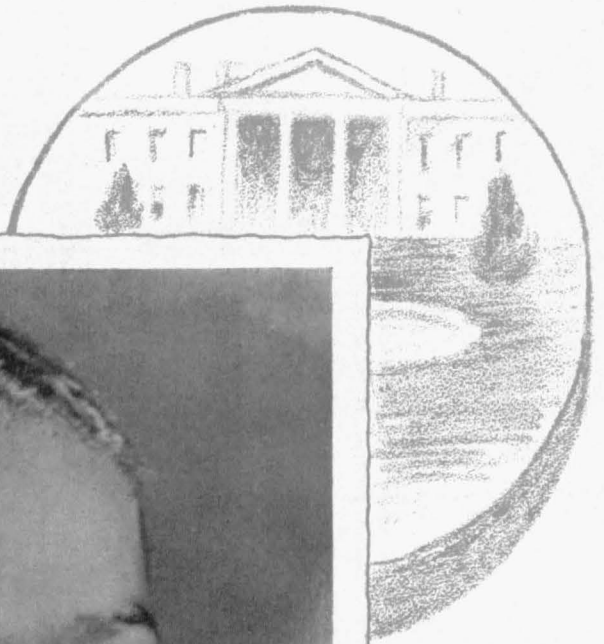








Queen of the Quill, 1930
MISS EDITH GREENE
of St. Louis, Mo.



Most Popular Young Man
(College), 1930
MR. ROY LEE JOHNSON
of Monroe, Louisiana



*Most Popular Young Woman
(College), 1930*

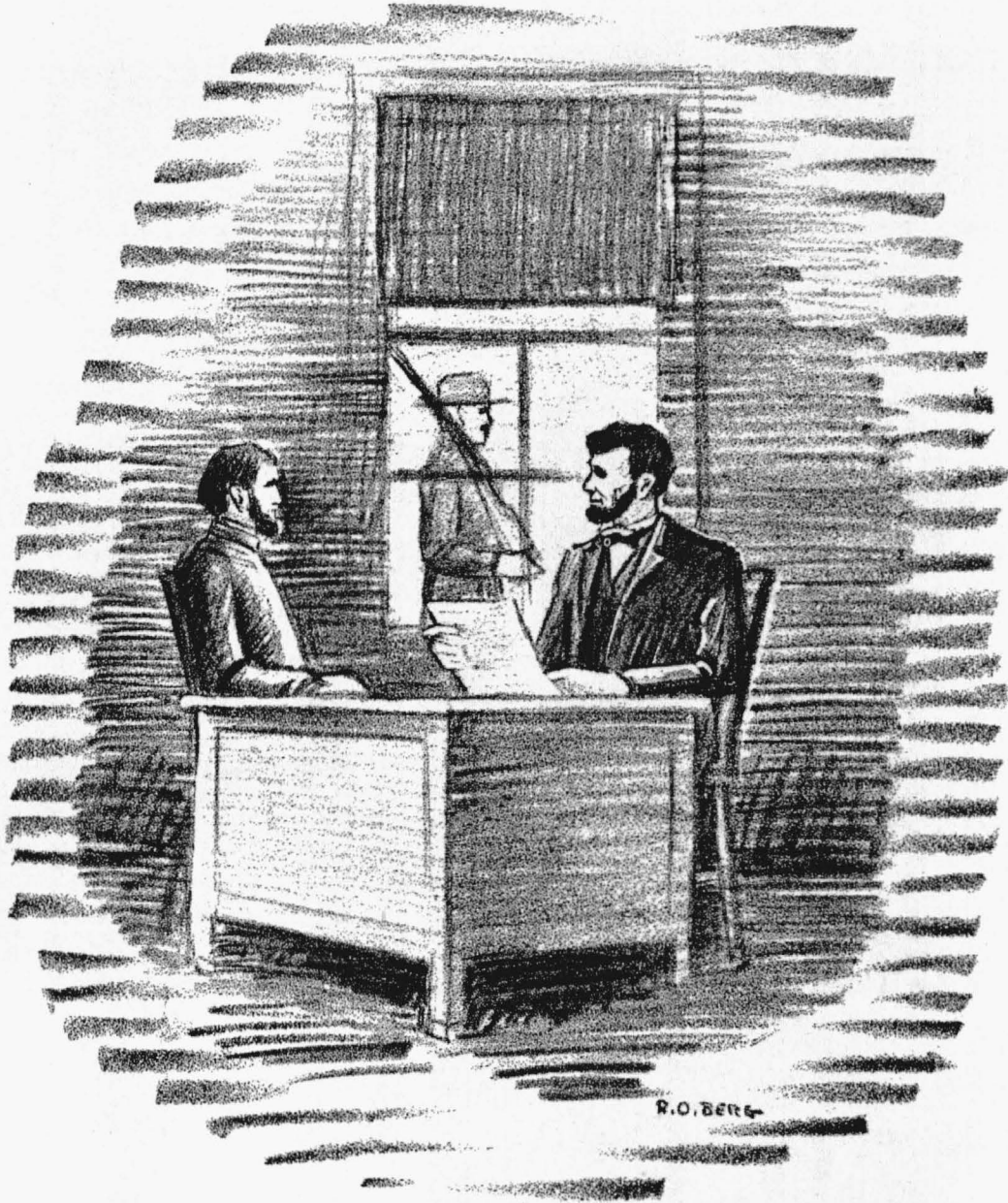
MISS COLLETTE ABBOTT
of Jefferson City, Mo.



Most Popular Young Man
(High School), 1930
MR. SAMUEL DUNCAN
of Norborne, Mo.



Most Popular Young Lady
(High School), 1930
MISS FLORENCE WRIGHT
of New Franklin, Mo.



Administration

Page 15

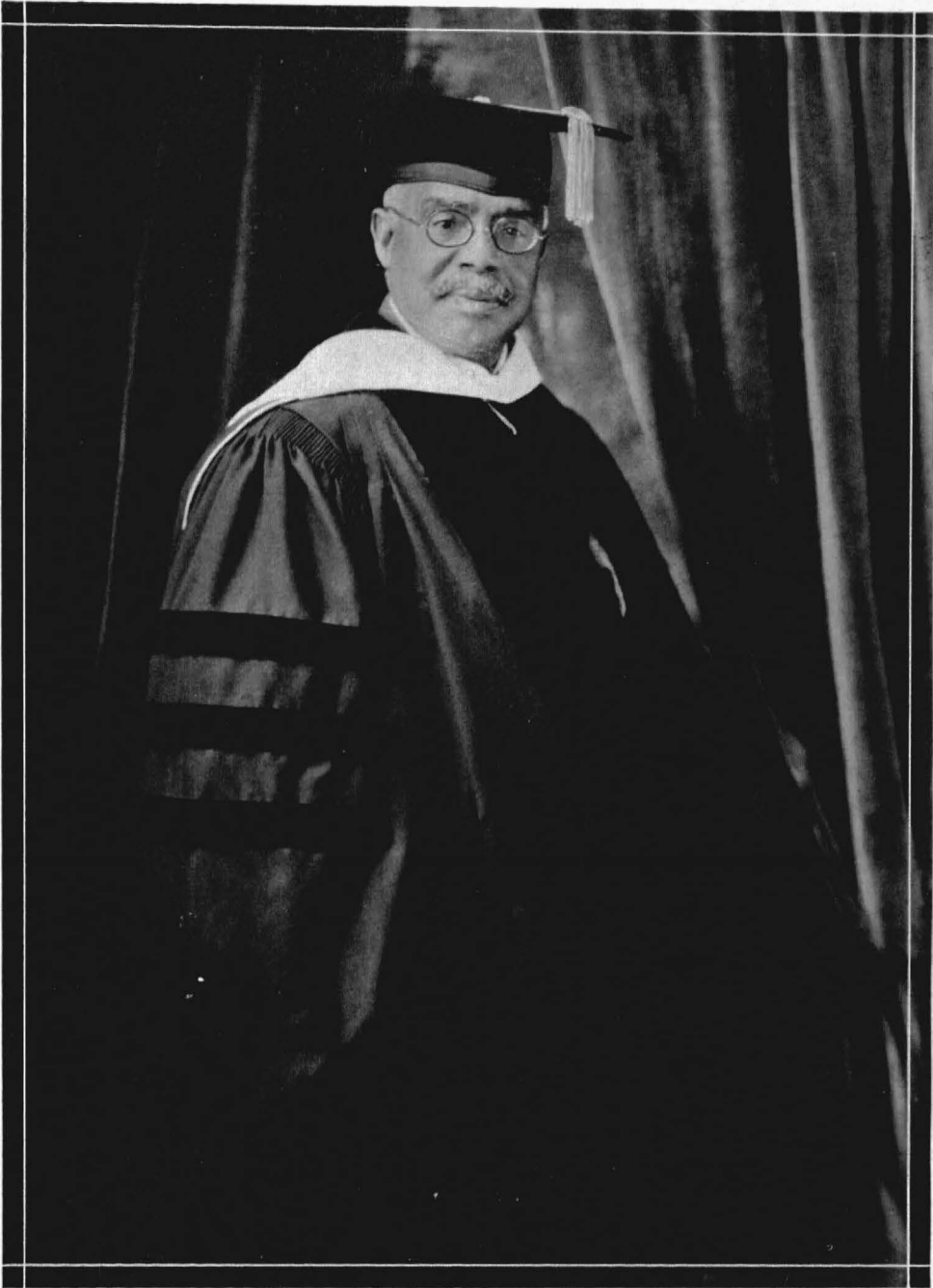
1930

BOARD OF CURATORS

J. D. ELLIFF	<i>Columbia, Mo.</i>
J. B. EDWARDS	<i>St. Louis, Mo.</i>
J. B. COLEMAN	<i>Columbia, Mo.</i>
MRS. W. P. CURTIS	<i>St. Louis, Mo.</i>
DR. E. B. PERRY	<i>Kansas City, Mo.</i>
MR. T. B. WATKINS	<i>Kansas City, Mo.</i>
CHARLES A. LEE (Ex-Officio)	<i>Jefferson City, Mo.</i>

OFFICERS OF ADMINISTRATION

N. B. YOUNG	<i>President</i>
W. B. JASON	<i>Dean of College</i>
I. C. TULL	<i>Business Manager</i>
A. HALL	<i>Secretary to President</i>
I. HERON	<i>Nurse</i>
E. P. JONES	<i>Dean of Women</i>
N. P. BARKSDALE	<i>Acting Dean of Men</i>



PRESIDENT NATHAN B. YOUNG, A. M., Litt. D., LL. D.
A. B., Oberlin College, 1888; A. M., Oberlin College, 1891; Litt. D.,
Talladega College, 1915; LL. D., Selma University, 1923



W. B. JASON, A. B., A. M.
Dean of College, Professor of Mathematics
 A. B., Howard University, 1913.
 A. M., University of Pennsylvania, 1915.

CECIL A. BLUE, A. B., A. M.
Professor of English
 A. B., Harvard University, 1925.
 A. M., Harvard University, 1926.

LOVEY ANTHONY
Librarian
 Hampton Institute Library School, 1927.

JIMSIANA BRASSFIELD, B. S.
Domestic Science
 B. S. in Home Economics.
 O. S. U., 1917.
 Summer, University of Minnesota, 1929.

DR. HARRY S. BLACKISTON,
 A. B., A. M., Ph. D.
Professor of German
 A. B., University of Pennsylvania, 1917.
 A. M., University of Pennsylvania, 1918.
 Ph. D.—University of Pennsylvania,
 1920.
 Extension Div., University of Kansas,
 1926.
 Summer 1925 and 1926, University of
 Pennsylvania.

L. S. CURTIS, A. B., A. M.
Professor of Economics
 A. B., Harvard University, 1919.
 A. M., Columbia University, 1925.





W. W. DOWDY, A. B., A. M.
Biology

A. B., University of Iowa, 1923.
A. M., Cornell University, 1928.

MYRTLE LIVINGSTON, A. B.
Physical Education

A. B., Colorado State
Teachers College, 1926.
A. K. A. Sorority.

A. L. HAMMONDS, B. S.
Instructor of Agriculture

B. S., Prairie View College, 1922.

U. S. MAXWELL, A. B., M. S.
Professor of Chemistry

A. B., University of Colorado.
M. S., University of Chicago.

ALBERT A. KILDARE, S. B., A. M.
Physics

S. B., Boston University, 1921.
A. M., Boston University, 1927.

T. H. MILES, A. B., A. M.
Professor of Mathematics

A. B., Lincoln University, Pennsylvania
1918.
A. M., University of Pennsylvania, 1926.





ROENA E. MUCKELROY, B. M.
B. M., University of California, 1927.
Diploma, Voice and Theory, 1926.
Graduate Study, Chicago Musical College, 1929.

JAMES D. PARKS, B. S.
B. S., Bradley Polytechnic Inst., 1927.
Art Institute of Chicago, Summer 1929.
Art Institute of Peoria, 1926-27.

EUNICE PEPSICO, B. S., A. M.
B. S., Ohio State University, 1923.
M. A., Ohio State University, 1927.

SIDNEY J. REEDY, B. S., A. M.
Principal of High School
Assistant Professor of Latin
B. S. in Ed., Lincoln University (Mo.), 1926.
A. M., University of Iowa, 1928.

W. SHERMAN SAVAGE, A. B., A. M.
Professor of History
A. B., Howard University, 1927.
Graduate Student University of Kansas, Summers, 1921-24.
A. M., University of Oregon, 1925.
Graduate Student University of Oregon, 1925.

DAVID M. WATERS, A. B., A. M.
Instructor of Commerce
A. B., Lincoln University, Pennsylvania, 1919.
A. M., New York University, 1920.

MACEO T. WILLIAMS
Instructor of Orchestra
New England Conservatory of Music.



MATRONS--

NURSE--

PROCTOR--

The QUILL



S. P. JOHNSON
Proctor of Foster Hall

I. KING
Matron of Barnes-Kreckel Hall

IRENE HERON
Nurse

J. MORRISON
Dining Room Matron

C. CARRION
Matron of Yates Hall

A. JOHNSON
Matron of Yates Hall



SENIORS



WILLIAM L. WYNN *Columbia, Mo.*

Major: Biology

Vice-Pres. $\Delta A \Phi$, '29, '30; Pres. Senior Class; Pres. Y. M. C. A., '28; Jones Biology Club; Capt. Football Team, '29.

MARIE LOUISE RAY *St. Joseph, Mo.*

Major: Mathematics

$\Delta \Sigma \Theta$ Sorority; Pres. Mathematics Club; Biology Club; Glee Club; Chorus; Y. W. C. A.; Cheer Leader, '27, '28, '29, '30; Library Assistant.

FRANCES A. RANDALL *Cape Girardeau*

Major: History

$\Delta \Sigma \Theta$ Sorority; Glee Club; President of History Club, Athletic Council; Y. W. C. A.

FINIS W. SIMMS *Sedalia*

Major: Biology

Le Beau Brummel Club; Biology Club; Football, '25, '26, '27, '28; Chorus, '28, '29; Varsity Quartet, '28, '29.

HADLEY HARTSHORN *St. Joseph*

Major: Chemistry

President $\Delta A \Phi$ Club; Pres. Dramatic Art Club, '27, '28; Science Club, '27; Track Manager, '28, '29; Pres. of Class, '28, '29; Editor of Quill, '30; Chemistry Assistant.

RUTH ALLEN *Jefferson City*

Major: French

$\Delta \Sigma \Theta$ Sorority; French Club.

HENRIETTA PEARLEY *Liberty, Mo.*

Major: English

$\Delta \Sigma \Theta$ Sorority; History Club; Y. W. C. A.; Assistant Librarian.

ARTHUR C. SHROPSHIRE *Paris*

Major: Biology

$\Delta A \Phi$ Club, '28-'30; Pres. of Jones Biology Club; Dramatic Art; Quill, '30; Business Mgr. of Baseball; Basket Ball, '30; Ass't Inst. of Biology, '28-'30; Track, '28-'30; Football, '27.





ELIZABETH ROSS

Hannibal

Major: History

ΔΣΘ Sorority; History Club; Y. W.
C. A.

CHARLES PATTERSON

Moberly, Mo.

Major: Social Science

ΓΨΕ Club; History Club; Class
Basket Ball.

LEANDER ROGERS

Nowata, Okla.

Major: Mathematics

Le Beau Brummel Club; Annual
Staff; Mathematics Club; Track, '27,
'28, '29, '30; Football, '27, '28, '29,
'30; Basket Ball, '27, '28, '29, '30.

GWENDOLYN SMITH

St. Louis, Mo.

Major: English

Chorus; Quill Staff.

MARINDA FERGUSON

Marshall, Mo.

Major: History

ΔΣΘ Sorority; History Club; Glee
Club; Chorus; Quill Staff.

BERNARD L. GRAVETTE *Cape Girardeau, Mo.*

Major: Chemistry

ALBERT Y. LANDSDOWNE

Jefferson City,

Major: French

ΓΨΕ Club; Pres. French Club;
Assistant Business Manager.

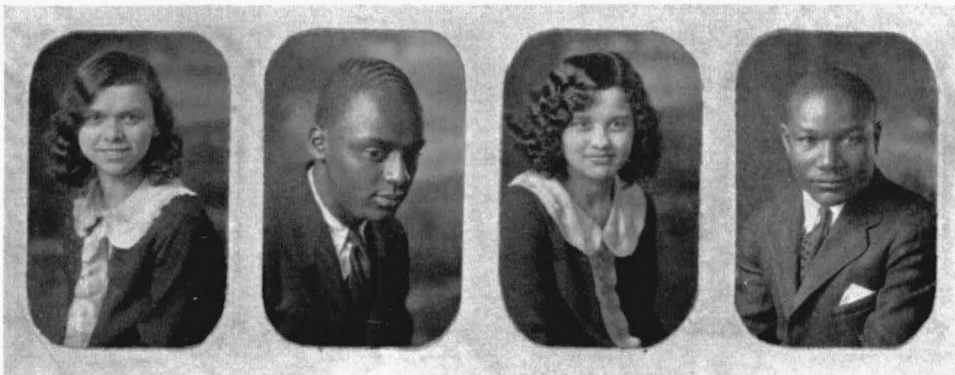
LEANETTA E. HILL

Kansas City, Mo.

Major: English

La Portella Club; History Club;
Literary Club; Quill Staff.





VIOLET KING *Jefferson City*

Major: French

A. K. A. Sorority; French Club; La Portella Club, '28, '29.

RICHARD KELLEY

Columbia

Major: Chemistry

Le Beau Brummel Club; Football.

JOSEPH F. BARNES

Kansas City

Major: Mathematics

Le Beau Brummel Club; Mathematics Club.

MRS. A. EWING

St. Louis

Major: English

VIRGIE I. GREENE

Jefferson City

Major: French

A. K. A. Sorority; French Club; La Portella Club, '29.

LEO JOHNSON

Hannibal

Major: English

ΓΨΕ Club.

A. L. CAMPBELL

Slater

Major: Chemistry

Le Beau Brummel; Football; Track; Quill Staff.

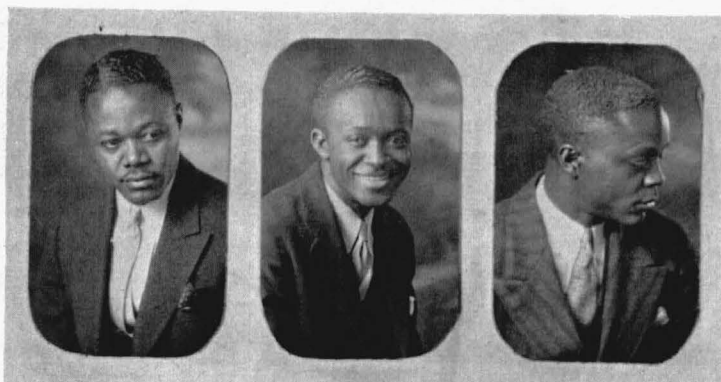
CHARLES LUNDERMAN

St. Louis

Major: English

ΩΨΦ Fraternity.





B. V. PHELPS *Chicago, Ill.*
Major: Biology
 Le Beau Brummel Club.

MARSHEL BEASON *Wagoner, Okla.*
Major: History
 History Club; Y. M. C. A.; ΔΑΦ Club.

R. T. GRACEY *Doner, Okla.*
Major: Biology
 ΓΨΕ Club; E. B. Jones Biology Club; Track; Basket Ball; Baseball.

EDWARD C. SMITH *Nowata, Okla.*
Major: Biology
 Le Beau Brummel; Jones Biology Club; Football; Basket Ball.

ROBA FARR *Kansas City, Mo.*
Major: History
 Baseball; Track.



SENIOR CLASS HISTORY

FOUR years ago, on September, 1926, a fine band of youthful Freshmen entered the foreign land of Lincoln University. We soon found it necessary to organize and thus we did with Jonathan Brooks as our president and Mr. L. F. Bates as our advisor. The natives of the land, or the upperclassmen, thought themselves superior, rather above us, and we found the Sophomores rather inimical for they thrust before our eyes a list of rules and regulations which all immigrants had to carry out before they could be Lincolnized. Since we were a conscientious, peace-loving group we stoically submitted to these rules and to the wearing of the green and purple caps.

After we were adjusted we found we had much talent among our fold which would fortify our group against any opposing one. On the athletic field we were represented by Messieurs Rogers, Walls, Benton, King, Smith, Turner and Simms. We had scholars in music, social studies and science in the personage; of Misses Randal, Cravens, Baker, Pearley and Messieurs Hartshorn, Barnes and Campbell.

In our second year the band began its work under the powerful leadership of Mr. Hadley Hartshorn, and we were rapidly filling our places in the diverse activities of the school. Miss Elizabeth Ross was elected president of the Young Women's Christian Association. Misses Marinda Ferguson, Ruth McKenzie and Mr. Frank Young became prominent in the musical world. Messieurs Rogers and Walls were winning honors in track and football.

In our third year our popularity had greatly increased and we were beginning to acquire much dignity. We had much more influence then than we had had in the two previous years. All of our members were also participants of some club. Some proved themselves great leaders by being presidents of one or more of these clubs. These were Misses Randal and Ross; Messieurs Hartshorn and Benton. Mr. Buckner Eden represented us in dramatics while Misses Ferguson, Ray, Cravens and Randal in music. This year our band was increased by the addition of two immigrants in the personages of Misses Violet King and Virgie Green.

Still plodding on, still playing a large part in the scholastic and social life of Lincoln, we are soon to fade from the field of action for we have reached our graduating year. We must leave dear old Lincoln, the country in which we had become naturalized and of which we are so fond, but bigger and better opportunities are calling us away soon to return. Our patriotism for Lincoln has been so instilled in us that wherever we may go we will always belong to the country of our naturalization—"Lincoln."

—RUTH ALLEN.

JUNIORS

The QUILL



METHA FINLEY *St. Charles*
Major: *French*

ΔΑΦ Club; Dramatic Art Club;
French Club.

LOREE LESLIE *Fort Worth, Texas*
Major: *History*

A. K. A. Sorority; History Club;
Basket Ball.

SARA HUBBLE *Little Rock, Ark.*
Major: *Chemistry*

A. K. A. Sorority; Mathematics
Club; Captain Varsity Basket Ball,
'29, '30.

ROBERT HILL *Jefferson City*
Major: *English*

ΓΨΕ Club; Baseball.

TOLLIE ELLIOTT *Muskogee, Okla.*
Major: *Mathematics*

Le Beau Brummel Club.

LOUISE CARTER *Sedalia*
Major: *English*

French Club; Artists' Guild, '29.

OLLIE M. NOEL *St. Joseph*
A. K. A. Sorority.

BASIL L. NORTH *Hartville*
Major: *Economics*
Le Beau Brummel.



The QUILL



WILLIAM B. WALKER *Webster Groves*
Major: Biology
 ΔΑΦ Club; Pres. Junior Class;
 Athletic Council.

ELIZABETH SANFORD *St. Louis*
Major: Biology
 Silver Leaf Club; Y. W. C. A.;
 Biology Club.

WILLIE L. WATSON *Kansas City*
Major: Biology
 La Portella Club; Biology Club.

ARIEL KING *St. Louis*
Major: Biology
 ΔΑΦ Club; Masons; Football.

JAMES R. BENTON *Kansas City*
Major: English
 ΓΨΕ Club; Ch. of Lit. Round Table;
 Ass't Bus. Mgr. Football; Track.

HORTENSE MILLER *Ft. Smith, Ark.*
 A. K. A. Sorority.

ELLA M. BROWN *Moberly*
Major: Social Science
 Orchestra.

MAYME A. BUFORD *Higginsville*
Major: Education



The QUILL



CARMEN STRICKLAND
Major: *Biology*
Le Beau Brummel Club.

St. Louis

MARIE GREEN

GWENDOLYN Y. TILFORD
Major: *English*
A. K. A. Sorority.

Columbia

WILBERT L. BERRY
Major: *Economics*
ΓΨΕ Club; Y. M. C. A.; Orchestra;
Band.

Kansas City,

VERTIS L. MOORE
Major: *History*
ΓΨΕ Club; History Club; Base-
ball; Tennis; Football.

St. Louis

KATHERLYN COWDEN
Major: *Education*
A. K. A. Sorority.

Kansas City

ETHEL M. SHADE
Major: *History*
A. K. A. Sorority; History Club;
Y. W. C. A.

Wagoner, Okla.

FANNIE LEE CAMPBELL
Kansas City,



The QUILL



MILDRED ROBINSON *Kansas City*
Major: English
 Silver Leaf Club.

JENNETTA M. HATCH *St. Louis*
Major: English
 French Club.

SAMUELLE TERRY *Kansas City*
Major: English
 La Portella Club; Basket Ball;
 Baseball; Volley Ball; Tennis.

EDDIE LUCILLE JONES *Columbia*
Major: Mathematics
 Mathematics Club.

VERNICE WARD *St. Louis*
Major: Social Science
 A. K. A. Sorority.



"A LITTLE LEARNING IS A DANGEROUS THING"

THE "Junior Class" first set sail upon the perilous sea of college education September 30, 1928, under the able leadership of Charles Norman, with a total membership of ninety-five gallant sailors, coming from various ports to learn the art of sailing life's great sea.

Since leaving port, however, the good ship has struck many a rugged rock, weathered many storms, losing however forty-five "gods." Fifteen of this forty-five leaned too far over the rail of the protecting ship and were swallowed by that wrecking monster, the "sixty-hour shark." About this same time the remaining thirty began to learn too much about the sea, the boat becoming too slow for them, decided to leave the ship and swim for the goal—but lo! their little learning was to them indeed a dangerous thing.

Being green in 1928 we of course had a tough time in keeping a captain for the good ship. Norman, due to adverse circumstances, had to give up the ship, much to the sorrow of everyone, and enter upon a different field. He was succeeded by Basil North, a midshipman, hailing from port Harteville. About this time after the ship was reported to be sailing with full steam forward there suddenly bobbed up in front of them the mighty destroyer—"Sophomore." However, instead of being a destroyer it turned out to be the mother ship—(one top of them all to put the green ones in place).

Having passed the first mark of the journey we looked forward to a delightful trip, and that we are having. The ship however has been captained since then by Messieurs Brown and Walker. Under their leadership they have won many spoils and conquered many ships. The great ship is still sailing on ever seeking their goal and ever giving aid to a forlorn and shipwrecked brother.

CLASS OFFICERS

<i>President</i>	WILLIAM B. WALKER
<i>Vice-President</i>	REUBEN BENTON
<i>Secretary</i>	WILLIE WATSON
<i>Treasurer</i>	ETHEL SHADE
<i>Advisor</i>	E. V. PEPISCO

—WM. WALKER.

SOPHOMORES



Top Row

WENDELL DOUGLASS
President of Class;
ΔΑΦ Club.

THELMA JOHNSON

CORNELL SETTLES

WALTER BRITT

ANNA PUGH
Silver Leaf Club.

Bottom Row

R. SMITH

EULA BARNES

ANNA MAE JACKSON

RUTH BURTON

A. K. A. Sorority.
CLEMENTINE SEXTON
ΔΣΘ Sorority.

Middle Row

NORMA EWING

CHARLES COURSEY

MISS J. BRASSFIELD (Advisor)

E. WARREN

ΓΨΕ Club.

ROSETTA WEAVER



Top Row

GEORGIA STEWART

D. KERFORD

B. SMITH

JOHN BOYD

ΓΨΕ Club.

WILHELMINA HARRISON

ΔΣΘ Sorority.

Bottom Row

IONE WATSON

C. BISCH

MAGGIE PEARLEY

CHARLOTTE MADISON

Middle Row

COLETTE ABBOTT

ANNETTE OVERTON

WAYMAN JENNINGS

C. HORDE

P. POWERS

SOPHOMORE CLASS HISTORY

IN THE fall of 1928, a group of boys and girls from various parts of the country entered this institution of learning to begin their life's training with grim determination to make good marks and good impressions.

Shortly after school opened we were given a "Getting Acquainted Social," where some of our life's friendship's were probably formed.

Notwithstanding the fact that we were green Freshmen, we, as raw material, made a worth-while contribution to this machinery of education. The strength of our football and basket ball teams was due to the sincere efforts of these enthusiastic beginners.

Not only did we make great strides scholastically, but we also received certain old traditions of the school.

The fall of 1929 found us looking back and commemorating upon our Freshman year. We were eager to acknowledge that we were Sophomores.

Although the incoming classmates were considered our keenest rivals as Freshmen, we extended to them a hearty welcome in the form of a moderate initiation.

The next year we made unusual contributions to our Alma Mater. Our classmates showed their talent on special occasions and outside extra-curricular activities. They entered with zest in the games of football, basket ball, baseball and outside competition. Others became affiliated with various clubs, such as Dramatics, Art, Biology, History, French and Debating Clubs. We excelled in everything. Other feats of ours were the elaborate social extended to the Seniors and our co-operation in the scholastic contribution to the school.

So our Sophomore Year which ends in June, 1930, finds us increasing our stride on the road to success. Although simple but wairing, we choose as our class motto:

"Deeds, Not Words."



The QUILL

FRESHMEN



First Row

R. L. JOHNSON
EDITH GREEN
CARL CONNER
MARJORIE GREEN
HERMAN DIXON

Second Row

LAURA B. MILLER
EMMA TAYLOR
CLARENCE TURPIN
RUTH REDD
PHOCILE WILSON

Third Row

ODESSA ALLEN
MILDRED WHEELER
EDMON BRODIE
LEILA HOGAN
DOROTHY DEAN

Fourth Row

GILBERTA NEAL
ALONZO WEST
DOLLY MAXWELL
MILTON THOMAS



First Row

PAUL JOHNSON
FANNIE BILLUPS
CHARLES BOWDEN
ADELE LANGFORD
STOBER DAVIS

Second Row

T. DRYDEN
ODESSA ARMSTRONG
TEAMUS STALLWORTH
ELIZABETH COBB
MAYDA MORGAN

Third Row

MARY REEVES
MAZELLA EPPS
WILLIAM LONIAN
NOLLIE M. WHITAKER
MARTHENIA BATES

Fourth Row

IZOLA SHEPARD
KENNETH SMITH
ELLA JACKSON
JESSIE ASHFORD

FRESHMAN CLASS HISTORY

AT THE beginning of this school year (1929) a large number of new faces were seen on the campus. By this fresh enthusiasm and this general air of newness they were soon singled out and marked by the upperclassmen as Freshmen.

On the occasion of the first class meeting September 27, the organization first realized its strength both in number, spirit and aggressiveness. There were seventy-nine students in the class, the largest to date, representing a large geographical area. Students were present from Arkansas, Oklahoma, Kansas, Colorado, and Illinois, as well as from all parts of Missouri. At this meeting the class officers were elected and a class advisor was chosen in the person of Mr. Dowdy, who has rendered his undaunting service throughout the year.

The class immediately began to make its presence felt in the student activities by its untiring efforts in promoting the student projects and the general welfare of the school. The first evidence of school spirit was shown during initiation week, the third week of school, which time Freshmen were obliged to live under rules that were prescribed and administered by the Sophomores, who showed an ability to devise humility and rules that bordered genius. However, the class survived the test and emerged from it thoroughly prepared to drink deeply of that "old Lincoln Spirit," and drink they did.

In interclass competition and co-operative projects the Freshmen class held its own, by winning the interclass stunt contest with a very creditable show, and winning for the class candidate the title "Queen of the Quill" and the "Most Popular Young Man."

In athletics they held their own, supporting mightily the Varsity football squad. Excellent track men were developed from this group as well as good baseball material.

In scholarship they ranked high, a number of the Freshmen making enviable records. The end of the first semester found some of the group withdrawing, but they were readily replaced by new members. On the whole this class is an interesting and a capable group which will undoubtedly become Lincolnites of the highest type as their slogan they forever hold in mind:

"Give to old Lincoln the best you have and the best will she give to you."



Academy



FOURTH YEAR

Top Row

WILLIAM YOUNG
HELEN GALBREATH
ROBERT THOMAS
MARGEY FINLEY
PORTER DENSON
SUSIE KNOX

Bottom Row

ROOSEVELT WILSON
BERNICE RUTHERFORD
ROBERT TURNER
FLORINE ROBINSON
LEVETT HUNTER
THURMAN BEASON

Middle Row

ESTELLA ANDERSON
JIMMIE JAMES
MARY FLOURNOY
VIRGIL SHEPARD
EVA POSEY
G. SIMPSON



THIRD YEAR

Top Row

BAKER TURPIN
KATHERYN FOSTER
SAMUEL DUNCAN
MARGARET DARBY
EMMETT GILMORE

Middle Row

LIZZIE ANDERSON
NORMAN CALHOUN
GERTRUDE BYRD
ROBERT EDWARDS
NANNIE VANBUREN

Bottom Row

ALMA SMALLWOOD
BENJAMIN SMITH
GRACE ENGLISH



SECOND YEAR

DAVID TAYLOR
GRACE LAWTON
JAMES MERITT
CLIFFORD LOGAN
OPAL WILLIAMS
CHARLIE NICKELS



FIRST YEAR

Top Row

PAUL MATTHEWS
DOROTHIS CATLIN
RUFUS ROGERS
CLOTILD BOONE
JOHN WILLIAMS
LOIS WATERS

Bottom Row

MAGGIE HEMMINGWAY
AGNES MOORE
MR. A. HAMMONDS, Adv.
VIVIAN SIMMONS
HAZEL DOCKETT



LINCOLN UNIVERSITY TRAINING SCHOOL

THE University offers a Training School for the practice of its prospective teachers. It comprises work from the kindergarten to the eighth grade. The work of this school is under the direct supervision of Mrs. Ollivia Nolley, our critic teacher, assisted by Miss Grace Dorsey.



R.O. BERG

Athletics

Page 49

1930

"L" CLUB

THIS Club was organized in 1922 and consists of men winning the coveted varsity "L", standing for work done in football at Lincoln University.

This Club is honored with the presence of such men as Captain Wynn, the All-State star quarterback; Azzie Campbell, the ever-charging All-American fullback who forever plays a clean and sportsmanlike game.

Rogers, the invincible end, also is a member of this Club as well as Co-Captain Walls, the terrifying halfback. It is indeed an honor to have one's name upon the roll of the "L" Club and ever will their deeds be remembered in the hearts of all Lincolmites.

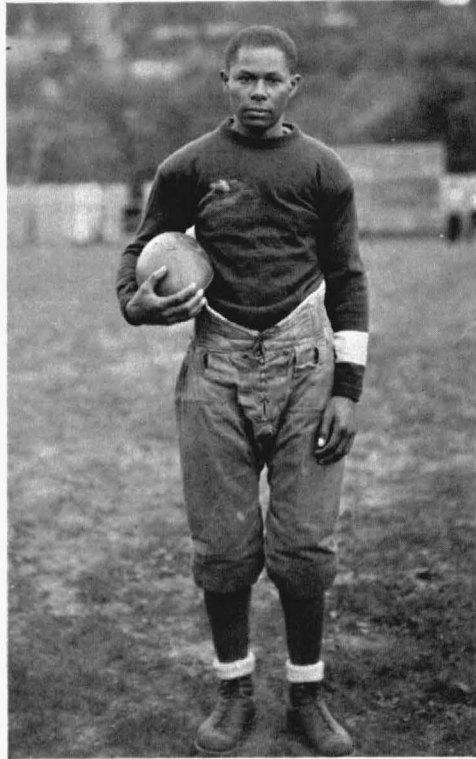
—EDITOR.

MEMBERS

AZZIE CAMPBELL
EDWARD SMITH
ROY LEE JOHNSON
WILLIE B. WALKER
RICHARD KELLEY
CHARLES BLACKSHEAR
WILLIAM WYNN
BERTRAND GREEN
BASIL NORTH
OSSIE HAMILTON
LEANDER ROGERS



FOOTBALL



THE 1929 football season at Lincoln University was indeed honored with the illustrious coaching of none other than our beloved coach, Waters. Mr. Waters hails from Lincoln University in Pennsylvania where he was an all-around athlete—a four-letter man.

Coach Waters' major sport was football on which team he was varsity quarterback for three years. It has been said that he was one of the best quarterbacks Lincoln has ever produced for some time to come.

On the baseball team he played center field and piloted his fellow players in 1918. Several times he saved the day for Lincoln by his brilliant generalship and good nature.

He was a varsity track man for four years and captain of his team in 1919. His special event was the two-mile and it has gone down in the history of "Ole Lincoln" that he is one of the best two-milers that Lincoln has ever produced.

In basket ball he was not so strong but contributed much to the team in the form of his moral support which was very instrumental in winning many of the games.

In 1922 he coached at Georgia State College and produced that year a championship team which was also runner-up in 1923.

In 1927 he was Athletic Director and football coach at North Carolina College in Durham, North Carolina. His team that year won the North Carolina Conference Championship.

In 1929 he turned out a football team at Lincoln University (Mo.) that was second to none. This team turned back the mighty Langston and made West Virginia set up and take notice.

Lincoln University's football team will forever grow if kept under the guidance of our most beloved coach—MR. DAVID WATERS.



LINCOLN UNIVERSITY'S VARSITY

First Row

R. KELLEY
E. SMITH
O. ROCQUEMORE
A. TURNER
B. NORTH
C. BLACKSHEAR
A. CAMPBELL (Capt.-elect)
E. WALLS
B. GREEN
L. ROGERS

Second Row

J. WATSON
O. HAMILTON
C. PARKER
F. LEWIS
R. ELLINGTON
W. CULP
R. JOHNSON
P. JOHNSON
C. SETTLES
L. WRIGHT

Third Row—

R. BENTON (Mgr.)
C. DECKER
E. MOORE
P. CASEY
C. HORNE
I. HOLMES
J. TURNER
D. WATERS (Coach)



CAPTAIN WYNN

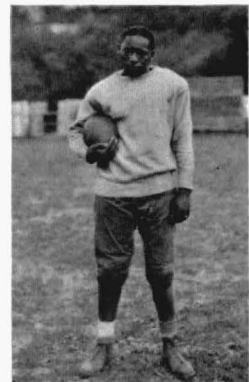
The All-State quarterback and three-letter man hailing from Columbia, Mo., who has contributed in a big way to the success of Lincoln University's football team.



Boosters' Club

CO-CAPTAIN WALLS

Mr. Samuel Walls hails from Liberty, Mo., and is one of Lincoln's most consistent players, playing well the position of halfback.



VARSIITY FOOTBALL

THE Lincoln squad emerged from its 1929 football season with two defeats. The squad has proven itself to be the best in the history of Lincoln University.

Late in September our coach arrived in the person of David Waters, former star quarterback of the Lincoln University (Pa.) football team, who began immediately in putting the invincible Tigers into shape. He was greeted by such men as Azzie Campbell, the 1929 All-American fullback and Captain-elect for 1930.

Sam Walls (co-captain), also greeted him as well as our little quarterback and Captain William (Billy) Wynn. "Baby" Green, the 225-lb. midget center was there and on the alert to keep the enemy out of forbidden territory.

Rocquemore, the 1928 All-American end with his spectacular playing, halted many a foe and made it possible for Lincoln to come out unblemished.

Turner, the elected co-captain of 1930, a tiny guard, also furnished bad atmosphere for the opponents by making their stay on the gridiron unpleasant.

This year we will lose, due to graduation, such veterans as Captain Wynn, "Dick" Kelley, Ed. Smith and that flashy end and brilliant player, Leander Rogers. This loss will be much felt and we are hoping that such men as Decker, Horne and Hamilton to well take their places. May their names go down in history to never be forgotten.

SUMMARY

Lincoln.....	36	St. Louis Reds.....	0
Lincoln.....	0	Fisk.....	13
Lincoln.....	64	Fort Riley.....	6
Lincoln.....	0	West Virginia.....	7
Lincoln.....	7	Langston.....	7
Lincoln.....	6	Western Univ.....	0



First row—WM. JOHNSON, GEORGE IRVIN, M. BROWN, K. DRAFFEN

Second row—D. TAYLOR, R. WILSON, T. JOHNSON, T. BEASON, E. HOLLINS (Capt.), P. MASON, W. JOHNSON, R. EDWARDS, F. RAIMEY

Third row—G. BROWN, P. BELL, W. YOUNG, J. MCKINNEY, A. MOORE, C. WRIGHT, F. HARDING, J. McCLANAHAN, L. SHEPHARD, S. DUNCAN, T. H. MILES (Coach)

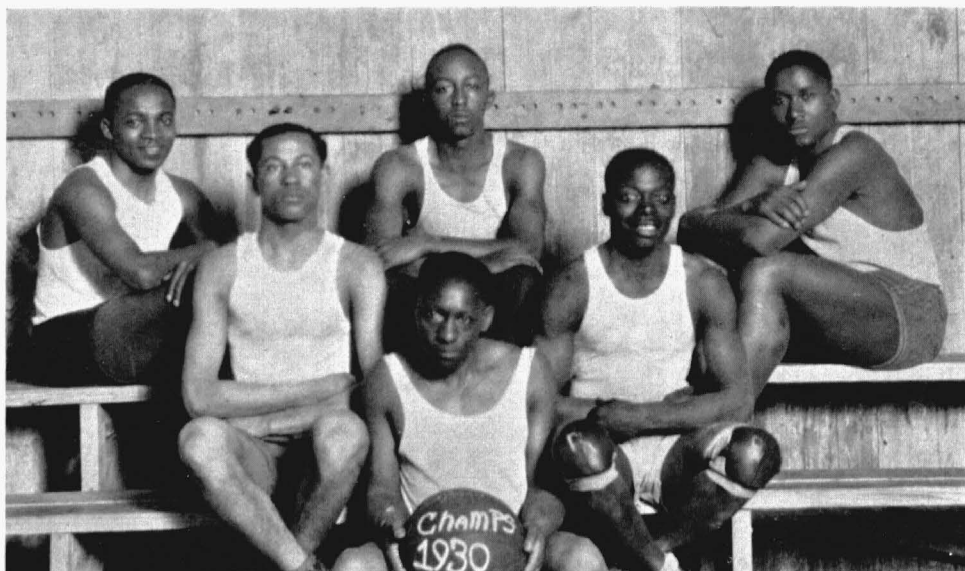
HIGH SCHOOL FOOTBALL

SUMMARY

Lincoln.....	39	Douglas (Lexington).....	6
Lincoln.....	31	Lincoln (Springfield).....	0
Lincoln.....	6	Sumner (St. Louis).....	13
Lincoln.....	0	Vashon (St. Louis).....	0
Lincoln.....	12	Douglas (Columbia).....	0

LINCOLN UNIVERSITY High School football squad came out of her many football struggles almost totally unvanquished. Defeated but once, by Sumner, as the above results show, Coach Miles kept his team ever in the football limelight.

BASKET BALL



L. U. CHAMPIONS

W. B. WALKER, TOLLIE ELLIOTT, TED BROWN, R. BENTON, B. NORTH
SAM WALLS (Capt.)

L. U. COLLEGE ALL-STARS

TED BROWN CARL CONNER
R. L. JOHNSON R. ELLINGTON (Capt.) W. DOUGLASS





COLLEGE GIRLS

Back row—I. WATSON, D. WYATT, L. LESLIE, O. WOODS

Front row—S. TERRY, S. HUBBLE (Capt.), JETTIE SMITH

HIGH SCHOOL

W. JENNINGS WM. YOUNG T. BEASON
A. MOORE (Capt.) F. HARDING



RESULTS OF THE INTRAMURAL MEETS

Juniors.....	14	Seniors.....	4
Juniors.....	13	Freshmen.....	10
Juniors.....	12	Sophomores.....	10
Juniors.....	20	Fourth year.....	19
Fourth year.....	27	Third year.....	15
Fourth year.....	35	Second year.....	9
Fourth year.....	37	First year.....	11

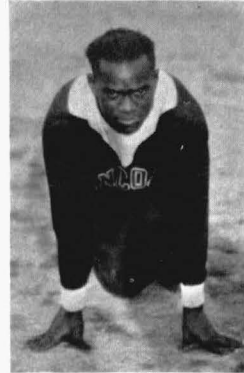
The Juniors were crowned champions of the University as well as the College. The fourth year were crowned champions of the High School but met their superiors in the Juniors.

TRACK--BASEBALL

TRACK AT LINCOLN UNIVERSITY

1930 SCHEDULE

- March 7—Trial races at Westminster College, Fulton, Mo.
- March 15—University of Illinois Relay Carnival, Urbana.
- March 22—Western A. A. U. Meet at St. Louis.
- April 26—Interclass Track and Field Meet, Jefferson City, Mo.
- May 3—Middle-Western Track and Field Championships at Lincoln University.



THE 1930 Lincoln University Track Team completed a good if not brilliant year on the cinder path. The college team placed third at Western A. A. U. meet at St. Louis and won the open events at the first annual Middle-Western track and field meet. The high school had a well-balanced squad and won the annual interclass meet by a good margin and placed fifth in the Middle-Western Interscholastic Track Meet with ten strong teams competing.

Co-Captain Leander Rogers brought to a close his very brilliant career on the track by a noteworthy invasion of the Illinois Relays, starring at Western A. A. U. meet at St. Louis and winning the open pentathlon trophy at Middle-Western Track Meet. His matchless finishing drive, his great speed, his iron stamina and his wonderful fighting spirit mark him as the greatest track man in the history of the school. In passing tribute we may say he was a gentleman, a scholar and an athlete. Nuff sed!

Other members of the squad who did outstanding work were Syl Chambers, who placed third in 300 at Wes. A. A. U. Meet; Bill Johnson, who won the javelin in the Middle-Western Track Meet; Ted Johnson, who placed second in the events at the Middle-Western Meet; Rube Benton, sprinter who beat Rogers twice this year in the fifty; Ben Smith, who shows promise as a pole vaulter; Ellis Moore, who cleared over 22 feet in the broad jump; Wilson, who placed fourth in the 220 at Middle-Western Meet; Sam Duncan, quarter-mile star; and Dave Taylor, Kirksville youth who showed good ability in the pole vault, 220, 440 and hurdles.

Co-Captain Emmett Walls, veteran sprint star, had an off year caused by ill health. High blood pressure caused the medics to order the big sprinter to forsake the cinders, but he gave his all for his team. Walls placed second to Rogers in the pentathlon at Middle-Western Meet. At one time Walls was one of the fastest 50-yard men in the country, numbering among his victims, Loren Murchison. Walls will be back again next Spring and hopes to pull a "come-back."



J. D. PARKS (Coach), F. LEWIS, G. LANSDOWN, CALHOUN, D. TAYLOR, R. BENTON, L. ROGERS, E. WALLS, S. CHAMBERS, SMITH, E. MOORE, S. DUNCAN, J. BOYD (Mgr.)

VARSITY TRACK TEAM

RECORDS

ROGERS.....	100-yd. dash.....	9.8 sec.
WALLS.....	100-yd. dash.....	9.8 sec.
ROGERS.....	50-yd dash.....	5.6 sec.
ROGERS.....	300-yd. dash.....	37.4 sec.
E. MOORE.....	Broad jump.....	22 ft. 1 in.
EDWARDS.....	Pole vault.....	10 ft. 6 in.
WALLS.....	Shot put.....	39 ft. 11 in.

BASEBALL



CAPTAIN SHROPSHIRE

INTRAMURAL MEETS

April 26—Freshmen-Juniors vs. Sophomore-Seniors.

April 30—Freshmen-Juniors vs. Faculty.

May 7—2nd and 4th-year vs. 1st and 3rd-year.

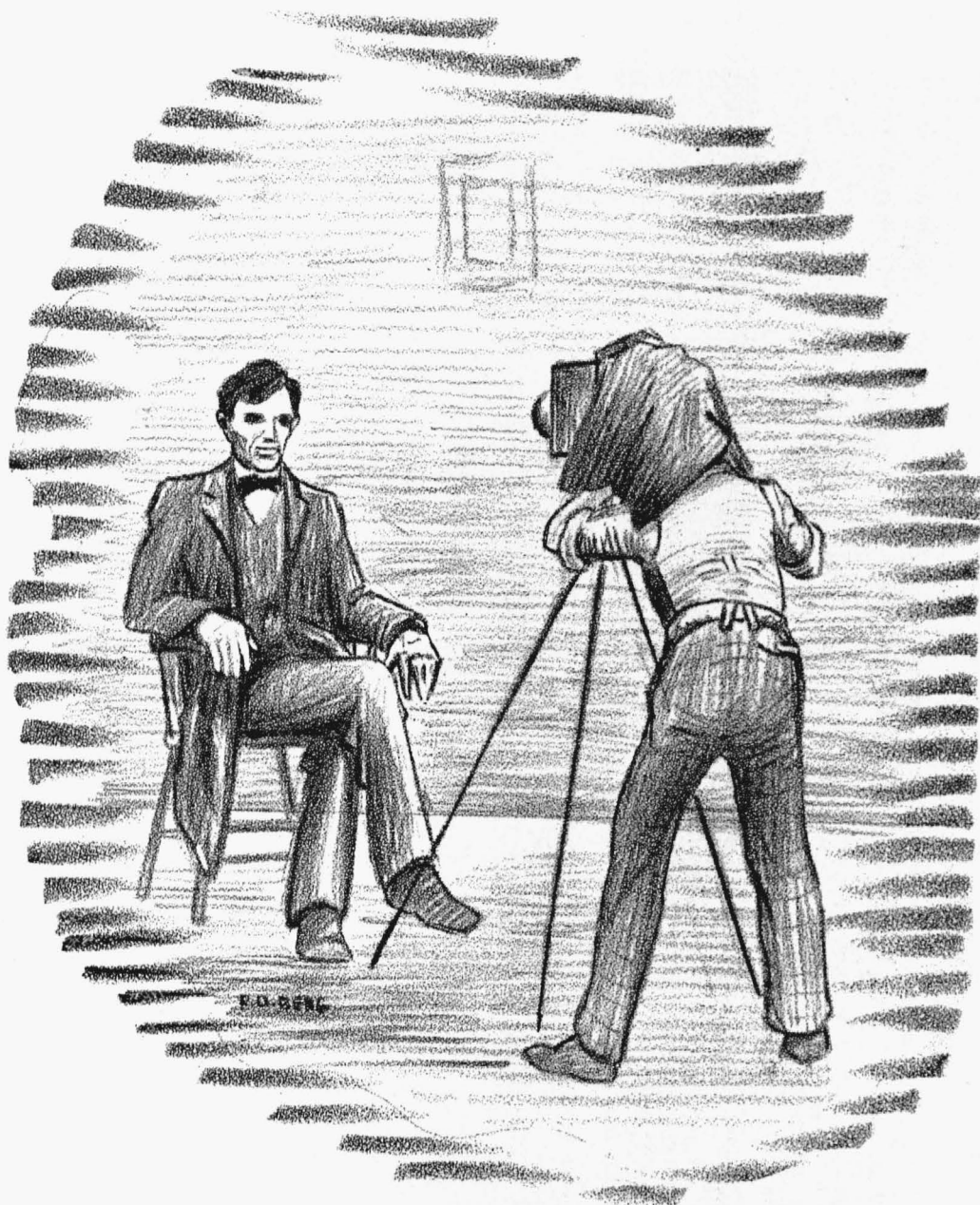
May 14—Freshmen-Juniors vs. 1st and 3rd-year.

PLAYERS

First row—R. SHROPSHIRE, E. WARREN, F. YOUNG, C. BLACKSHEAR, A. SHROPSHIRE, R. FARR

Second row—F. RAIMEY, E. BRODIE, V. JEWELL, E. HOLLINS, J. BOYD, J. TURNER, COACH WATERS



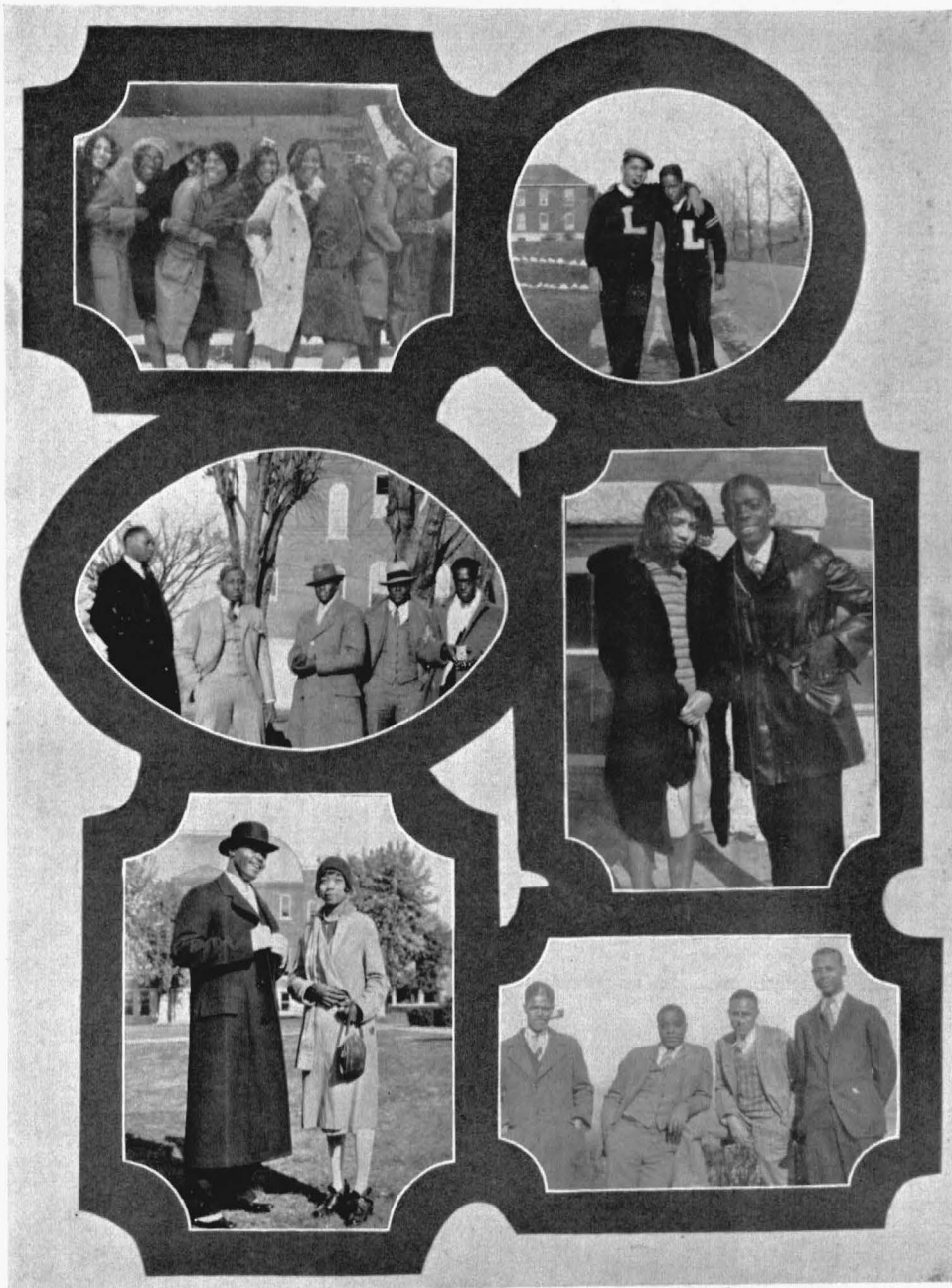


Snaps

Page 65

1930





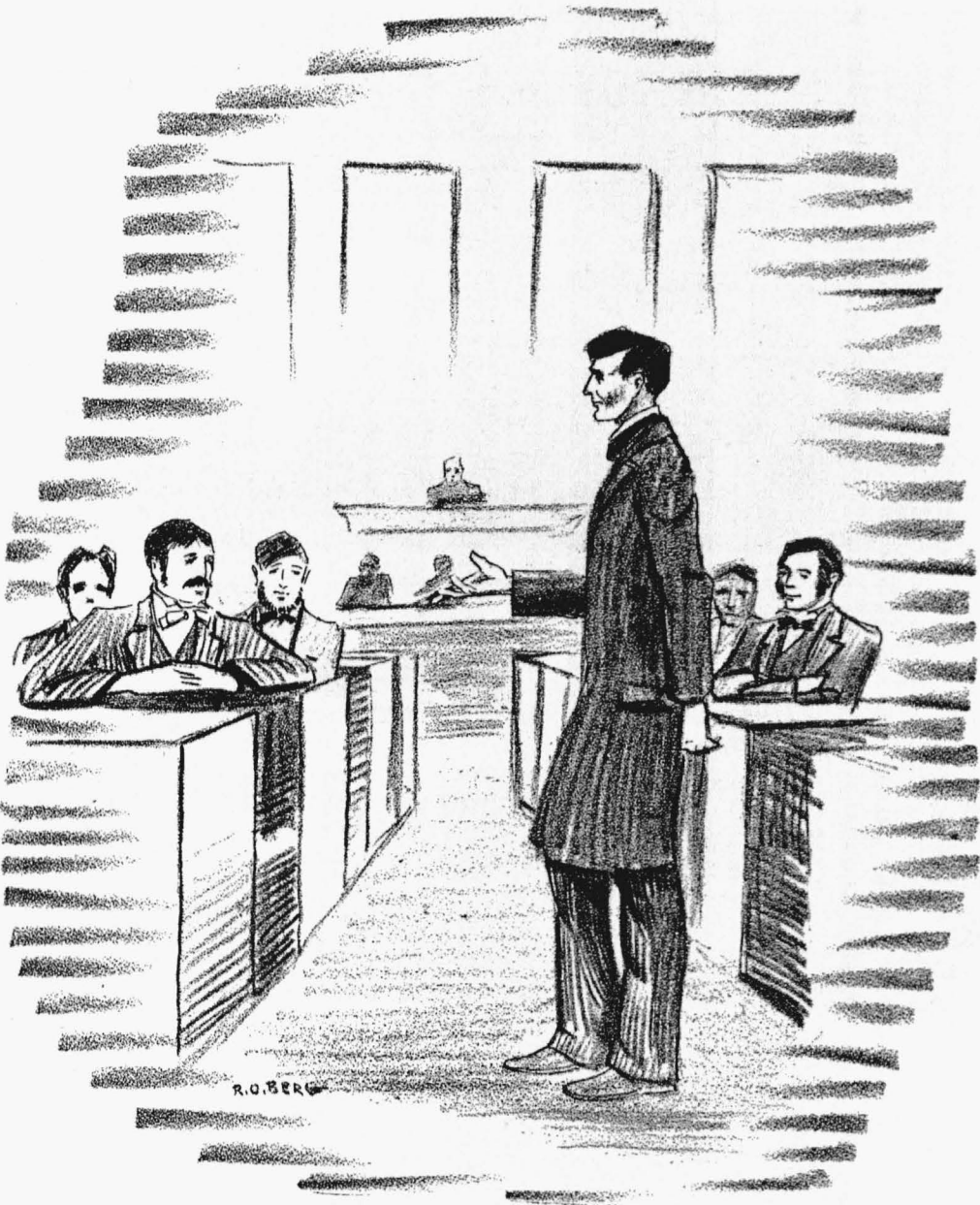


CALENDAR

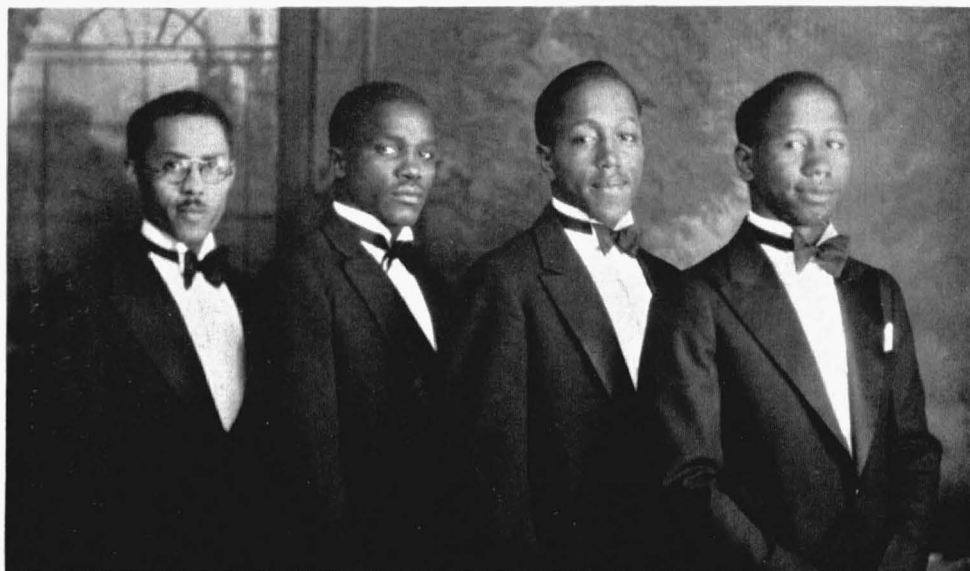
- Sept. 9—Freshmen look the campus over.
 Sept. 10—Socrates quits Organic Chemistry.
 Sept. 11—Class work begins.
 Sept. 12—Socrates quits Qualitative Analysis.
 Sept. 15—Junior and Senior men looking the campus over.
 Sept. 16—Football season opens.
 Sept. 17—Everyone looking for Coach Waters.
 Sept. 18—Girls elect Benton Business Manager.
 Sept. 19—Hill tries to stop the "Maxwell."
 Sept. 20—Introductory Social.
 Sept. 21—Privileges to movies.
 Sept. 28—Football men have privileges to movies.
 Sept. 28—Lincoln downed St. Louis Reds—33-0.
 Sept. 29—Turner defeated Hill.
 Oct. 1—Van Buren leaves home (M. W.)
 Oct. 2—Phelps goes back.
 Oct. 4—Phelps stops Turner.
 Oct. 5—Lincoln lost to Fisk, 13-0.
 Oct. 7—Some of football men lose their regular positions.
 Oct. 8—Boys impeach Benton.
 Oct. 18—"Sophs" entertain Seniors.
 Oct. 19—Clymer is gaining his strength by talking to C. M.
 Oct. 26—Lincoln defeated Ft. Riley, 63-0.
 Oct. 27—L. Rogers looking for breaks, Oh, well; trying to body-block Johnson.
 Oct. 31—The Big Three: Hamilton, S. Walls, and Elliott hold meeting. Elliott was elected President. Ask Emmett Walls.
 Nov. 2—Nearly everyone went to St. Louis except Eden and Elliott.
 Nov. 2—Lincoln lost to W. Virginia, 7-0.
 Nov. 2—Elliott relieves Mr. E. W. of his heavy load.
 Nov. 6—Hadley gets quit on account of M. F.
 Nov. 7—Hack Wilson threatens to punish Dusty Cook (R. F.)
 Nov. 10—Mr. Hartshorn is looking for a mate.
 Nov. 12—Mr. Buch Eden is still loafing in the halls.
 Nov. 16—Doris Lee captures A. V. Turner—getting ready for Thanksgiving.
 Nov. 19—Langston and Lincoln game, 7-7.
 Nov. 20—Coach Waters introduces his loud speaker by trying to drill something into Ellis Moore.
 Nov. 26—Everyone getting ready to go to K. C.
 Nov. 28—Lincoln won from Western University, 6-0.
 Nov. 28—T. Elliott after thinking it over.
 Nov. 28—"Zek" gets married.
 Dec. 2—"Shrop," I feel sorry for you because "Zek" married—just hard luck.
 Dec. 3—Teachers starting their "before-holiday" drive.
 Dec. 5—R. Benton is still President of the "Max" Sweney Club.
 Dec. 6—Freshman and Sophomore game.
 Dec. 8—Tough breaks in dining room—nothing to eat but beans.
 Dec. 10—Shrop gets the word. (Some say absence makes the heart grow fonder—ask Shrop.)
 Dec. 11—Reuben breaks the record by staying in school until the eleventh of Dec. this year.
 Dec. 12—Two in class—Mr. Kildare lectures, and Brewer sleeps.
 Dec. 13—The end of the day—King and Shade.
 Dec. 13—Friday. Pi Sigma Gamma and Delta Alpha Phi pre-holiday prom.
 Dec. 13—Shade and Shropshire (Wilhelmina sings "Am I Blue" to Shrop—Catherine sings "Miss You").
 Dec. 14—Le Beau Brummel social.
 Dec. 15—It won't be long now—Reuben is leaving—the noise in Foster Hall will stop.
 Dec. 18—Strickland breaks glasses.
 Dec. 19—Holidays begin. Everyone leaves.
 Dec. 20—Everyone goes home for Xmas but Loree Leslie—can't leave Charlie.
 Jan. 1—Big Ham and Little Ham make a resolution—ask them.
 Jan. 2—School begins.
 Jan. 4—F. R. saves a seat in the show for E. E.—but oh that town girl!
 Jan. 5—A. Campbell can't leave K. C.
 Jan. 6—Misses Madden and Shade decided to come back to school.
 Jan. 10—Mr. M. Beason is beginning to smile.
 Jan. 13—H. Pearley gets news about the town girl.
 Jan. 17—Great snowstorm.
 Jan. 20—Mr. Savage is saying "Bring me my stuff."
 Jan. 22—Exams.
 Jan. 24—Exams over: Zero hour (Louise lectures to Mr. Kildare).
 Jan. 27—Students trying to get along with "I. C."
 Jan. 27—College registers. Some say goodbye.
 Jan. 28—Miss Tilford is back.
 Jan. 29—High School registers.

CALENDAR—Cont'd

- Jan. 29—Class work begins.
 Feb. 1—Virgie and Vi resort to High School boys.
 Feb. 1—Rogers is looking the St. Louis stock over. "Look out, Mack."
 Feb. 2—V. Ward calls R. K. R. K. loses \$10.
 Feb. 4—Fisk Jubilee Singers give a recital.
 Feb. 8—Buck trying to get a break with home girls.
 Feb. 13—Black cat crosses Rocquemore's path—must be a train.
 Feb. 18—Grace Williams halts for downs, Little Bit running.
 Feb. 19—Buck confidences Elizabeth Sandford.
 Feb. 20—Mr. A. V. Turner takes a "ride."
 Feb. 22—Rocquemore is back—but on his way home.
 Feb. 25—Valley Forge—P. Turner's winter quarters broken by "Nathan."
 Feb. 26—Opal refuses to wear the "L" sweater.
 Feb. 27—Louise Ray and Jelly Ramey are seen together frequently.
 Mar. 1—Vanished for three days (he is married) B. G.
 Mar. 1—Boys' reception room open all nite.
 Mar. 1—B. North buys a cheesecloth suit, a razor and an umbrella.
 Mar. 2—Mr. O. Hamilton attends chapel for first time.
 Mar. 2—Prof. Barnes masters dominoes.
 Mar. 8—Roy Johnson gets high.
 Mar. 9—Pat steps out in Tuxedo.
 Mar. 9—Gracey spends the night out.
 Mar. 13—McCraty blew up the chemistry lecture room.
 Mar. 13—F. R., L. R., E. S., H. P., seen in action on basket ball court.
 Mar. 14—President issues men proclamation—Hobo Day.
 Mar. 15—Mr. Kildare and Blue win the candy.
 Mar. 16—Le Beau Brummel Anniversary week begins.
 Mar. 17—Sign in Foster Hall: Men Wanted.
 Mar. 18—Stately and tall he walks in the hall with (L. B.)
 Mar. 18—Sam Walls is still studying astronomy—no grades.
 Mar. 28—Minstrel given by ——— Club.
 Mar. 29—Some* members of the Faculty peevied because R. B., V. M., C. P., and others portrayed them so well.
 Mar. 29—College party.
 April 5—High school party.
 April 11—The Dramatic Art Club presents the "Third Day."
 April 12—The Patronesses entertain the A. K. A. and guests.
 April 18—Stunt Show.
 April 24—Operetta—The "Marriage of Nannette."
 April 25—Spring Prom given by College Clubs at State Park. Whoopee and How!
 April 26—The Interclassic baseball series starts. The Sophs and Seniors play the Frosh and Juniors.
 May 2—College party.
 May 10—Junior and Senior Prom (High School).
 May 11—Mother's Day Program—Club.
 May 16—Junior and Senior Prom (College).
 May 23—High School Commencement Play.
 May 31—High School Commencement Exercises.
 June 1—Baccalaureate Sermon.
 June 3—Alumni Banquet.
 June 5—The Gangs get together for the last time—H. H. H., A. C. S., W. L. W.
 June 6—Commencement. Some say goodbye for a few days, some for the summer, and some forever.
 Seniors Sing:
 School House Blues
 School House Blues
 Tired of reading History
 Don't care for Astronomy
 We are oh so sick of Biology and Economics
 That is why we're giving the teachers the rack
 And we hope some day to come back—
 If they don't like it they can sit on a tack,
 School House Blues
 We have those School House Blues.



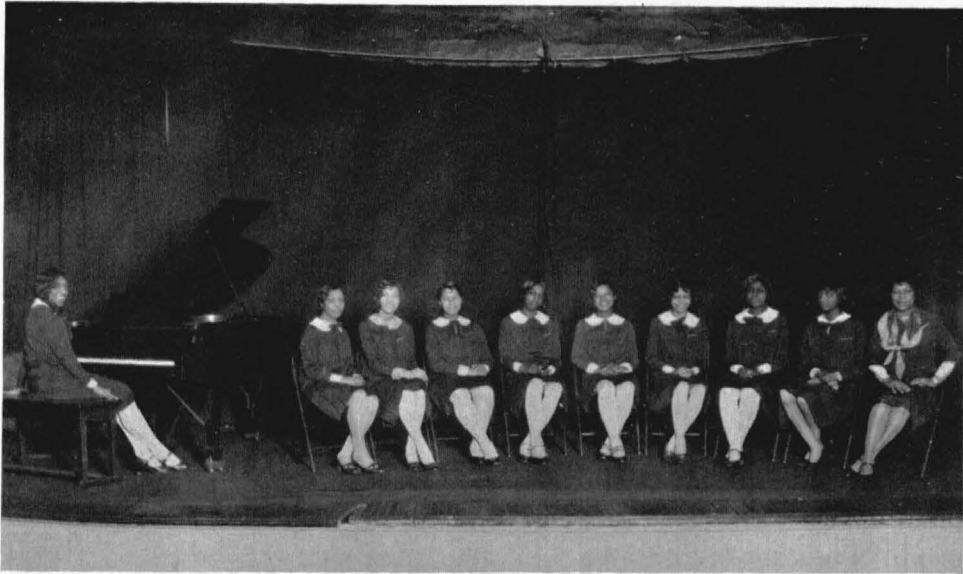
Activities



Left to right—B. GRAVETTE, E. MOORE, J. SMITH, K. SMITH

MALE QUARTET

Lincoln, O Lincoln,
We thy proud children are;
Thou art our guiding star.
Lincoln, believe
Our's are that yearn for thee;
No matter where we be,
Morning, Noon and always we
Are Lincolmites.



MEMBERS

Left to right—ELIZABETH COBB (Accompanist), MARINDA FERGUSON, RUTH REDD, PORTIA POWERS, ANNA MAE JACKSON, FRANCES RANDALL, WILHELMINA HARRISON, MARY LOUISE RAY, SAMUELLA TERRY, MISS ROENA MUCKELROY (Directress)

MELODY MAIDS

“ALL growth is through self-expression, and the exalted moods that make life significant are uttered in music, especially in vocal music which supplies the word that gives it concrete direction as a character influence.” This group of young women, under the able direction of Miss Roena Muckelroy, has done much to spread this doctrine on the campus, and in the neighboring cities. They have appeared in recital several times during the year, and have filled a number of engagements in joint recitals with the young men’s glee club, namely in St. Louis, at Columbia, Fulton and other places.



CHORUS

THE Lincoln University Choral Club, under the leadership of Miss Roena Muckelroy and Miss Marie Ford, has been a great link in the University musical chain this year. Many interesting and enjoyable programs have been given, the most outstanding one being the operetta "The Marriage of Nannette," presented in Page Auditorium, April 24, 1930. The singing in Sunday Convocation has carried joy and pleasure to many.

—M. L. RAY, '30.



LINCOLN UNIVERSITY ORCHESTRA

THE Orchestra has made wonderful progress this year under the direction of Mr. Maceo Williams.

The Orchestra won much praise this year by playing in the Auditorium during the Show Hour and at Convocation services. The organization also sponsored two concerts in Kansas City, Missouri, on Thanksgiving Day. Creditable showings were made by the presentment of concerts, open to the general public on the "Hill."

—MACEO WILLIAMS, *Director.*



Class in Art

Dance of the Nymphs





Y. W. C. A.

OFFICERS

President
Secretary

CLEMENTINE SEXTON
WILHELMINA HARRISON

Treasurer
Advisor

FANNIE TOLSON
MRS. JULIA MORRISON

JONES' BIOLOGY CLUB

Top row—W. DOWDY (Advisor), F. SIMNS, M. L. RAY, A. KING, R. GRACEY

Bottom row—O. NOEL, C. STRICKLAND, E. SANFORD, B. V. PHELPS, A. SHROPSHIRE, W. WYNN





*First row (left to right)—H. HARTSHORN, W. WYNN, A. SHROPSHIRE, M. BEASON
Second row—A. KING, C. BLACKSHEAR, H. DIXON, R. SMITH, R. REID
Third row—M. FINLEY, W. WALKER, W. HOPSON, F. LEWIS, W. DOUGLASS*

DELTA ALPHA PHI

FOUNDED at Lincoln University (Mo.) November 1, 1923, with the purpose of developing scholarship and manhood upon the campus. It has as its distinct motto:

"Give to the World a Man."

OFFICERS

<i>President</i>	H. HARTSHORN
<i>Vice-President</i>	W. WYNN
<i>Secretary</i>	A. SHROPSHIRE
<i>Treasurer</i>	M. BEASON
<i>Judge of Court</i>	N. FREEMAN
<i>Advisor</i>	MISS R. MUCKELROY
<i>Advisor</i>	MR. N. P. BARKSDALE



Top row (left to right)—A. CAMPBELL, J. BARNES, T. ELLIOT, R. KELLEY, F. SIMMS, C. STRICKLAND
 Middle row—C. CONNOR, L. ROGERS, W. EPPS, B. F. KING, V. P. PHELPS, R. L. JOHNSON
 Bottom row—E. SMITH, B. GREEN, B. NORTH, J. ASHFORD, E. PEPSICO, C. BLUE

LE BEAU BRUMMEL

OFFICERS

A. L. CAMPBELL	<i>President</i>
J. BARNES	<i>Vice-President</i>
T. ELLIOT	<i>Secretary</i>
R. KELLEY	<i>Treasurer</i>
F. SIMMS	<i>Sergeant-at-Arms</i>
E. V. PEPSICO	<i>Advisor</i>
C. A. BLUE	<i>Advisor</i>

L E BEAU BRUMMEL was founded at Lincoln University March 21, 1920, and is the oldest young men's club at the University. The Club is a distinct college club organized for the purpose of promoting good fellowship and keeping the spirit of social activity ever alive on the campus. This year the Club recognized its tenth birthday and the week of March the sixteenth was set aside as its anniversary week.



First row (left to right)—V. KING (Basileus), VIRGIE GREEN (Dean of Ivy Leaf), E. SHADE (Sec.), E. PEPSICO (Adv.), J. BRASSFIELD (Adv.), M. LIVINGSTON (Adv.)

Second row—G. WILLIAMS (Hadgogeos), S. HUBBLE, L. LESLIE, H. MILLER, O. NOEL, G. TILFORD

Third row—V. WARD, R. BURTON, H. PARSONS, E. COBB, R. REDD, E. TAYLOR

ALPHA KAPPA ALPHA

Founded, Howard University, January 16, 1908.

Established, Lincoln University, February 13, 1930.

Sorority Colors: Apple Green, Salmon Pink.

Sorority Flower: Sunburst Rose.



Top row (left to right)—O. HAMILTON, S. WALLS, R. BENTON, R. HILL, A. Y. LANSDOWN
 Middle row—E. WARREN, G. LANSDOWN, J. BOYD, C. PATTERSON, T. STALLWORTH
 Bottom row—W. JENNINGS, L. JOHNSON, R. GRACEY, V. MOORE, W. BERRY

GAMMA PSI EPSILON CLUB

OFFICERS

O. H. HAMILTON	President
JAMES R. BENTON	Vice-President
WILBERT BERRY	Secretary
LEO JOHNSON	Treasurer
F. YOUNG	Business Manager
A. Y. LANSDOWN	Assistant Business Manager
C. PATTERSON	Chaplain
S. WALLS	Sergeant-at-Arms

THE Gamma Psi Epsilon Club was organized at Lincoln University in February, 1929. The aim of the Club is to create an interest in the campus problems; to stimulate and to improve the moral conditions of the students in and around the University. The Club motto is: "Continue Your Education."



Top row (left to right)—F. RANDAL, C. PATTERSON, H. MILLER, W. DOUGLAS, C. SEXTON, E. SHADE
Middle row—P. POWERS, M. BEASON, H. PEARLEY, W. HARRISON, M. FERGUSON, L. LESLIE
Bottom row—V. MOORE, L. HILL, E. ROSS, S. SAVAGE, C. BLACKSHEAR

HISTORY CLUB

THE History Club is composed of students interested in History. The purpose of the Club is to give students a broader knowledge of History than can be obtained in the classroom. The Club is open to all students who have at least six (6) hours in History.

OFFICERS

FRANCIS RANDAL	President
ELIZABETH ROSS	Vice-President
HORTENSE MILLER	Secretary
CLEMENTINE SEXTON	Treasurer
HENRIETTA PEARLEY	Chairman of Program Committee
MR. W. SHERMAN SAVAGE	Advisor



Top row (left to right)—T. ELLIOTT, M. L. RAY (Pres.), J. BARNES, S. HUBBLE, W. LONIAN, E. JONES
Bottom row—L. ROGERS, B. F. KING, L. MILLER, S. DAVIS, W. JASON (Adv.), M. THOMAS

MATHEMATICS CLUB

THE Mathematics Club was organized under the supervision of Mr. W. B. Jason with the purpose of broadening the knowledge of the students and to acquaint them with some phases of mathematics that would not be discussed in the classroom. The Club is composed of students interested in and having a minimum of six (6) hours in Mathematics.

OFFICERS

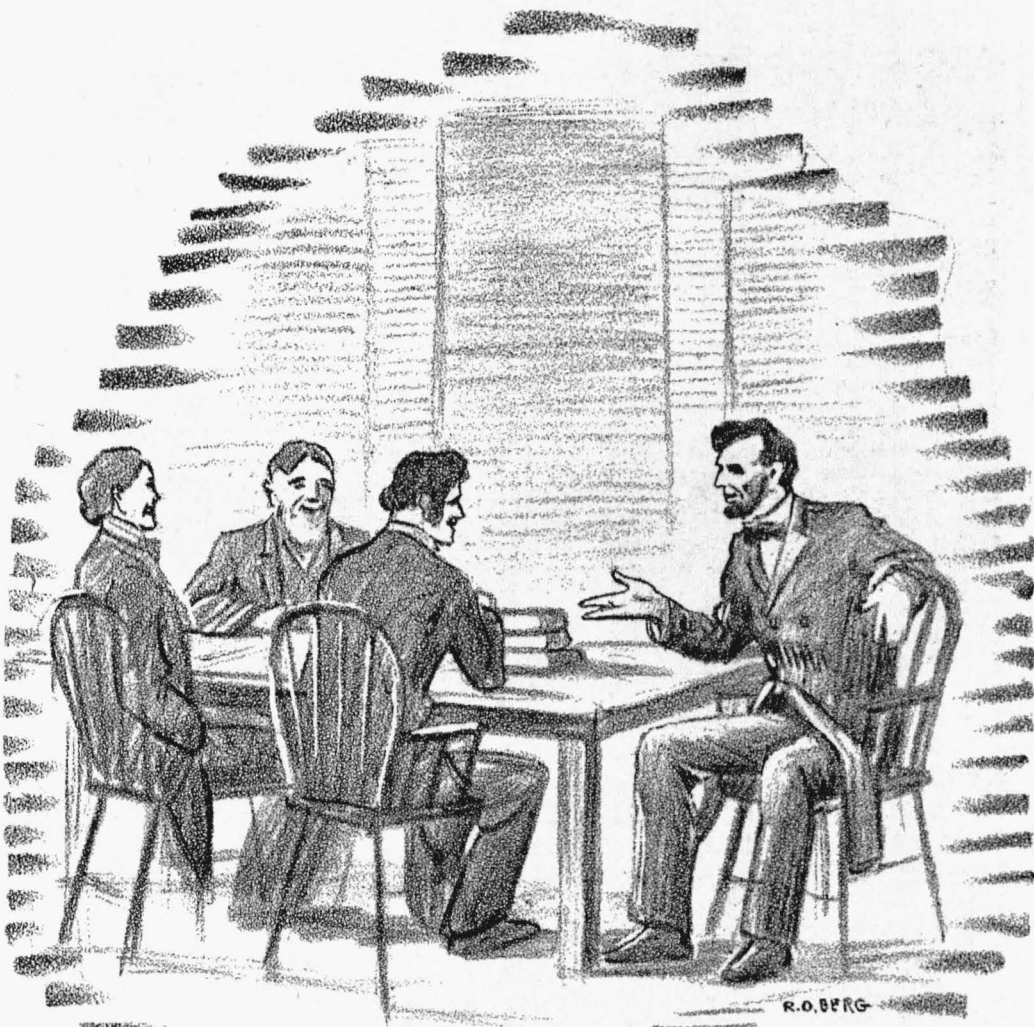
MARY LOUISE RAY	President
LEANDER ROGERS	Vice-President
LOUISE THORNTON	Secretary
SARAH HUBBLE	Treasurer



Biology Class

Room in Foster Hall





Humor

HUMOR

By JAMES R. BENTON, '31

A woman needs a chaperon until she calls some chap her own.

Earl: "I've changed my mind."
Sam: "Well, does it work any better?"

Bird Dog: "There's a wedding at the chapel this morning."
Buck: "Compulsory?"

Laura: "The professor has made me his private secretary, do you think I'll get an advance?"
Belle: "Lots of them, dearie, lots of them."

The college man does not have to look at the world through rose-colored glasses—his eyes are already bloodshot.—B. J.

Squirt: "Ah, my dear one, let me clutch you madly; let me press my burning lips to yours; let me—uh—let me—uh—"
Ruth: "Oh, Hadley, now you've forgotten your lines."—C. P.

Mel: "Gee, John, that candy in the window makes my mouth water."
John: "Well, here is a blotter."

Gamma: "So long, see you in hell."
Delta: "Yeah, you social climber."—P. P. B.

Roba: "Have a cigar?"
Farr: "No thanks, I have eaten."

A. K. A.: "Sure got hair on his chest."
D. S. T.: "Who?"
A. K. A.: "Mrs. Slater's dog."

There was the absent-minded professor who had the students to write the exam questions while he answered them.

Walker: "How can you keep yourself warm at night?"
Benton: "Reach for a blanket instead of a sheet."

Yates: "You say Professor Nutty is self-conscious?"
Hall: "Yeah, he can't even look a pretty co-ed in the knees."

Hadley: "Say, Kat, why is it I hear more of A. K. A. Sorority around here than I do of ΔΣΘ Sorority?"
Katheryn Frost: "That's because you've never been anywhere but in Missouri."

"HE WHISPERED SWEET NOTHINGS IN HER EAR"

He: O O O O?
She (nodding): O.
He (anxiously): O O O?
She (shaking her head): O O.
He (with relief): O.
She (laughing): O-O-O-O-O!
He (putting his arm around her): O O O O,
O O: O O?
She (slapping his face): O!
He (smothering her with kisses): O O?
She: Because I'm not that kind of a girl.
He (disgusted): O.
(Puts his hat on and walks out.)

Lizzie: "What do you say to a little kiss?"
Aurelia: "I've never spoken to one."

Opal: "If you kiss me again I'll scream."
Silence—
Beef: "Well, say something."
Opal: "Don't interrupt me. I'm screaming."

CORRIDOR ECHOES

By WM. B. WALKER

Dean: "Why did you kiss that young lady in that dark corner last night?"

Stude: "Now that I have seen her in the light, I sorta wonder myself."

Physics Inst.: "What's your trouble, young man?"

Joe: "I don't agree with that proposition."

P. I.: "Well, just watch the circle and I'll go through it for you."

"LOST—A fountain pen by a young lady half full of ink."

Son: "Papa, what do you call a man—well, who runs an auto?"

Father: "That depends on how near he comes to running over me."

WONDERS

Wonder:
Who killed the Dead Sea?
At whom does the ocean wave?
Who put salt in the Salt Sea?
Who painted the sky?
When is tomorrow?
How long is a second?
How many turns in a corner?
How many steps from Yates Hall to Foster Hall?
Does a wireless telephone have wires?
How high is up, how far is down, how wide is across, and how near is backward?

THE LIFE OF A BELLBOY IN DECEMBER

By WM. B. WALKER

BELLS BELLS BELLS

5:00—Alarm clock goes off.
 5:15—Gets up and gets dressed.
 5:29—Rush out doors, into a six-foot bank of snow.
 5:30—1st bell. Dark as night—wonder if it is too early.
 5:31—Just waking up good.
 5:45—Washing up.
 5:50—Making up bed—would like to get back in it.
 6:00—2nd bell. Still dark and still snowing.
 6:15—Student: "What bell was that?"
 —B. B.: "The one next to the last one."
 6:29—Student: "Going to ring the breakfast bell, Walk?"
 B. B.: "No. You have lots of time."
 6:30—3rd bell. All rush out for breakfast.
 7:50—4th bell. First class bell.
 7:55—5th bell. Student: "What bell was that?"
 B. B.: "I really don't know."

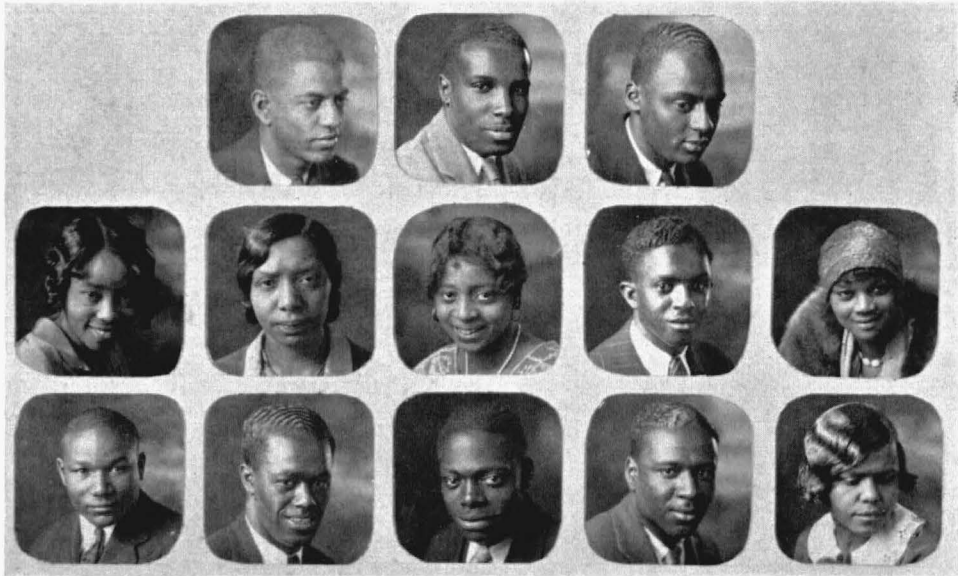
12:14—6th bell. Student: "What are you waiting on? I'm hungry."
 12:15—7th bell. Student: "Now you're talking so someone can hear you."
 12:50—8th bell. Chapel. Student: "Are we having chapel today?"
 B. B.: "I don't know."
 12:55—9th bell. Student: "That was the last bell, wasn't it?"
 B. B.: "Yes, you're right for once."
 5:30—10th bell. Student: "Was that the 5:30 bell you just rang?"
 B. B.: "I'm not positive."
 5:59—Student: "All right Walk, let's go—the town clock is striking now."
 6:00—11th bell. Students have already gathered around the entrance to dining room.
 7:30—12th bell. Things are just beginning to quiet down.
 10:00—13th bell. Of course it had to turn all the way over—however all lights must go out.
 5:30—1st bell. B. B. ready to start all over.

A LOWERCLASSMEN'S SCHEDULE

By WM. B. WALKER

5:30—Jumps out of bed. "Gee—thought I had missed breakfast."
 6:00—"Well, guess I'll get up."
 6:29—"Think I ought to get up."
 6:30—Breakfast bell. Up at last.
 6:40—Has to hurry. Forgets to put on collar and tie.
 6:45—Breakfast table: "Pass the swaggage, will you?"
 7:00—"I feel like going back to bed."
 7:30—Dreaming about "Charles I."
 8:00—Class time. Still asleep.
 8:30—"Well, guess I'll get dressed."
 9:00—Second period. "Wonder if I'll be late?"
 9:05—Late! Locked out.
 9:30—"Lost," all books on way to class.
 10:00—Study—upstairs to Library.
 10:30—Asleep.
 11:00—French—"What do I need with this stuff?"
 11:30—More Home Work—"Can you imagine that?"
 12:00—"I wonder why that bell don't ring?"

12:01—"The last bell has rung, Mr. B."
 12:15—Dinner bell. On time.
 12:30—"They must have cleaned out the ice box today."
 1:00—Chapel. Who's going to speak?"
 1:30—"I didn't think much of that talk."
 2:30—To study or Gym? One's just as bad as the other."
 3:30—Chemistry—Can't feel worse.
 4:30—Free. "Oh Boy!"
 5:30—"Is that the supper bell?"
 6:00—Supper bell. On time.
 6:30—They had too much for supper as usual."
 7:00—"Let me see. What shall I study for tomorrow?"
 7:30—Playing cards.
 8:00—Goes to Library.
 8:30—Can't find Cambridge's Modern History.
 9:00—"Did you ever see such a long reference?"
 9:30—In bed. Well, it wasn't such a bad day after all.
 5:30—Next morning. Begins all over again.



Top row—H. HARTSHORN, B. WYNN, J. BARNES
Middle row—H. PEARLEY, M. FERGUSON, G. SMITH, F. SIMMS, L. HILL
Bottom row—A. CAMPBELL, E. SMITH, R. BENTON, A. SHROPSHIRE, M. L. RAY

QUILL STAFF

H. HARTSHORN	Editor-in-Chief
E. WALLS	Assistant Editor
W. WYNN	Business Manager
A. CAMPBELL	Ass't Business Manager
R. FARR	Advertising Manager
J. BARNES	Circulation Manager
A. SHROPSHIRE	Photographs
L. HILL	Society
H. PEARLEY	Alumni
G. SMITH	Art
M. FERGUSON	Accountant
E. SMITH	Calendar
R. BENTON	Humor
A. MUSE	Secretary
R. ALLEN	Literary
L. RAY	Music
L. ROGERS	Sports
W. HARRISON	Typist
N. P. BARKSDALE	Faculty Advisor



"Ads"

BUTTER TOP BREAD

Tops 'em All

Capital Bakery

620 E. HIGH ST.

PHONE 660

RAITHEL BROS.

Dealers in all kinds of

HOME-KILLED MEATS AND
SAUSAGES, FISH, OYSTERS,
AND DRESSED POULTRY,
HOME SUGAR - CURED
BACON AND HAMS

PHONES 108-109

221 E. HIGH

Ed. Unwin

DEALER IN

HARDWARE, TINWARE, STOVES
AND RANGES, CUTLERY, Etc.

*Builders' Hardware a
Specialty*

112 E. HIGH STREET

JEFFERSON CITY

MISSOURI

PHONE 491

*Compliments
of the*

**NEHI
BOTTLING CO.**

Compliments of

Clibourne's

DRY GOODS STORE

*The Little Store With
Big Values*

223 E. HIGH ST.

PHONE 23

Jack King

SHOE SHINING PARLOR

HATS CLEANED AND BLOCKED

Work Guaranteed

528 LAFAYETTE

GOOD THINGS
TO EAT

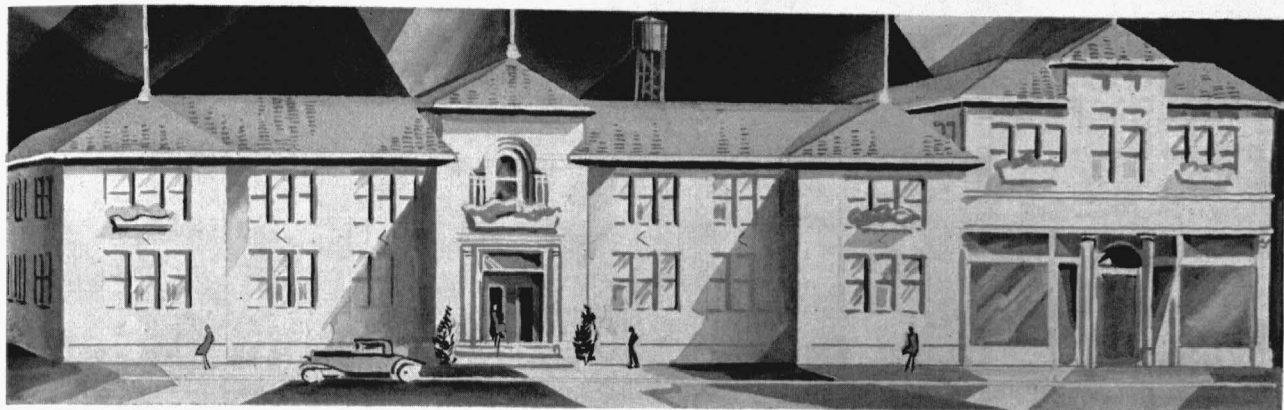
**WRIGHT'S
CLEAN GROCERY**

Meachum Cafe

*Home-Cooked Meals of Quality
and Satisfaction*

BARBECUE—FISH
ICE CREAM
SODA WATER

713 E. ELM STREET



The value of any School Annual printing and binding contract lies not in specifications alone. Back of these must be *inclination* and *ability* to give the best. This organization has *definitely* proven its high standards through years of *undeniable leadership* in fine annual production in America. Signing a “Kraft-Built” printing and binding contract is the logical act of a sagacious staff.



Botz-Hugh Stephens Press
KRAFT-BUILT SCHOOL ANNUALS-JEFFERSON CITY, MO.

Shryack - Hirst Grocery Company

WHOLESALE
GROCERIES



JEFFERSON CITY, MISSOURI

ICE CREAM

ALL KINDS
ALL DELICIOUS
FOR ALL OCCASIONS



MOBERLY
MEXICO
JEFFERSON CITY

BOONVILLE
CALIFORNIA

SEDALIA
FULTON
CLINTON

BECKLEY CARDY COMPANY

SCHOOL FURNISHERS

School Equipment and Supplies of all kinds

Manufacturers—Wholesalers—Publishers

BETTER MERCHANDISE—LOWER PRICES

Our Prices Are Always the Lowest on
Guaranteed Quality Merchandise

17-21 EAST TWENTY-THIRD ST.

CHICAGO, ILLINOIS

Certified Lumber

Is the mark that insures you in getting exactly what you are entitled to when you build your home.

It is insurance that the quality, grade, count and kind are right. The cost is no more, but the ultimate results are great.

Scruggs - Guhleman Lumber Company

ON McCARTY ST. AT JEFFERSON

*Where Three National
Highways Cross*

CONGRATULATIONS TO CLASS
OF 1930

DeWyl Drug Store

PHONE 135 222 E. HIGH ST.

SHOES YOU LIKE TO WEAR AT
PRICES YOU CAN AFFORD TO PAY

Schultz's SHOE STORE

The Newest Styles Always

DRESS SHOES—SPORT SHOES
SCHOOL SHOES

Agents for

MAJESTIC
RADIOLA
PHILCO
BRUNSWICK RECORDS
COLUMBIA RECORDS



Jefferson Radio Co.

ACROSS FROM JEFFERSON THEATRE
THEODORE SCHOTT
Proprietor

Crown Drug Co.

210 E. HIGH STREET

*"Service With a
Saving"*

Compliments

of

Dr. R. G. Richardson

PHONE 644

421 LAFAYETTE STREET

SILVERTOWN CORDS

BEST IN THE
LONG RUN

Harry Blackwell
INCORPORATED
CONSCIENTIOUS AUTO SERVICE

Burkel & Bosch

Dealers in

EXCLUSIVELY FINE
FOOTWEAR

QUALITY AND QUANTITY

Repairing Neatly Done

PHONE 501

STAR CLEANERS

CRAFTSMEN IN KEEPING THINGS
CLEAN

23 Years of Experience

E. E. ROLLS

26 E. HIGH STREET

PHONES 318-1646

Eye, Ear, Nose, Throat—Fitting of Glasses
X-Ray, Radium

J. S. SUMMERS, A. M., M. D.

J. T. LESLIE, M. D.

Seventh Floor, Central Trust Bldg.

PHONE 399

JEFFERSON CITY, Mo.

Associated With Dr. Summers
DALE and GLENN SUMMERS
Reg. Optometrists

RACKERS *and* RACKERS

*Commercial
Studio*

212 MADISON STREET

JEFFERSON CITY

MISSOURI

MILLER CLOTHING CO.

Home of

HART SCHAFFNER & MARX
GOOD CLOTHING

ROY COBBLE and ED. PAYNE

Proprietors

129 E. HIGH ST.

PHONE 1866

Retail Baker's cakes and
pies
Save the housewife many
sighs.

PURITY *and* CAPITAL CITY BAKERY

Compliments of

OTTO SLANKER

Plumbing and Heating Co.



325 MADISON STREET

PHONE 742

King Grocery Company

PHONE 1346

600 LAFAYETTE STREET

FRESH MEATS

and

VEGETABLES

GIVE US YOUR PARTY BUSINESS
IT WILL BE APPRECIATED

CZARLINSKYS
"CLOTHES FOR LAD AND GAD"

Opposite the Courthouse

BEST WISHES

to

LINCOLN UNIVERSITY

May you achieve your highest
aspirations for the greatest and
most influential University for
colored students in America.

THE NEW DAY PRESS

Complete Printing Service

PHONE 802

JEFFERSON CITY, MO

THE NU-WAY SHOE SHOP

B. H. LOGAN

Proprietor

Shoes repaired by the
latest methods with
modern equipment

LAFAYETTE STREET

**CAPITAL FRUIT
and PRODUCE
COMPANY**

133 WEST HIGH STREET
PHONE 1167

L. H. KIRK
H. E. ROBINSON



FRESH FRUIT AND
VEGETABLES

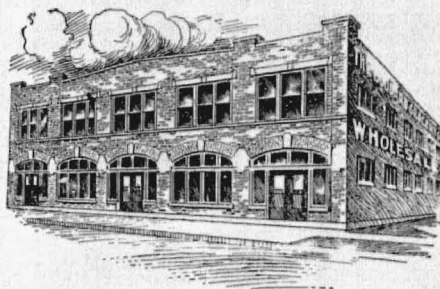
*Wholesale and
Retail*

***A. Brandenberger
Drug Co., Inc.***

*"The Rexall
Store"*



130 E. HIGH STREET
JEFFERSON CITY MISSOURI



**GODDARD
GROCERY
CO.**

Jefferson Cleaners

CLEANING—PRESSING
ALTERING

TAILOR-MADE
SUITS

222 E. HIGH

PHONE 982

Eat the Best
HUB and QUAKER

BREAD

JEFFERSON CITY
BAKING CO.

EVERYTHING IN DRUGS

CANDIES, CIGARS
PERFUMES

East End Drug Company

SAM F. STOLL, Ph. G.
Manager

HIGH AT LAFAYETTE

The Students and Faculty
of Lincoln University
thank the merchants of
Jefferson City for the aid
they have given in mak-
ing this book possible.

Jefferson City Produce Co.

Wholesale

FRUITS—VEGETABLES
FEED

JEFFERSON CITY, MISSOURI

PHONES—572—124

LINCOLN CAFE

COLD DRINKS—LUNCH
ICE CREAM

Also Taxi Service

PHONE 1455

901 E. ATCHISON STREET
AUGUST CLARK, *Proprietor*

"Say It With Flowers"

Bouquets and Sprays for Parties,
Dances, Mother's Day, etc.
Prices very reasonable.

HUGO BUSCH

Florist

MADISON AND DUNKLIN STREETS

Schell & Ward

101 E. HIGH STREET

Make Our Store Your Headquarters

For

SHOES and HABERDASHERY.

BARTLETT BOOK STORE

BOOKS AND STATIONERY

WALLPAPER

DEVOE PAINTS

WINDOW SHADES

**PELTASON'S
DRY GOODS CO.**

227 MADISON STREET

*They Know What You
Want*

COMPLETE LINE
OF

LADIES' and CHILDREN'S
READY-TO-WEAR
GARMENTS

John H. Rodeman



HARDWARE
IMPLEMENTS
SUPPLIES

SEEDS
EXPLOSIVES
SADDLERY

AUTOMOTIVE
PARTS

413-415 W. MAIN STREET
PHONES 232-2000

At Your Service

Very likely we can assist,
by suggestion, in the selec-
tion of shoes your costume
demands.

ALLEN "A" HOSIERY

We invite the return of
any pair not satisfactory.
We have few returns.

\$1.00 TO \$2.50

WEATHERBY'S

HOLLEROTH & WISCHMEIER
122 EAST HIGH STREET

**The University
Lunch Room**

"OPPOSITE THE GATE"

*Meals and Refreshments
at All Hours*

BARBECUE THAT'S FAMOUS

IT ISN'T A HOME WITHOUT A
TELEPHONE

**CAPITAL CITY
TELEPHONE
COMPANY**

**YOUR INTERESTS
SAFEGUARDED**

When You Buy
DULLE'S PATENT FLOUR
CAPITAL STAR FLOUR
RED SEAL SELF-RISING FLOUR
DULLE'S BEST HARD WHEAT
FLOUR

*75 Years of Progressive
Milling*

**G. H. DULLE
MILLING CO.**

JEFFERSON CITY, Mo.

Lincoln University

Gives you knowledge
well worth obtaining



The OTT LUMBER CO.

Gives you service and
quality well worth
giving you their pa-
tronage.

Boost for Them

KUNZ

25c

CAB and BAGGAGE CO.

TRAIN CALLS
PARTY CALLS

Nite or Day Service

PHONE 1626
932 EAST MILLER STREET

***Colleges, Restaurant
and Hotels***

Can obtain quick service
when in need of supplies
by either writing or
telephoning



SID CONDUCT

208 SOUTH OHIO SEDALIA, Mo.

Constantly Searching



FOR centuries astronomers have looked into the skies searching for new worlds, constellations and stars. Aside from their interesting research work, they have learned much that is of practical scientific value.

Similarly, in the field of student publications, the Indianapolis Engraving Company searches constantly for new ideas, plans and methods that will assist year-book staffs to publish successfully books characteristic of their school and community. The results of these efforts are gratifying.

The Annual Planning and Designing Department welcomes your inquiries for further information.

Established 1895

INDIANAPOLIS ENGRAVING COMPANY

Department of Annual Planning and Designing

INDIANAPOLIS, INDIANA

