

# THE QUILL

1929



*Published by the*  
SENIOR CLASS OF LINCOLN  
UNIVERSITY

---

# FOREWORD

*In the hope that  
the many happy  
hours spent here  
might in a way  
still live, this  
book is conceived*

---

# ORDER BOOKS

Administration

Classes

Activities

Clubs

Snaps

Campus News

Advertisements

---

# DEDICATION

---

*In grateful appreciation of the kindly sympathy and desire of cooperation shown by the merchants and citizens, this book is dedicated to the city of Jefferson City, Missouri.*

---





THE beautiful Missouri Capitol at Jefferson City is *your* Capitol. It is the privilege of all Missourians to view it with the pride of ownership. And what a privilege!

The Missouri Capitol is a lodestone that attracts thousands upon thousands to Jefferson City every year. It is one of the very beautiful structures of America. Whole "caravans" of artists and art lovers come from long distances to see the paintings and sculptural decorations. Throughout the Capitol are paintings, no priceless, by such artists as Brangwyn, Berninghaus, Reuterdaahl, Hoffbauer, Blondheim, Wyeth, and others. Sculptural work by Fraser, Bitter and Weinman adorns the structure inside and outside.

But one need not be an artist to appreciate and find interest in the Capitol. By far the greater number of people who visit the Capitol are those who simply enjoy beauty and grandeur wherever they find it.

In addition to the art and architectural features of the building are the Soldiers' and Sailors' Museum, and the quite complete natural history, agricultural and historical museum, of interest to student and layman. From the 260-foot dome of the Capitol may be had an inspiring view of the city, the Missouri river and surrounding country.

The Missouri Capitol affords an intellectual feast to about 100,000 visitors each year. The number is increasing yearly as state and national highways are improved.

Other important points of interest at Jefferson City are the State Penitentiary, a city of industry itself (manufacturing products for state institutions); and the State Supreme Court building, a beautiful brick building, facing the Capitol across High Street and the broad plaza. It contains one of the most complete law libraries in the world. This library has the reports of the highest courts of every English-speaking nation and of every state in the Union. It is valued at a half-million dollars.



## Industrial Jefferson City

**I**N SUCH small space, what facts are given regarding industrial Jefferson City must be given briefly. However, the co-operation of city officials and the Chamber of Commerce is pledged to give unbiased, complete information to those interested in locating in Jefferson City. Legitimate enterprises are invited to Jefferson City. Splendid plant sites are available.

With the tendency of industries to decentralize from the large cities because of the economical advantages of smaller cities, Jefferson City is directly in the path of industrial expansion. Transportation facilities are ideal, labor resources good, and a central location gives economies in distribution of manufactured products and acquisition of raw products.

Some brief facts about Jefferson City:

Population now between 18,000 and 19,000—an increase of 50 per cent in the last 7 years.

Twenty thriving manufactories with annual payroll of \$2,500,000.

Served by following railroads: Main line Missouri Pacific, St. Louis to Kansas City; Missouri Pacific branch to Bagnell; main line Missouri, Kansas and Texas, operating from St. Louis direct into the Southwest; Chicago and Alton branch to Mexico, Missouri.

Three United States highways, routes Nos. 50, 54 and 63. Also connected with No. 40 cross-state "airline," 25 miles north.

Four large banks, resources \$10,500,000; deposits, \$9,503,900.

Nine building and loan associations, total loans, \$4,700,000.

Jefferson City is eighth in population and sixth in bank deposits in Missouri.

More than 200 retail establishments; 6 wholesale houses.

Two daily newspapers; 4 large hotels; 16 churches; 7 grade schools, high school, junior high school, junior college, Lincoln University, 3 parochial schools.

Jefferson City has a fine Carnegie library.

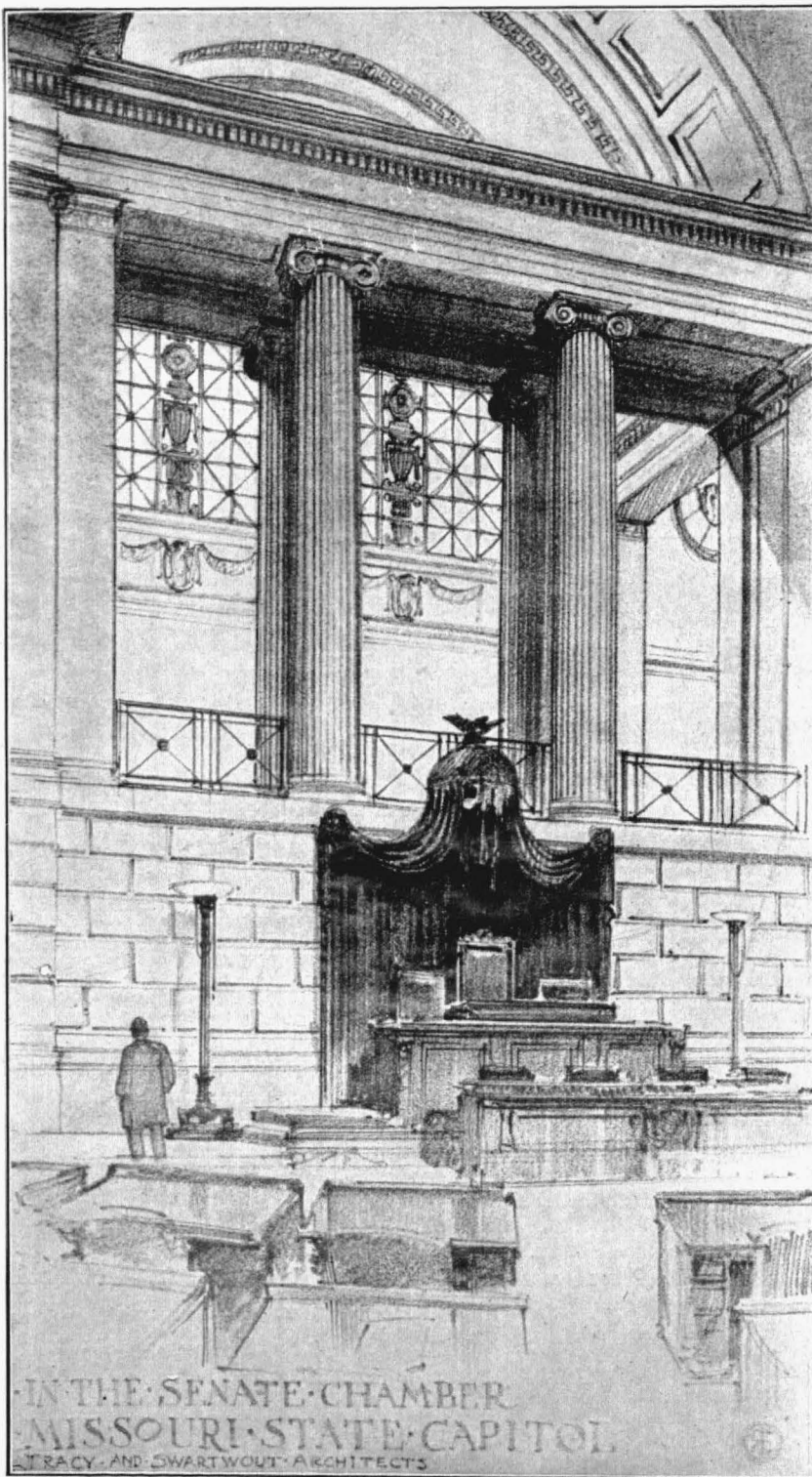
St. Mary's Hospital, serving 900 patients per year, maternity ward, X-ray and fluoroscope equipment.

Postoffice payroll of \$95,000 per year. 16 mail trains each day give Jefferson City adequate mail service.

Jefferson City is 125 miles from St. Louis, 160 miles from Kansas City, 150 miles from Springfield.

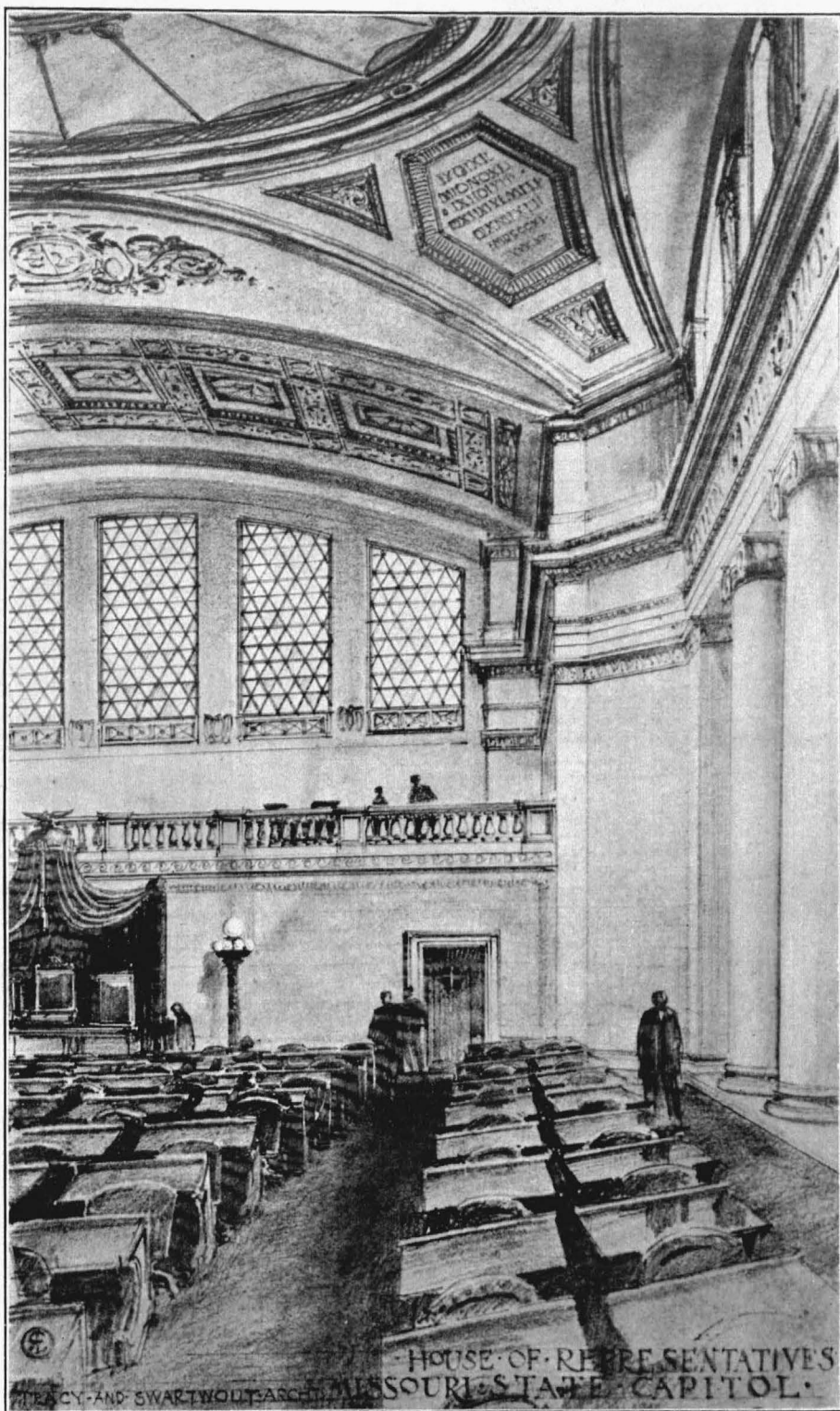
Civic organizations: Chamber of Commerce, Rotary, Kiwanis, Lions Clubs. Girl and Boy Scout organizations with full-time executives and permanent summer and winter camps.



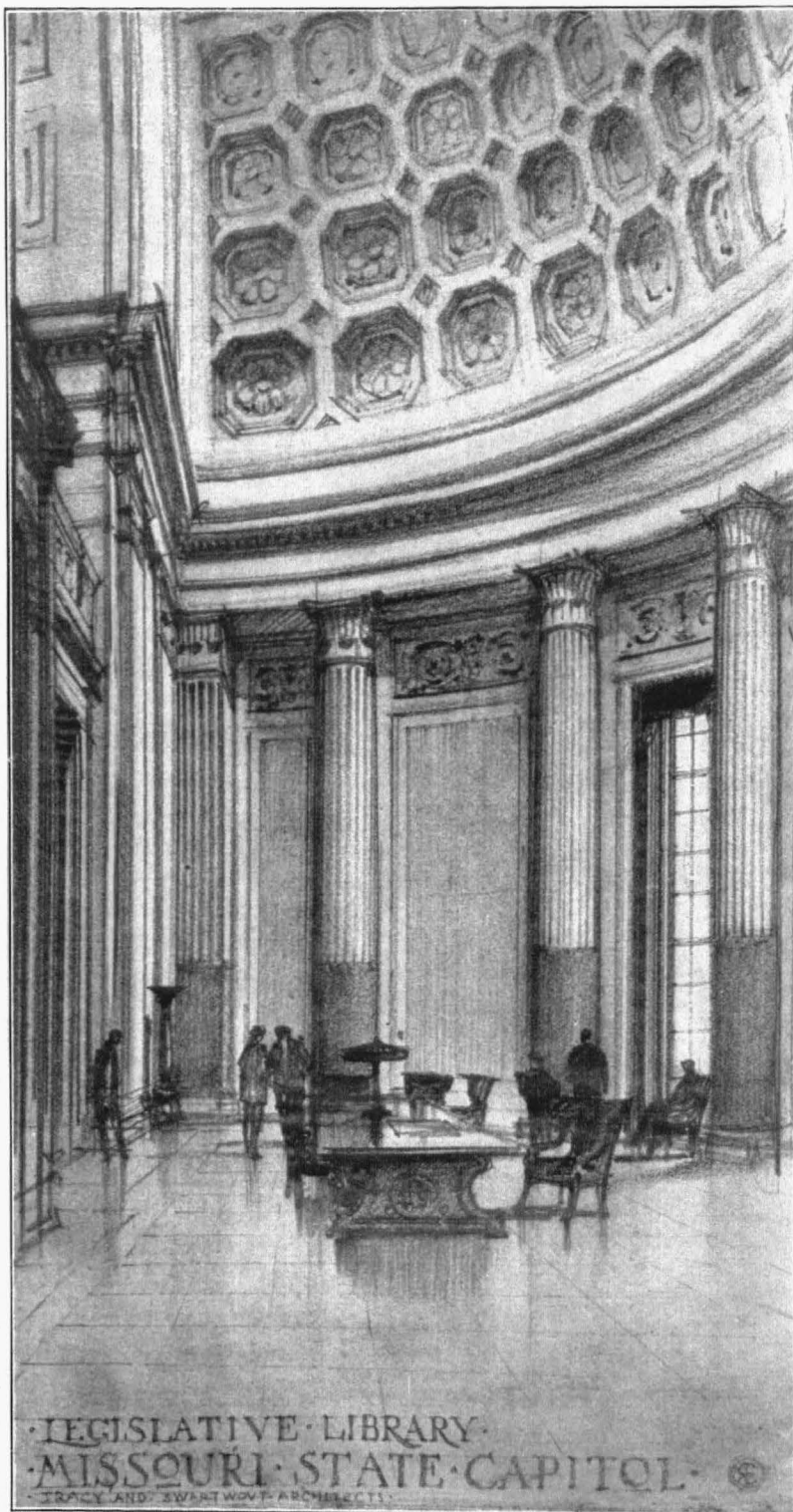


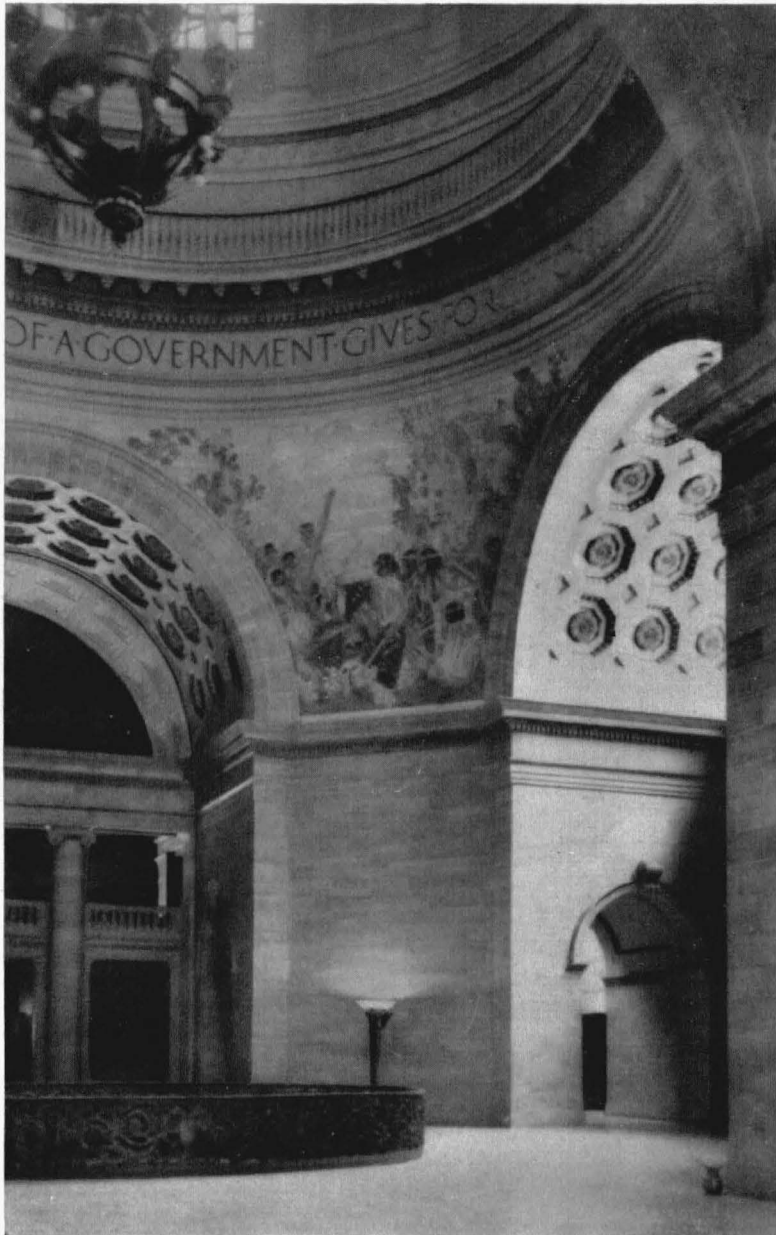
IN THE SENATE CHAMBER  
MISSOURI STATE CAPITOL  
TRACY AND SWARTWOUT ARCHITECTS







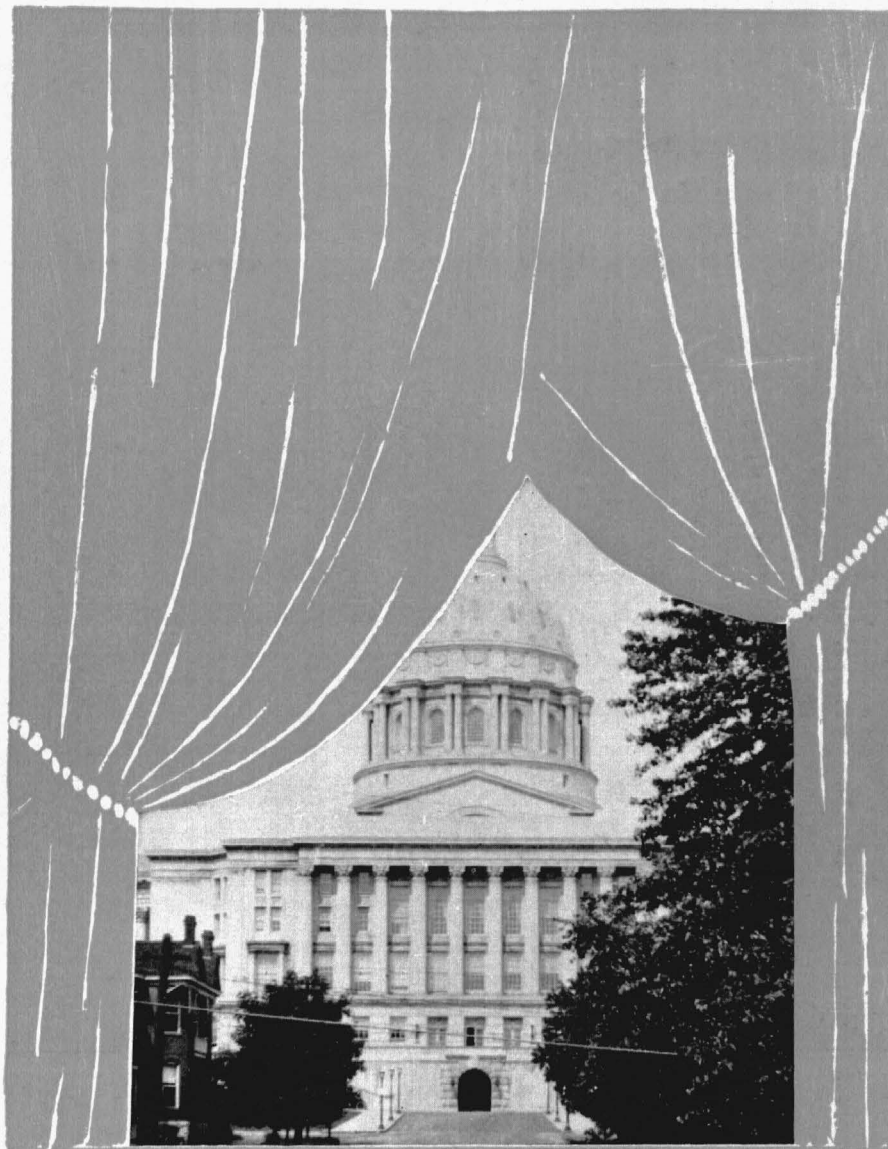






Miss Zenobia A. James  
*Queen of the 1929 Quill*

---



## ADMINISTRATION



W. B. JASON, *President*



# Board of Curators



1. PROFESSOR J. D. ELLIFF . . . . . Columbia, Mo.
2. MRS. W. P. CURTIS . . . . . St. Louis, Mo.
3. MR. EDGAR R. ROMBAUER . . . . . St. Louis, Mo.
4. HON. CHAS. NAGEL . . . . . St. Louis, Mo.
5. DR. J. E. PERRY . . . . . Kansas City, Mo.
6. PROFESSOR J. B. COLEMAN . . . . . Columbia, Mo.
7. HON. CHAS. LEE . . . . . Jefferson City, Mo.

WILLIAM BARRINGTON JASON  
*President of Lincoln University*

## *University Training—*

- (a) Howard University, A. B., 1913.
- (b) University of Pennsylvania, 1913-1916, A. M., 1915.  
Graduate School University of Iowa (Summer 1921).

## *Experience—*

1. Georgia State College, 1916-1918;  
Instructor of Mathematics and Education.
2. Lincoln University, 1919—  
Instructor of Mathematics and Chemistry (Football Coach) 1919-1923.  
Professor of Mathematics and Physics, 1923-1927.  
Director of College, 1924-1925.  
Principal of High School, 1925-1927.  
Dean of College, 1925-1927.  
Acting President, 1927-1928.  
President, 1928.



W. SHERMAN SAVAGE, A. B., A. M.  
*Professor of History*

A. B., Howard University, 1917;  
Graduate Student University of Kan-  
sas, Summers, 1921-23; A. M., Uni-  
versity of Oregon, 1925; Graduate  
student University of Oregon, 1925  
Summer.



LANGSTON F. BATE, A. B., A. M.,  
Ph. D.  
*Professor of Chemistry*

A. B., Illinois State Normal, 1920;  
A. M., University of Chicago, 1923;  
Ph. D., University of Chicago, 1926.



L. S. CURTIS, A. B., A. M.  
*Professor of Economics*  
A. B., Harvard University, 1919;  
A. M., Columbia University, 1925.



ROENA MUCKELROY  
*Instructor of Voice*  
B. Mus., University of Southern  
California.



THOMAS H. MILES, A. B., A. M.  
*Assistant Professor of Mathematics*  
A. B., Lincoln University, Pa.,  
1918; A. M., University of Pa., 1925.

JAMES D. PARKS, B. S.  
*Instructor of Art*  
B. S., Bradley Polytechnic Insti-  
tute, 1926.

WILLIAM H. BRADY  
*Secretary to President*  
B. S., Lincoln University, 1927.

GRACE DORSEY  
*Critic Teacher*  
University of Omaha.

NORVAL P. BARKSDALE, A. B.  
*Professor of Modern Languages*  
A. B., University of Kansas, 1922;  
Student University Dijon, France,  
1923-24; Diplome D'Etude Francaises  
et Phonetiques, Dijon, France, 1926.

EUNICE V. PEPSICO, B. S., M. A.  
*Assistant Instructor of Home Economics*  
B. S., Ohio State University, 1923;  
M. A., Ohio State University, 1925.





SYLVESTER F. COLLINS, A. B., A. M.  
*Professor of Education*

A. B., Livingston College, 1909;  
Student Boston University, 1915;  
A. M., University of Cincinnati, 1926.



RICHARD K. FOX, A. B., A. M.  
*Assistant Professor of Education*

A. B., Ohio University, 1923; A. M.,  
University of Cincinnati, 1927.



SIDNEY J. REEDY, A. B., A. M.  
*Professor of Latin*  
A. B., Lincoln '26; A. M., Uni-  
versity of Iowa, 1927.



GEORGE R. COLLINS, B. S.  
*Instructor of Physical Education*  
B. S., Coe College, 1925; Graduate  
Student University of Iowa, 1926.



LOVEY A. ANTHONY  
*Librarian*  
Hampton Institute Library School.

IDA A. HILL  
*Matron of Barnes-Krekel Hall*

CARRIE B. CARRION  
*Matron of Yates Hall*

MARIE H. FORD, Mus. B.  
*Instructor of Music*  
Mus. B., Chicago Musical College,  
Graduate Student University of Cali-  
fornia, L. A.

MACEO T. WILLIAMS  
*Instructor of Orchestra*  
New England Conservatory of  
Music.

CECIL A. BLUE  
*Professor of English Literature*  
A. B., Harvard, 1925; A. M., 1926.





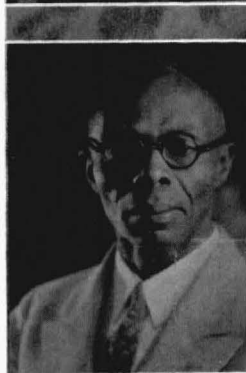
J. D. PARKS  
B. S., Bradley Polytechnic Institute, 1926.

*Track Coach*



A. L. HAMMONS  
B. S., Prairie View College, 1922.

*Instructor of Agriculture*



\*EDWARD B. JONES, A. B., M. S.  
A. B., Colgate University, 1905; M. S., University of Iowa, 1927.

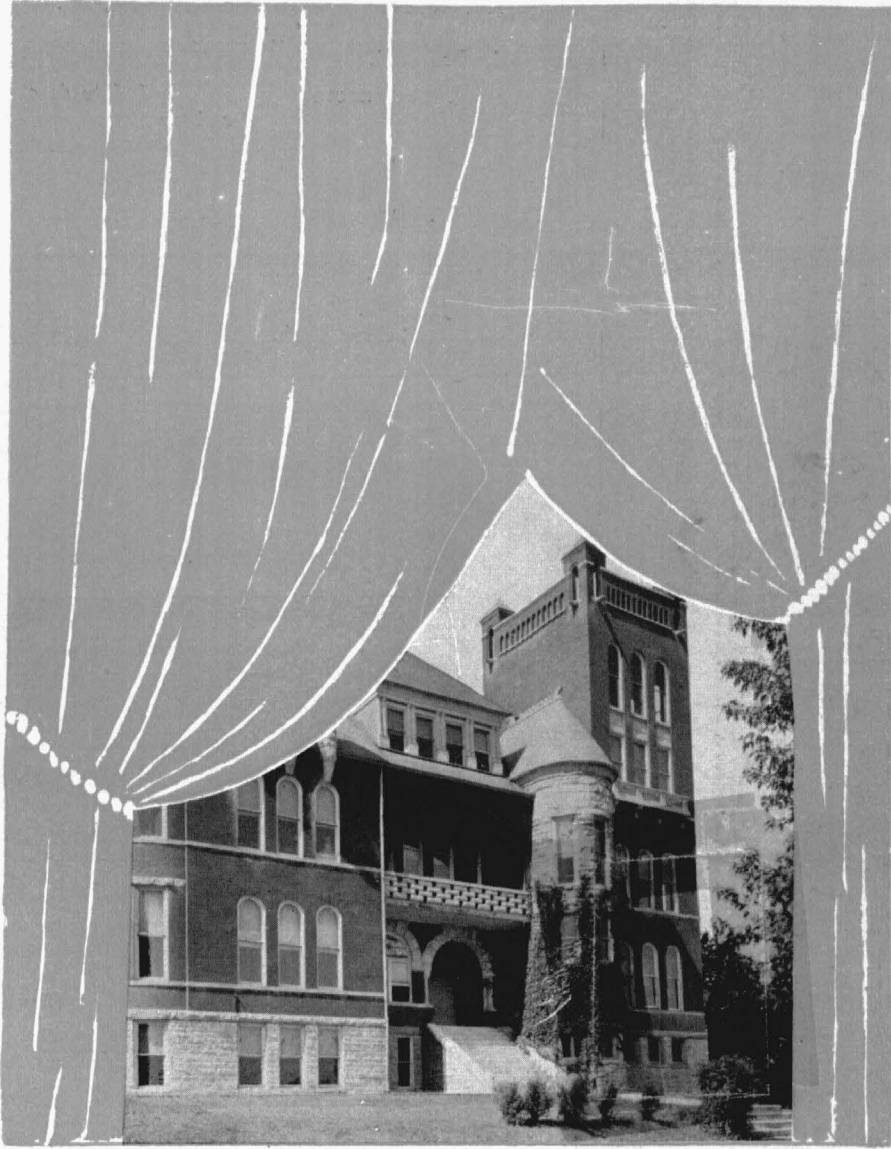
*Professor of Biology*



MRS. JULES MORRISON

*Dining Room Matron*

\*Deceased.



## C L A S S E S



# Senior Class



WM. M. CONNOR *Columbia, Mo.*  
*Biology*

Le Brummel.

S. WM. PROCTOR *Independence; Mo.*  
*Chemistry*

TURNER G. WASHINGTON *Jefferson City, Mo.*  
*Mathematics*

Le Brummel.

JESSE M. DREW *Buncelon*  
*Science Club.*

JULIES H. GAITER *Chicago, Ill.*  
*Chemistry*

ΔΔΦ.

ZENOBIA A. JAMES *McAlester, Okla.*  
*Chemistry*

La Portella.

DEARMOND C. STEWART *Sedalia*  
*Physics*

ΔΔΦ.

GEORGE J. SCOTT *Fullton*  
*English*

ΔΔΦ.

ALFRED L. STEVENSON *St. Louis*  
*History*

Le Brummel.

KERMIT R. BOOKER *Lexington*  
*Biology*

ΔΔΦ; President Commercial Club, 1929;  
Varsity Football, 1926-'29.

HENRY Q. BURNETT *Orlando, Fla.*  
*Biology*

Le Beau Brummel.

GEO. JOHNSON *Bartlesville, Okla.*  
*Principal Douglass High School*

# Junior Class

ELIZABETH ROSS

*Cairo, Ill.*

*History*

ΠΣΓ.

HADLEY H. HARTSHORN

*St. Joseph*

*Chemistry*

ΔΑΦ.

MARINDA FERGUSON

*Marshall*

*History*

ΠΣΓ.

RUTH ALLEN

*Jefferson City*

ΠΣΓ.

LEANDER ROGERS

*Nowata, Okla.*

Le Brummel.

RICHARD E. KELLEY

*Columbia*

*Chemistry*

Le Brummel.

HENRIETTA PEARLY

*Liberty*

*English*

ΠΣΓ.

MARY LOUISE RAY

*St. Joseph*

ΠΣΓ.

FINIS WM. SIMMS

*Sedalia*

Le Brummel.

LEANETTA H. HILL

*Kansas City*

*English*

La Portella.



# Sophomores



ANGIE KERFORD

*St. Joseph*



ELIZABETH SANFORD

*St. Louis*



LOUISE CARTER

*Sedalia*



ELLA BROWN

*Kansas City*



WILLIE L. WATSON  
La Portella.

*Kansas City*



MAYME BUFORD

*Higginsville*



DAISY GRAVES

*Fulton*



IDELL ADKINS  
Silver Leaf.

*Kansas City*



MARGARET BURTON  
Silver Leaf.

*Marshall*



ROBERTA SCOTT  
Silver Leaf.

*Marshall*

# Sophomores

ARIEL KING  
ΔΑΦ.

*St. Louis*

ETHEL MAE SHADE  
La Portella.

*Wagoner*



MARSHALL L. BEASON  
ΔΑΦ.

*Wagoner*

GWENDOLYN TILFORD  
La Portella.

*Columbia*



HORTENSE MILLER  
La Portella.

*Fort Smith, Ark.*

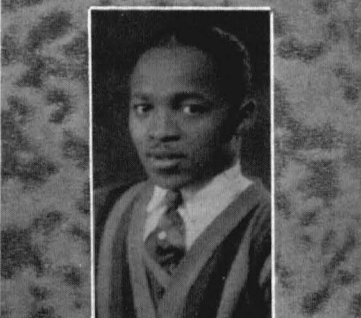
EDMONIA KERFORD  
Kewpie.

*St. Joseph*



WILLIE B. WALKER  
ΔΑΦ.

*St. Louis*



# Freshmen



PRECIOUS RUTH HILL  
Silver Leaf.

*Columbia*



EDDIE LUCILLE JONES

*Columbia*



LUCILLE MASON

*Carbondale, Ill.*



MABLE GRADINGTON  
Silver Leaf.

*El Paso, Texas*



GEORGIA STEWART

*Sedalia*



MARY A. REEVES

*Sedalia*



EULA BARNES

*Kansas City*



PORTIA POWERS

*Hannibal*



NORVELL BREWER

*Springfield*



DORIS KERFORD  
Kewpie.

*St. Joseph*



# Freshmen

THELMA JOHNSON

*St. Louis*

WENDELL DOUGLASS  
ΔΑΦ.

*St. Joseph*



RUTH BURTON  
ΠΣΓ.

*Kingfisher, Okla.*

MAUDELL ABBOTT

*Sedalia*



ROBERT REID  
ΔΑΦ.

*Fulton*

LOIS BENSON

*Ft. Worth, Texas*



CHARLOTTE MADISON  
Silver Leaf.

*St. Joseph*

BEVERLY SAILES  
ΓΨΕ.

*Columbia*



AURELIUS WHALEY  
ΓΨΕ.

*Hannibal*

CLEMENTINE SEXTON  
ΠΣΓ.

*St. Joseph*





# Academy

EUGENIA SWADER *Liberty*  
*Fourth Year*  
 JESSE ASHFORD *St. Louis*  
*Fourth Year*



LAVETTE HUNTER *Versailles*  
*Fourth Year*  
 ANN M. WALKER *New Port, Ark.*  
*Fourth Year*



JUANITA DAVIS *St. Louis*  
*Fourth Year*  
 GOLER COLLINS *Jefferson City*  
*Second Year*



WESLEY MCGUIRE *Herculaneum*  
*Fourth Year*  
 JETTIE M. SMITH *Poplar Bluff*  
*Fourth Year*



RUBY POSTON *Fulton*  
*Third Year*  
 DOROTHY DEAN *Edwardsville, Ill.*  
*Fourth Year*

# Academy

ROSE TOMPKINS

*Springfield*

ISIAH HOLMES

*Marshall*



CHARLIE NICHOLS

*Armstrong*

CLARENCE TURPIN

*Monticello*



GEORGIA M. VANES

*Williamsburg*

CLARK DONALDSON

*Caruthersville*



A. L. HAMMONS (Adv.)

*Jefferson City*

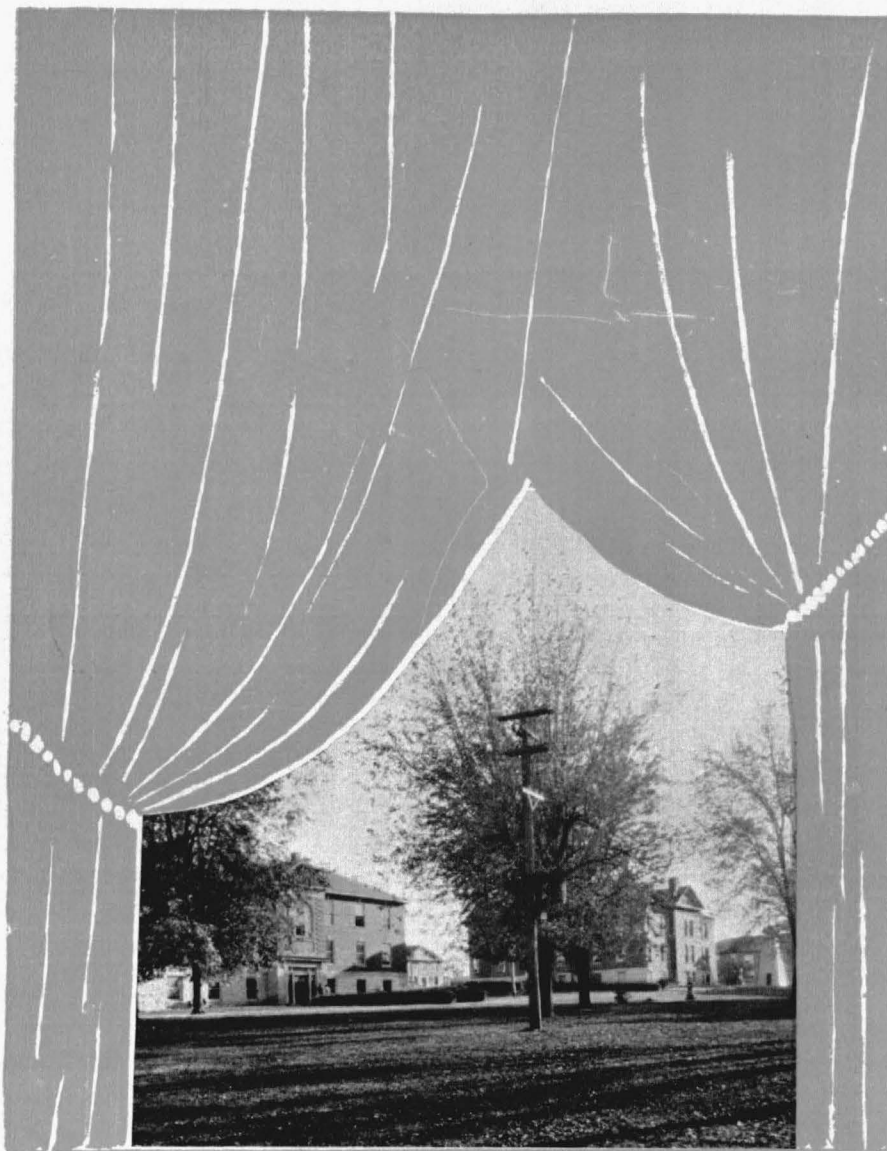


# Lincoln University

OFFICIALLY RECOGNIZED



THE time is not long past when the student coming to Lincoln University felt that he was coming to a school of the second order. This has all been changed, however, and the student now leaves Lincoln University with a Bona Fide degree of which he need not be ashamed. Both the high school and the college department are approved by the North Central Association of schools and colleges. The reputation and prestige of the school as one doing creditable work is fast spreading. City and county superintendents eagerly take our graduates and a number of the larger mid-western universities—including notably Kansas University and Iowa University now accept our students' records hour for hour. This condition has been brought about by a loyal student body, improved library and laboratory facilities, a greatly strengthened faculty, and a determination on the part of all concerned to pull together for a greater Lincoln. The completion of the present program will make the position of Lincoln University an enviable one among colored colleges.



## ATHLETICS



## Football

THE football season of 1928 leaves us with a feeling of greater joy than that of 1927. Having had a team 90% better than the one of the previous years and having won 50% more games than the last season gives us a reason beyond all doubt for being joyful. Eh, what?

Early in September, Coach Collins sent out his appeal for football material and the response was of such a nature that enough men were obtained to line out three teams with enough of last season's veterans to compose an entire team; to this number was added other stars whose past performances at other Colleges and high schools had placed them in stellar rank and whose addition to Lincoln's line-up greatly boosted the weak spots. Among those new stars that shone so brilliantly we must mention Voris (Frosty) Dickerson. This young giant came to us from Iowa State University where he measured his stride against some of the best in the land and so great was his ability that he won the admiration of those who viewed his actions on the gridiron. No less praise can be given "The Three Musketeers:" Blackshear, the peerless left tackle whose playing and whose brainy action whenever a crisis came changed the minds of many an opposing player who sought to charge over his position. Baker, the diminutive backfield star whose line ploughing can seldom be beaten. It was this chubby bundle of steel springs that plunged his way through the seemingly impregnable line of Wilberforce to place the ball within striking distance. And last but not least we have the towering Donehue Goins, whose position at end can seldom be beaten. His speed and ability to diagnose the plays long before others were started assisted greatly in the good showing L. U. made in the football world. This list would not be complete if we did not at least mention the par excellent "D'Artagnan" Rocquemore. This end who played in co-ordination with Rogers hails from Muskogee, Oklahoma. His playing was of such caliber that he was chosen as an all-American end; ever fearless, swift and heady he kept the enemy on the alert.





The following is a summary of the games played by the Blue and White:

On September 29th the St. Louis Reds, a team composed of former stars of Sumner High School of St. Louis and others including our own chubby Baker and the lanky D. Goins invaded the lair of the Tiger. The game cleanly and snappily played ended in a 6 to 6 tie, we had neither gained nor lost so far as games were concerned, but we did gain a kind of seasoning for the following games.

"We are in the Army now!" The following week, Oct. 6, the snarling Tiger left its lair to answer the challenge of the 9th Cavalry. This was a premier performance in which brains conquered brute force and the little team, the best little team in the world, left the giant holding the empty sack with thirteen scratches across his face. Score: L. U. 13, Army 0.

Lincoln, Lincoln, Rah! Rah! Rah. Wilberforce, Wilberforce, Ha, Ha, Ha, was all one could hear on the campus Oct. 13th. But when the game was over Wilberforce sang that song in reverse, for I am sorry to state that in spite of the brilliant playing of the team we lost to the Buckeyes 12 to 6. We are warning the Buckeyes to Buck their eyes more for we are out for their meat next year. Wilberforce 12, L. U. 6.

With a two weeks' rest hung upon our shoulders and a will to kill we answered the call of the "Jay Hawk." Oct. 27 found us at the Topeka Vocational College at Topeka, Kansas. There was no taming of the Tiger. As an avalanche roars down the mountain side, sweeping all before it, so did the Tiger with bared fangs pounce down upon the fluttering, clumsy, boastful Jay Hawk. Here signal 45 kept the enemy bewildered and here's to the end of a perfect day. The score: Topeka Vocational College 0, Lincoln University 38.

November 3rd found us on very unfamiliar ground away from our haunts and in the shadow of the Blue Ridge Mountains of Virginia. We fought hard against the breaks that Fate had deemed we should not have and we were forced to bend to the will of the Virginians and had to be content with the small end of a 20 to 7 score.



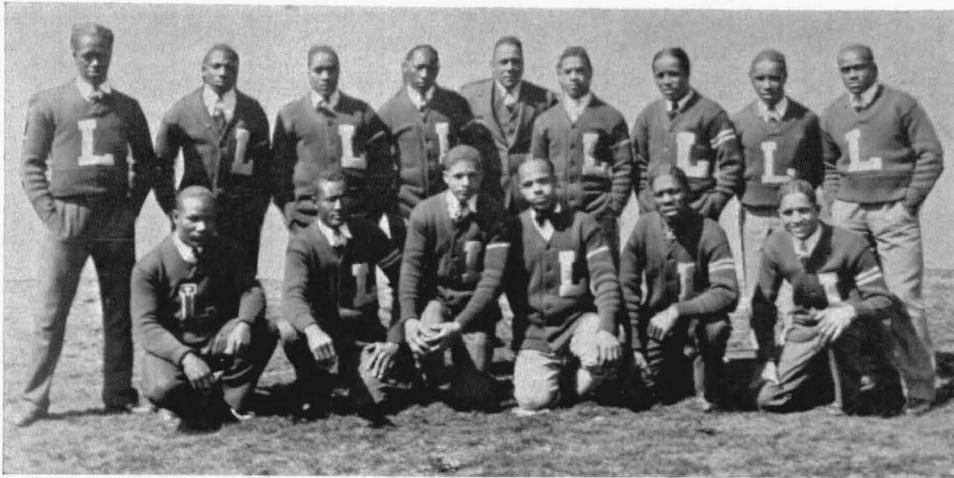
LANGSTON! That same nightmare that has risen before us for the past five years bobbed up again on November 10, and we gave it a battle. The Sooners found to their surprise the spirit of the Cat unbroken and we let them beat us because the oil spread out by the Oilers made the going slippery and we were dealt the blank hand in a 28 to 0 deal.

Bull dogs, Bull dogs they are bad, Bit us once and we got mad. Thanksgiving day found us entertaining the hopeful Bulldogs of Western University of Quindaro, Kansas. They held high hopes of eating Tiger meat, but alas, we just couldn't agree on menu, consequently the poor Bulldog had to accept a marrowless bone. Western went down to a 12 to 0 defeat.

So, here's to the team

The grand old team

The best little team in the world.



## The "L" Club

*Left to right, standing—*

EDWARD SMITH, CHARLES BLACKSHEAR, BASIL NORTH, SAM WALLS, GEORGE R. COLLINS, Coach, ELIJAH BAKER, RICHARD KELLEY, WILLIAM WYNN, LEANDER ROGERS

*Kneeling—*

AZZIE CAMPBELL, ABRAHAM LINCOLN, GEORGE BROWN, WARDELL VAN BUREN, ALPHONSE TURNER, KERMIT BOOKER

The "L" Club is composed of men who have won letters on Varsity teams.



## The Whippets

### COLLEGE BASKET BALL TEAM

*Left to right, back row—*

FANNIE TURNER, SARAH HUBBLE, MAGGIE PEARLEY, IONE WATSON, RUTH ROBERTS

*Front row—*

ESTHER CLARK, OPAL WOODS (Capt.), ESTHER ROBERTS

IT HAS been customary in previous years to give all of the praise and honor to the boys' basket ball team, but Coach Livingston had ideas of her own concerning who should receive the honors and she thought that a change was necessary and a change was made.

The faithfulness with which both the College and High School teams worked and the splendid showing made by both teams must be commended.

The College girls lost both games played in the past season, but we are expecting a better showing from them next season and under the tutelage of their excellent Coach they are more than assured of a successful season.

Here are the College teams:

OPAL WOODS, *Captain*

*First team*

*Second Team*

ALMA MUSE . . . .	J. C. . . .	ESTHER ROBERTS
MAGGIE PEARLEY . . . .	S. C. . . .	IONE WATSON
ESTHER CLARK . . . .	R. F. . . .	FANNIE TURNER
SARAH HUBBLE . . . .	L. F. . . .	MARCELLA WILLIAMS
LOREE LESLIE . . . .	R. G. . . .	MARYALINE BLEDSOE
OPAL WOODS . . . .	L. G. . . .	RUTH ROBERTS



## High School Basket Ball Team

(GIRLS)

*Left to right, back row—*

DOREENE JOHNSON, FRANKIE WHITLOW, THELMA RENDER, MARGARETT DARBY, ELLENORA BALL

*Front row—*

FRANCES WRIGHT, FLOREE ROBINSON, ANNA WALKER (Capt.), ALICE BINGHAM, JETTIE SMITH

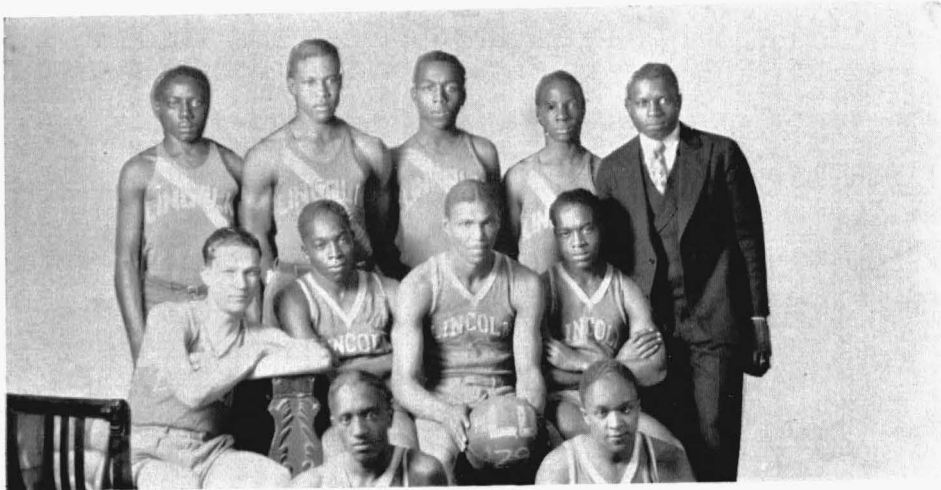
The games and scores can be had as follows:

February 23, 1929. Lincoln U. Whippets vs. Stowe Teachers College in St. Louis, Mo. Score: Whippets 9, Stowe 17.

March 2, 1929. Lincoln U. Whippets vs. Zeta Athletic Association at Lincoln University. Score: Whippets 9, Zetas 14.

THE High School Girls' Basket Ball team was more successful than the College in the games played, having won three out of four games. This team was fortunate in having the invincible Miss Smith, the star right forward, whose ability to shoot baskets seemed altogether natural. In every game she was high-point scorer. Sharing this honor with her but in a much less degree, we have Miss Whitlow.

Not wishing to give all praise to a few and let the masses go unheralded, the other members of the team come in for a share of the honor. Thanks at least must be donered to them for the splendid support they gave to the two star forwards.



## High School Basket Ball Team

*Left to right, back row—*

ISIAH HOLMES, GLENN DAVIS, TED JOHNSON, SAM DUNCAN, HIAWATHA HARRIS, Coach

*Middle row—*

PAUL PERKERSON, ROY LEE JOHNSON, DONEHUE GOINS (Capt.), RODERICK ELLINGTON

*Front row—*

WILLIAM JENNINGS, EDWARD KEENE

*(Continued from page 35.)*

The lineup of the first and second team is to be had as follows:

ANNA WALKER, *Captain*

### *First Team*

DORENE JOHNSON  
ANNA WALKER  
JETTIE SMITH  
FRANKIE WHITLOW  
MARGARET DARBY  
THELMA RENDER

J. C.  
S. C.  
R. F.  
L. F.  
R. G.  
L. G.

### *Second Team*

CHRISTINE BINGHAM  
JUANITA COBY  
FRANCES WRIGHT  
EDNA JOHNSON  
ELLENORA BALL  
FLOREE ROBINSON

The following are the games played by the High School team:

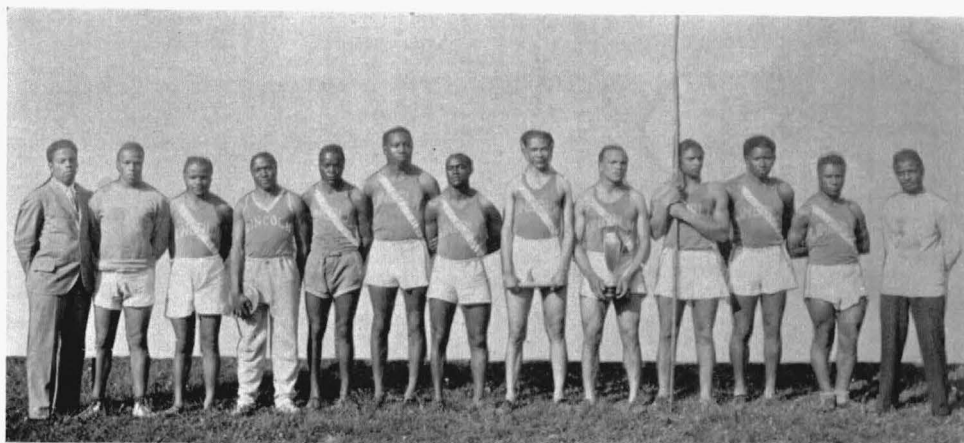
January 15, 1929—Lincoln U. High vs. Douglass High in Columbia. Score: L. U. 16, Douglass 11.

February 21, 1929—Lincoln U. High vs. Lincoln High in Sedalia. Score: L. U. 32, Lincoln High 1.

February 23, 1929—Lincoln U. High vs. Sumner High in St. Louis. Score: Lincoln U. High 20, Sumner 25.

March 2, 1929—Lincoln U. High vs. Sumner High at Lincoln University. Score: Lincoln U. High 30, Sumner High 17.





## Track Team

*Left to right—*

J. D. PARKS, Coach; WM. JOHNSON, GEORGE SCOTT, B. L. NORTH, ROBA FARR, J. M. DREW, L. ROGERS, RALPH SPENCER, EMMETT WALLS, GEORGE BROWN, Captain; RALPH SMITH, C. ANTHONY, H. H. HARTSHORN, Student Manager

Winners of Missouri State Negro Championship in 1928, seventh place at Central Inter-Collegiate Conference Meet at University of Notre Dame out of 20 colleges and Western A. A. U. Indoor Team Championship.

*Captain—*GEO. H. BROWN, '29.

*Student Manager—*H. HADLEY HARTSHORN, '30.

*Track Coach—*J. D. Parks.

Lincoln University track athletes hold the following honors:

Captain George H. Brown—In 1928 Brown made the longest recorded heave of any javelin thrower in the Negro Colleges, throwing the spear 172 feet, 8 inches. In 1929 he heaved the javelin 182 feet.

Leander Rogers—Semi-finalist in 75-yard dash at Illinois Relays. Holder of Wes. A. A. U. Championship and record at 600 yards with time of one minute, 20  $\frac{1}{5}$  seconds. Won the beautiful Leacock "600" trophy.

Voris Dickerson—Runner-up to Rourke of Notre Dame for broad jump championship at 1929 Central Inter-Collegiate Meet at University of Notre Dame. Dickerson's record is 23 feet, 1 inch.

Emmett Walls, holder of Wes. A. A. U. indoor championship at 50 and 300 yards.



## Baseball Squad

*Left to right—*

RALPH SHROPSHIRE, c; TED BROWN, p; PRESTON BELL, rf; ROBERT EDWARDS, ss; WM. CONNOR, cf; ARTHUR SHROPSHIRE, ss; ELIJAH BAKER, c, sub.; FRANK YOUNG, 1st; CHARLES BLACKSHEAR, lf; SYLVESTA CHAMBERS, rf; ELMER HOLLINS, 3rd; JOHN TURNER, 2nd; GEORGE COLLINS, Coach; BARKER, Mascot.

# L. U. Baseball Team

"LINCOLN U" has taken more interest in all forms of athletics this year besides football and basket ball and for this reason L. U. is hoping to have a strong baseball team. L. U. has not had a baseball team that was successful in getting out of town games to play for three years, due to the financial conditions of the athletic fund. Now that the school is on a higher step of developing the physical side of life as well as the mental side we are hoping to have a good baseball team.

On March 18, a meeting was called for all boys interested in baseball. At this meeting there were thirty-five men out. On the following day all of the men reported to the baseball field and tryouts for the various positions were made. During the first week out the Coach was able to pick out the players for the different positions, although they were not permanent positions. The Coach had to use the best means possible to select the Varsity team from the thirty-five.

As the weeks passed on with hard practices each afternoon we were successful to schedule a game with the Missouri All-Stars of Columbia, Mo. The game was advertised well all over the city and all of the surrounding towns. All of the players played hard because no one knew as yet who the Varsity team would be composed of to represent the school. Besides being good players, the men had to hold a good mark in their school work.

On April 6, the game was called with the Missouri All-Stars of Columbia. As this was the opening game of the season, there was a large crowd and all of the student body supported the team because L. U. could not lose the first game. The game was called at 2:30 o'clock and President Jason tossed the first ball over the plate to the All-Stars. This was one of the most sensational games that the attendants ever attended. L. U. team played a good game of ball and won the game by a score of 17-1.

## SCHEDULE

April 6	L. U. ....	17	Missouri All-Stars..	1	at Jefferson City, Mo.
April 13	L. U. ....	18	L. U. Faculty.....	3	at Jefferson City, Mo.
April 20	L. U. ....	2	Jefferson City Sena- tors (White team)	10	at Jefferson City, Mo.
April 27	L. U. vs. Frisco of Kansas City, Mo.				at Jefferson City, Mo.
May 4	L. U. vs. Columbia, Mo.				at Jefferson City, Mo.
May 11	L. U. vs. Kansas City Royals				at Jefferson City, Mo.

# A Lincoln Bow



We make our bow dear Lincoln,  
To the school that always cheers;  
To the joy that turned to laughter  
Those sorrows and those tears.  
We bow to thee dear Lincoln,  
With the old love ever new,  
And with loyal hearts and voices,  
We make our bow to you.

We love thee dear old Lincoln  
And we pledge our faith anew;  
We will love and serve thee ever,  
With loyal hearts and true.  
Each task we did in earnest,  
And did it as was will'd  
In the spirit of the watchwords,  
Dear "Lincoln" and "we Build!"

To the God of all our nations,  
Our allegiance we will lend;  
To our country, born in freedom,  
With the blessings that attend;  
We bow to thee dear Lincoln,  
With the service spirit free,  
We will bow again with gladness,  
Our earnest loyalty.

—By KERMIT R. BOOKER



## ACTIVITIES



## Literary Club

*Left to right, back row—*

VERA GUDGELL, LEANETTA HILL, VIRGIE INEZ GREENE, ZENOBIA ALLIE JAMES, MARY ELIZABETH THOMAS, HENRIETTA PEARLEY, VIOLET KING, RUTH ALLEN

*Front row—*

A. V. TURNER, ROBA FARR, B. L. EDEN, GEORGE SCOTT, KERMIT BOOKER, J. REUBEN BENTON, C. A. BLUE, Advisor





## The Forum

THE Forum, a debating club, was organized October 6, 1928. A few Sophomores and Freshmen who were interested in discussing current events and in debating are responsible for the sponsoring of such a beneficial activity.

The Forum aims to instill or create interest and develop self-confidence in the Sophomore and Freshmen. It affords an avenue for training in debating, both formally and informally, which ordinarily students of these classes do not get.

Meetings are held bi-weekly at which time discussions are conducted by different members of the Club. Every other meeting is a social meeting in which informal discussions are held, and refreshments are served.

The Forum is accomplishing its purpose and its members are proud of its success and promise that this organization will be a credit to Lincoln University.

### OFFICERS

WM. B. WALKER . . . . .	<i>President</i>
ETHEL SHADE . . . . .	<i>Vice-President</i>
HORTENSE MILLER . . . . .	<i>Secretary</i>
GWENDOLYN TILFORD . . . . .	<i>Assistant Secretary</i>

### MEMBERS

IDELL ADKINS	ANN HAMMOND	PORTIA POWERS
ALFRED BLACKSHEAR	JENNETTA HATCH	ESTHER ROBERTS
JOHN BOYD	ALICE HOGUE	RUTH ROBERTS
RUTH BURTON	ARIEL KING	MOZELLA ROBINSON
LEWIS CLYMER	LOREE LESLIE	CLEMENTINE SEXTON
WENDELL DOUGLASS	HORTENSE MILLER	ETHEL SHADE
CLYDE EASTER	ALMA MUSE	GWENDOLYN TILFORD
MELZETTA FROST	MARLOWE NICHOLS	WM. B. WALKER
MAE GEARIN*	BASIL NORTH	ENNIS WHALEY
	LEWIS WRIGHT	



## History Club

THE History Club was organized October 16, 1928, under the sponsorship of Mr. W. S. Savage. The Club is composed of students who are interested in history, with her membership open to all who have had six (6) hours of history.

The main purpose of the Club is to broaden the knowledge of the students and to acquaint them with some phases of history that would probably not be discussed in class work. Each member strives to contribute something to the discussion at every meeting, which is, the first and third Tuesday nights in each month. The entire evening is given to discussions.

### OFFICERS

FRANCES RANDALL	President
MARY THOMAS	Vice-President
ELIZABETH ROSS	Secretary
MRS. NAOMI KEENE	Treasurer
ROBA FARR	Critic
MR. W. S. SAVAGE	Advisor

### MEMBERS

MARGARET CRAVENS	CHARLES PATTERSON
MARINDA FERGUSON	HENRIETTA PEARLEY
G. H. HAMILTON	WILLIAM ROSS
MRS. LENA JACKSON	JACK SCOTT
LOREE LESLIE	ALFRED STEVENSON
HORTENSE MILLER	NEIL STALING



## The Commercial Club

THE Commercial Club is an organization of students, pursuing courses given by the Commerce Department. Its activities are educational, inspirational, and social. It attempts to help the students in acquiring a practical knowledge of business as a profession.

### OFFICERS

KERMIT R. BOOKER	<i>President</i>
ALONZO WEST	<i>Vice-President</i>
MARGARETTE BURTON	<i>Secretary</i>
ROSE THOMPkins	<i>Assistant Secretary</i>
FRANCIS WALKER	<i>Treasurer</i>
MACK C. SPEARS	<i>Advisor</i>

### MEMBERS

RUTH BURTON	MELVON BYRD
ALLIE BELL POYNTER	FRED SMITH
ETHEL SHADE	MARSHALL BEASON
SARAH HUBBLE	ABRAHAM LINCOLN
ARIEL KING	BAKER TURPIN
ROSEMARY SMITH	IZOLA SHEPPARD

ARETTA SMALL



*Left to right—*

MARINDA FERGUSON, ELIZABETH ROSS, WILLIAM L. WYNN, CLEMENTINE SEXTON, PORTIA POWERS

## The Student Christian Association

THE Student Christian Association was formed in 1928, by the merging of the Y. M. C. A. and Y. W. C. A. It was thought that the combined organization could do more effective work when united.

The boys and girls have shown much interest at the meetings, which are held every two weeks.

The S. C. A. is somewhat new, therefore is not very strong as yet, but it has given promise of such great success that its influence will be felt over the campus.

### REPRESENTATIVES

WILLIAM WYNN, *Chairman*

MARINDA FERGUSON

CLEMENTINE SEXTON

PORTIA POWERS

ELIZABETH ROSS, *Assistant Chairman*



## Male Quartet

*Left to right—*

DEARMOND C. STEWART, *Bass*

ENNIS WHALEY, *Baritone*

GEORGE BROWN, *Second Tenor*

FINIS SIMMS, *First Tenor*



## Chorus

*Left to right, kneeling—*

BIRDIE MAE HENDERSON, MABLE GRADINGTON, ELIZABETH ROSS, DIMPLE WALKER, LOUISE THORNTON, CLEMENTINE SEXTON, MARINDA FERGUSON, LUCILE CLYDE EASTER, MELZETTA FROST, COZETTA COOPER

*Standing, front row—*

ROENA MUCKELROY, JOSEPHINE PAYNE, ROSEMARY SMITH, KATHERYN FROST, HENRIETTA PEARLEY, EUGENIA SWADER, ETHEL SHADE, RUTH BURTON, ELLENORIA BALL, DORIS KERFORD, PORTIA POWERS, GWENDOLYN SMITH, MARIE H. FORD

*Standing, second row—*

PRESTON BELL, WILHELMINA HARRISON, EDMONIA KERFORD, GEORGIA STEWART, DEARMOND C. STEWART, FINIS W. SIMMS, EDDIE LUCILE JONES, ARIEL R. KING, ALFRED L. STEVENSON, GEORGE H. BROWN, MARGARETTE BURTON, FLOREE ROBINSON, WENDELL DOUGLASS, ULYSSES COLLINS, MARLOWE NICHOLS, ENNIS WHALEY





## Girls' Glee Club

*Back row, left to right—*

E. LOUISE THORNTON, OPAL WOODS, MARINDA FERGUSON, MARGARET CRAVENS, MARGARETTE BURTON, WILHELMINA HARRISON, CLEMENTINE SEXTON, MARY E. COBBS, Accompanist; MARY L. RAY

*Front row—*

CLYDE EASTER, FRANCES RANDALL, JOSEPHINE PAYNE, ROSE MARY SMITH, ROENA MUCKELROY, Directress



## The Orchestra

*Left to right, back row—*

WILBER BERRY, AURELIUS WHALEY, ENNIS WHALEY, MARLOWE NICHOLS,  
JULIUS GATER, WENDELL DOUGLAS, FLOYD RAMEY, FRANCES WRIGHT,  
CORNELIUS ROSS, CHRISTOPHER STEWART

*Front row—*

THELMA JOHNSON, ELLA BROWN, FRANK YOUNG, MR. MACEO T. WILLIAMS,  
Director; CHARLES COURSEY, CLIFFORD LOGAN, GOLER COLLINS



CLUBS



## Le Beau Brummel

### *Top row—*

WM. M. CONNOR, *President*; AZZIE L. CAMPBELL, *Vice-President*; B. L. EDEN, *Secretary*

### *Middle row—*

FINIS SIMMS, JOSEPH BARNES, RICHARD E. KELLEY, TOLLIE ELLIOT, BASIL L. NORTH

### *Bottom row—*

ALFRED L. STEVENSON, *Assistant Secretary*; LEANDER ROGERS, C. A. BLUE, *Advisor*; EDWARD SMITH, TURNER G. WASHINGTON

### OFFICERS

E. V. PEPSICOE	Advisor
C. A. BLUE	Advisor
WM. CONNOR	President
A. L. CAMPBELL	Vice-President
B. L. EDEN	Secretary
A. L. STEVENSON	Assistant Secretary
GEORGE BROWN	Treasurer
A. C. LINCOLN	Sergeant-at-Arms
Motto—"By our deeds ye shall know us"	
Colors—Old Gold and Green	

LE BEAU BRUMMEL claims the distinct honor of being L. U.'s oldest young men's club organized for the purpose of promoting good fellowship and keeping the spirit of social activities ever alive on the campus. This Club was organized in the fall of 1920 and since that time up to the present date it holds a distinct honor.



## Delta Alpha Phi

Founded at Lincoln University of Missouri, November 1, 1923

*Colors*—Old Gold and Pink

*Flower*—Acacia

*Motto*—ΔΙΔΟ ΑΤΔΡ ΠΗΝΧΡΛΥ

*Left to right, top row—*

N. P. BARKSDALE, *Adv.*; ARTHUR SHROPSHIRE, *Sec.*; ROENA MUCKELROY, *Adv.*; ALPHONSO TURNER, MARSHALL BEASON

*Middle row—*

WENDELL DOUGLASS, GEORGE SCOTT, HADLEY H. HARTSHORN, WM. ROSS, ROBERT REID, WM. B. WALKER

*Bottom row—*J. H. GAITER, ARIEL KING, WM. L. WYNN, NATHANIEL FREEMAN, KERMIT BOOKER, DEARMOND C. STEWART



## Gamma Psi Epsilon Club

THE Gamma Psi Epsilon Club was organized March 2, 1929, by Mr. J. R. Benton (Kansas City Student). This Club is composed of college men only. We are very fortunate to have among our members, the leading musicians of the school, also men who are talented along other lines.

The Club has sponsored a "Clean-Up" week, something that has never been attempted, and for the benefit of the "Quill" it has given a minstrel, which was a great success.

There are many other things that the Club is going to do to help the school.

### OFFICERS

MR. J. R. BENTON	President
MR. O. H. HAMILTON	Vice-President
MR. F. D. YOUNG	Secretary
MR. W. BERRY	Treasurer
MR. C. A. PATTERSON	Chaplain
MR. E. WHALEY	Sergeant-at-Arms
MR. A. Y. LANDSDOWN	Business Manager

### MEMBERS

MR. G. LANDSDOWN	MR. E. EULENBURGH	MR. A. WHALEY
MR. M. NICHOLS	MR. H. WILLIAMS	MR. L. JOHNSON
MR. G. HAMILTON	MR. H. JENNINGS	MR. J. BREUER
MR. J. BOYD	MR. W. JENNINGS	MR. B. SALES
MR. C. N. STALLINGS		MR. Q. NEWSOME





## “La Portella Club”

MISS GLADYS BERRY . . . . . *Mother*  
MR. T. H. MILES . . . . . *Father*

*Colors*—Royal Purple and Gold      *Flower*—Marechal Neil Rose

*Date*—January 21, 1926

*Motto*—“Nothing but the best is good enough for us”

THE Portella Club was organized January 21, 1926, at Lincoln University, for the purpose of promoting a clean social life and a spirit of harmonious co-operation between the members.

At the initial meeting the Club elected the following officers:

ZENOBIA JAMES . . . . . *President*  
ALMA MUSE . . . . . *Secretary*  
GRACE WILLIAMS . . . . . *Treasurer*

The Club was given the name “Portella,” which means Joyful and Happy Girls. Our emblem, the star, is of Turkish origin, representing prosperity forever.

### MEMBERS

ALICE HOGUE	HORTENSE MILLER	LOUISE THORNTON
LEANETTA HILL	ALMA MUSE	GRACE WILLIAMS
ZENOBIA JAMES	ETHEL SHADE	LOREE LESLIE
VIOLET SLATER	VIOLET KING	VIRGIE GREENE
GWENDOLYN TILFORD	OPAL WOODS	DORIS LEE
WILLIE WATSON	JOSEPHINE PAYEN	DENZORA WYATT
MERCEDES THOMAS, <i>Honorary Member</i>		



## Pi Sigma Gamma

*Left to right, top row*

RUTH ROBERTS, FRANCES RANDALL, *President*; ROENA MUCKELROY, MARY E. THOMAS, MARINDA FERGUSON, RUTH ALLEN

*Bottom row—*

MARY L. RAY, ESTHER ROBERTS, MARGARET CRAVENS, HENRIETTA PEARLEY, ELIZABETH ROSS, MAE GEARIN

## History of the Pi Sigma Gamma Club

EARLY in the spring of 1926, a group of Sophomore College girls saw fit to organize a Greek-Letter Club for the Moral, Scholastic and Social uplift of the college young ladies. Consequently, a meeting was called and about 10 selected girls met and drew up the constitution upon which the Club was based. From that time on the Club has grown and has now become one of the most popular clubs among the girls.

The Pi Sigma Gamma Club has continued to grow and is now sustained by eleven girls and one advisor. All members of the Club must be above the Freshman College Class and must have a high scholastic standing. Meetings are held twice a month in Yates Hall Reception Room.

### THE PRESENT MEMBERS

MISS FRANCES A. RANDALL . . . . .	<i>President</i>
MISS MARINDA FERGUSON . . . . .	<i>Vice-President</i>
MISS MARGARET M. CRAVENS . . . . .	<i>Secretary</i>
MISS MAE GEARIN . . . . .	<i>Assistant Secretary</i>
MISS MARY LOUISE RAY . . . . .	<i>Treasurer</i>
MISS ROENA MUCKELROY . . . . .	<i>Advisor</i>



## Silver Leaf Club

### MEMBERS

NAOMI TIVIS	President
ROBERTA SCOTT	Vice-President
OLLIE M. NOEL	Secretary
SARAH HUBBLE	Assistant Secretary
ESTHER CLARK	Treasurer

CLYMITH BISCH  
 PRECIOUS R. HILL  
 IDELL ATKINS  
 MABLE GRADINGTON  
 ROBERTA SCOTT

ANNA PUGH  
 PAULINE BRITT  
 CHARLOTTE MADISON  
 MARGARET BURTON  
 DIMPLE WALKER

*Our Aim*—To establish a higher standard of social relationship on the campus.

*Foreword*—Life is like a picture; so paint it well.

*Flower*—American Beauty Rose

*Colors*—Silver and Rose



## Agriculture Club

*Left to right—*

ROOSEVELT WILSON, ISIAH HOLMES, RALPH SHROPSHIRE, L. ENGLISH, W. VANBRUEN, V. DICKSON, HAZEL PARSONS, CHARLES ROGERS, D. JOHNSON, M. GREENE, PAULINE FOSTER, RUTH LOGAN, A. RIGHT, E. COBBS, G. KENNISON, E. COOPER

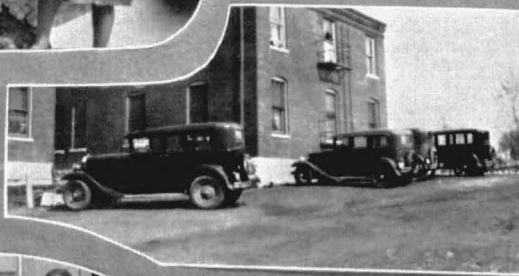
*Front—*

MR. HAMMONDS, *Advisor*

THE Agriculture Class in the High School was organized this year by their Agriculture Teacher, Mr. Hammonds. These students see the need of being acquainted with everyday life so as to be on speaking terms with the farmer as well as the educated person. Their aim is to uplift the ideas of the future individuals and train them to enter into the agricultural field because the world needs leading agriculturists.



S N A P S



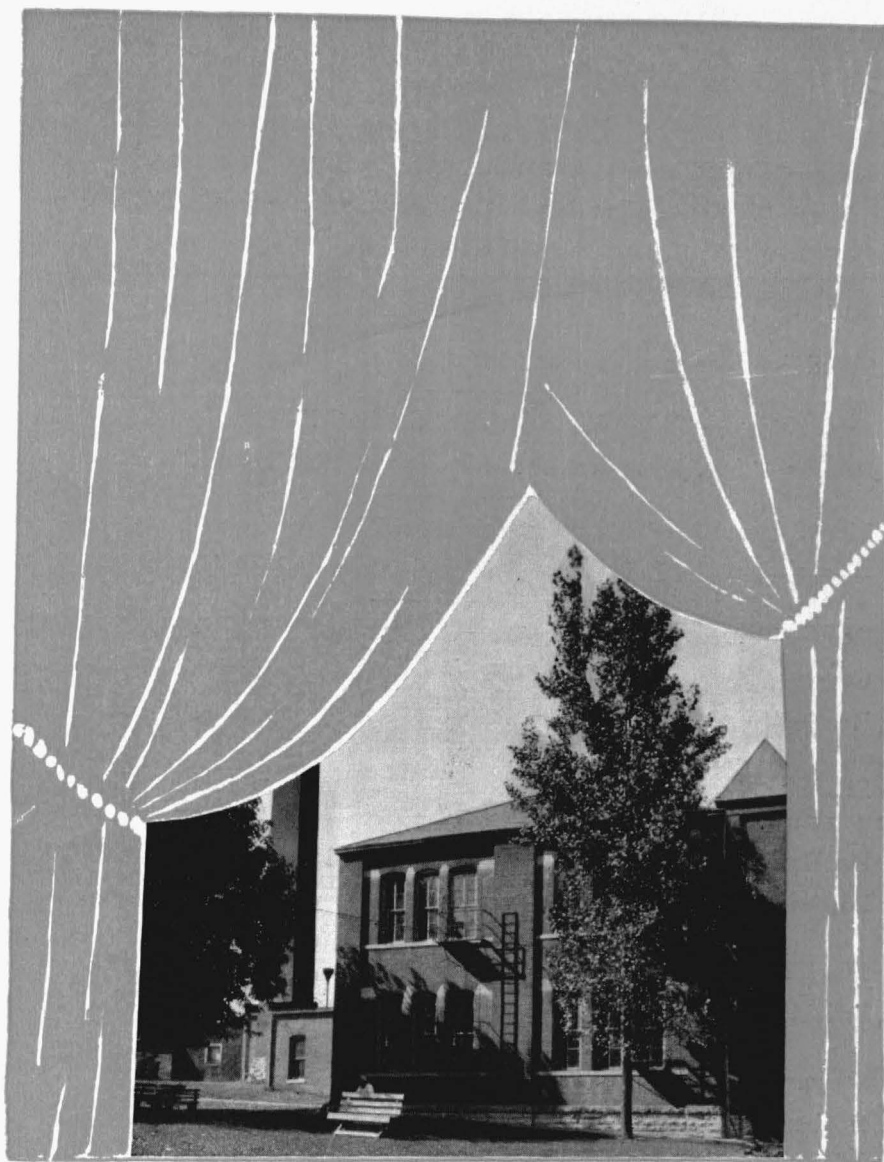












## HUMOR



# Jokes

---

Lady—"Officer, some men are shooting dice down the corner."

Officer—"Madam, what do you think I am, a game warden?"

---

"Are you a trained nurse?"

"Yes."

"Well, let's see some of your tricks."

---

Prof. Savage—"What is the Order of the Bath?"

Pauline—"Mr. Jason first, then Mrs. Jason, and then me."

---

Mr. Hammonds—"Did you milk the cow?"

—————"Yes I did, but the old fool wouldn't drink it."

---

Ross—"Where you gonna eat?"

Cayce—"Let's eat up the street."

Ross—"No, I don't like asphalt."

---

Blackshear (reading lab directions)—"It says here to line the iron with asbestos paper, fill with red phosphorus, and ignite."

Dr. Bate—"Very well, what is your trouble?"

Blackshear—"I can't find the bottle of ignite anywhere."

---

Mr. Diggs—"Do you eat often?"

Strickland—"Often what?"

---

Stewart—"Do you regularly attend a place of worship?"

Booker—"Yes, I'm on my way to see her now."

---

Mr. Brady—"When did Washington take his first ride?"

Freeland—"Uh-er-uh. When he took a hack at the cherry tree."

---

Baker—"Why, when my father was in condition, he could dive over a hundred feet into two feet of water."

Rocquemore—"That's nothing, my father once dove off the Eiffel Tower onto a damp rag."

---



# Jokes

Big Shrop—"The Biblical story of the Creation must have been written by a baseball reporter."

Little Shrop—"How come?"

Big Shrop—"Well, it starts off, 'in the big inning——'."

\_\_\_\_\_  
"Know what will stop falling hair?"

"Yeh, the floor."

\_\_\_\_\_  
He named his child Montgomery Ward because it was of the male order.

\_\_\_\_\_  
Josephine—"If you men would just quit looking at us girls in short skirts, we'd soon quit wearing them."

Smitty—"Yes, I suppose you'd have to do something drastic."

\_\_\_\_\_  
"No, sir; I care nothing for luxury, nothing. Why, I'd soon as not live in a tent, provided the plumbing was good."

\_\_\_\_\_  
Old Gentleman—"Pardon me, but aren't you from Manasquan?"

Deaf Old Lady—"How?"

Old Gent—"I say, aren't you from MANASQUAN?"

Deaf Old Lady—"Oh, Manasquan. Yes, yes, to be sure."

Old Gent—"Remember when we were children, how I used to turn you over my knee and spank you?"


Deaf Old Lady—"Yes, yes, you'd hardly know the old place now."

# Calendar




- Sept. 12—Freshmen look the campus over.
- Sept. 14—Registration Day.
- Sept. 16—Stewed potatoes for breakfast, boiled potatoes for dinner, mashed potatoes for supper.
- Sept. 18—Phelps tries to land the "Lee."
- Sept. 29—Privileges to the movies.
- Sept. 30—Opening season for Lincoln's football squad.
- Oct. 1—Coach Collins in a football uniform playing in a workout with the boys.
- Oct. 4—Lewis Clymer falls for L. T.
- Oct. 6—Freshmen, Sophomores, Juniors and Seniors begin to scuffle with Mlle. Berry. (Francaise.)
- Oct. 10—V. S. conquers the football king, while he is playing off side.
- Oct. 13—Lincoln is defeated by Wilberforce U.
- Oct. 14—Sophomores initiating the Freshmen.
- Oct. 18—Seniors entertained by Sophomores.
- Oct. 31—Halloween social—Miss Bird Dog—Miss Farr carrying the worthy prize.
- Nov. 5—Easter loses to Thornton, Thornton to Burton, Burton to Williams, Williams back to Easter. What could this be that travels and then comes back to the same point from which it started?
- Nov. 14—Homecoming Day.
- Nov. 17—Phelps falls for Gwendolyn.
- Nov. 20—Who went to view the old capitol walls? Ask Pres. Jason.
- Nov. 24—About nine o'clock every student and faculty member could be seen moving hither and thither around the President's home. In a few minutes one could detect their business. They were trying with all their might to save household furnishings and also the building from fire, and with the assistance of the fire department, the property was saved.
- Nov. 27—Thanksgiving brought not only our "*Noodle and Chicken*" dinner, but also the Western University eleven to meet our fighting Tigers on the gridiron. Many spectators witnessed the downfall of W. U. with a score 13-0. The social given for W. U. proved enjoyable for all.

# Calendar

- 
- Nov. 30—Zenobia, you may mean all in the world to Shropshire, but you certainly seem like a mother to his schoolmates.
- Dec. 8—Was the do or do not for the Freshmen who had been known on the campus by their blue and white head dress. There was much-ado among the students in general, pep a plenty, and some good punches that can be better told by Mr. Shropshire and Eden. The game ended with a score of 0-0. Of course, the freshies lifted their caps, and were even granted privileges to the movies.
- Dec. 10—Those blue sweater boys, W. C. and H. H., getting bad breaks.
- Dec. 11—I went to the Jefferson Theatre and what did I see after the show? Oh, well, it was just Zenobia James and her son "Shrop" outside the door. How long? How long?
- Dec. 17—A certain senior young man seen talking to a certain junior girl. He's an "A" student and the young lady is too. Did you ever?
- Dec. 18—The pre-holiday social committee are seen quite frequently. This is a sign that Xmas holidays won't be long. Le Beau's made a grand promenade to the beautifully decorated music room, there spending the evening in dancing and dining.
- Dec. 19—Mr. Connor, a Senior, lost his lady friend completely. Tough breaks, Xmas present, party fees, and farewell to the good lady friend.
- Dec. 20—Delta Alpha Phi spent an enchanting evening with their lady guests under the low lights of the music room when the Collegiate Kids were at their height of perfection, playing the latest hits. This was the "Warmer" of the season.
- Dec. 21—What time does the train leave for K. C., St. Louis, Sedalia, St. Joseph, was heard asked by a hundred or more students. Among those were Loree Leslie, Hill, Lee, Benton, Connor, Clark, Simms and Baker. This means we are leaving old L. U. and its activities until Jan. 3, 1929.
- Jan. 1—Arrival of early Lincolnites—Hill, Clark, and Hubble.
- Jan. 4—Beginning of class work again.
- Jan. 8—Annette Overton recites.
- Jan. 10—So cold your breath freezes and you bump your head on it.
- Jan. 28—Yates Hall lights stay on all night.
-

# Calendar

- 
- 
- Jan. 29—Everyone is writing notebooks.
- Jan. 30—Beginning of first semester Exams. Of course Walls doesn't mind that old French.
- Feb. 2—Marlowe sees his shadow.
- Feb. 5—New student arrives, Syl Sims and others.
- Feb. 7—Seniors sponsor Quill Carnival in gym.
- Feb. 7—Syl makes early debut with Miss Hubble to the movies.
- Feb. 10—Initiation of Delta Alpha Phi Club. Turner, Walls and others send notorious letter to Portellas.
- Feb. 14—The Portellas entertain with a valentine party in the music room. Hilarious times are had at such gatherings; so no one was deceived with the unique and youthful entertainment.
- Feb. 22—Washington's birthday celebrated by a half-day. Mr. Barksdale speaks in chapel.
- Feb. 23—A bunch of Lincolniters journeyed to St. Louis to cheer the basket ball teams in their struggle with the "Too fast" St. Louis team.
- Feb. 27—Ex-Governor Baker speaks in chapel.
- Mar. 4—Virgie and Vi's initiation begins for the entrance in Portella Club.
- Mar. 6—Pres. Demands that young men to stop studying astronomy in ladies' dormitory windows.
- Mar. 10—Dr. Bate lectures in chapel on Religion in Science.
- Mar. 19—Gamma Psi Epsilon sponsor a clean-up campaign.
- Mar. 22—Dismissal for Easter vacation.
- Mar. 25—Abbott, Kingsberry, Ferguson, and Hatch still found on missing list.
- Mar. 31—Easter Cantata presented by Chorus.
- April 1—A big dance given by the Pres. at the State Park for those having escorts. Admission free for outsiders. Bennie Moten's Orchestra playing. April Fool!
- April 6—Gov. Caulfield visits chapel exercise and speaks favorably to the erection of our new buildings—a gym and an academic building.
- April 7—That affair of Eulingberg's; E. C.; F. R.; D. L.; and C. E.
- April 10—Pres. Jason gives an open house reception in appreciation of the assistance given by the students in saving his home from complete destruction.
-

# Calendar



- April 13—The Lincoln baseball defeats Columbia. Farr, Shropshire and Young starring for L. U.
- April 16—The Tennessee Minstrel presented by Gamma Psi Epsilon Club. Plenty of scandal.
- April 23—Pi Sigma Gamma entertained at the home of Miss Julia Young.
- April 26—The Musical Department presents "The Bells of Beau-Jolais." Misses Clark, Harrison, Ferguson, Horde, and Easter charmed the audience with their melodious voices. Mr. Eulingberg, Benton and Campbell showed excellent stage decorum.
- April 27—Mrs. I. Hill not seen on campus.
- May 3—Le Beau Brummel's spring prom.
- May 7—The Parson's Vacation. Sponsored by the Methodist Church.
- May 9—Faculty play.
- May 13—Closing of Washington School begins.
- May 15—The Seniors will wear their robes—"I guess."
- May 26—Baccalaureate Sermon.
- May 30—Senior Class Day.
- May 31—Closing exercises. Everyone bids Lincoln good-bye, some for a few months, some forever, and some will be left behind.
- June 1—Who knows?

## High School Social Calendar

THE first social given for the High School was the Introductory Social given in Lincoln University's gymnasium.

As we entered we were introduced by our hostess, Mrs. Hill. We were very fortunate to have our music furnished by Frank Young's Collegiate Kids. The gymnasium was very beautifully decorated by some of Lincoln's art students.

Halloween was celebrated as usual by a masquerade social in Lincoln's music room. Some of the very attractive persons were as follows: Miss Edith Nearguard, Miss Anne Walker and Miss Eugenia Swader, dressed as dancing dolls. Miss Dorene Johnson, Miss Hazel Parsons and Miss Lois Benson were dressed as pirates. Miss Catherine Frost, Miss Mary Flournoy and Miss Rosemary Smith were dressed as young children.

# Quill Staff



*Editor-in-Chief* . . . . . WM. CONNOR  
*Faculty Advisor* . . . . . N. P. BARKSDALE

## COLLEGE

*Business Manager*  
JESSE DREW  
*Advertising Manager*  
KERMIT BOOKER  
*Literary Editor*  
WILLIAM PROCTOR  
*Society Editor*  
ZENOBIA JAMES  
*Snapshot Editors*  
TURNER WASHINGTON  
DEARMOND STEWART  
*Sport Editor*  
GEORGE BROWN  
*Typist*  
WILHELMINA HARRISON

## HIGH SCHOOL

*Editor*  
RODERICK ELLINGTON  
*Business Manager*  
EUGENE COOPER  
*Snapshot Editor*  
ANN WALKER  
*Society Editor*  
EUGENIA SWADER  
*Sports*  
ROY LEE JOHNSON  
*Girls' Sports*  
ROSEMARY SMITH  
*Art Editor*  
CLARK DONALDSON





# ADVERTISEMENTS

SAFE----FRIENDLY  
P R O G R E S S I V E  
S Q U A R E   D E A L I N G

---

*Able and Willing To Serve*



CAPITAL, SURPLUS, PROFITS

*over*

\$380,000.00

RESOURCES - - - - - \$5,200,000.00



This space  
kindly contributed

*by the*

*Dubinsky Bros. Stock Co.*

*Operators of the*

Miller and Jefferson  
Theatres

## CAPITAL FRUIT *and* PRODUCE COMPANY

133 WEST HIGH STREET

PHONE 1167

L. H. KIRK  
H. E. ROBINSON



FRESH FRUIT AND  
VEGETABLES

*Wholesale and  
Retail*

---

## Moerschel's Soda—Ice—Coal

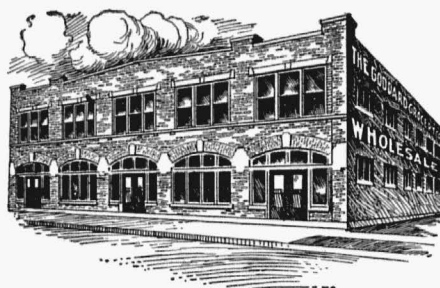
COCA-COLA  
IN BOTTLES

*"Dealers in  
Temperature"*



PHONES

SODA—ICE, 27      COAL, 113



## GODDARD *Grocery Co.*

---

## Central Garage

A. E. LONGENECKER  
PROPRIETOR and MANAGER

*Sales and Service*

GRAHAM-PAIGE  
AUTOMOBILES

PHONE 1127

129 W. HIGH ST.

---

## J. D. Reed Coal Co.

Guaranteed Genuine  
ZEIGLER COAL

*Much Hotter and  
Cleaner*

REAR, 426 W. MAIN

Phones: OFFICE 1202, or 602 BLACK

LAUNDRY-WASHED CLOTHES  
LAST LONGER

*We Use Soft Water*

## Capital City Laundry

*The Laundry Does It Best*

PHONE 303      315-17 MONROE

## Star Cleaning & Dyeing Company

*Cleaners of*

FINE WEARING APPAREL  
and HOME FURNISHINGS

E. E. RALLS  
*Manager*

626 E. HIGH ST.      PHONES 318-1646  
JEFFERSON CITY, MO.

## *The* UNIVERSITY LUNCH ROOM

"OPPOSITE THE GATE"

Meals and Refreshments  
at all hours

*Barbecue That's Famous*

## Purity Ice Cream Co.

G. A. SCRUGGS  
*Proprietor*

ICE CREAM, ICES and SHERBETS  
BUTTER AND CREAM

*Wholesale and Retail*

PHONE 120      618 E. HIGH STREET  
JEFFERSON CITY, MO.

## *Promptness In Banking . . . .*

EVERYTHING in SAFE BANKING is CON-  
DUCTED with dispatch here.

COURTESY, SECURITY AND ACCOMMO-  
DATION are extended to all.

IF without a CHECKING ACCOUNT, we'd like  
your BUSINESS.

## *Central Missouri Trust Co.*

## *A. Brandenberger Drug Co., Inc.*

*"The Rexall  
Store"*



130 E. HIGH STREET

JEFFERSON CITY      MISSOURI

## *Meachum Cafe*

*Home-Cooked Meals of Quality  
and Satisfaction*

BARBECUE—FISH  
ICE CREAM  
SODA WATER

713 E. ELM STREET

*Compliments  
of the*

## *Missouri Light & Power Company*

N. R. BEAGLE  
*Manager*

## *Ice Cream*

ALL KINDS

ALL DELICIOUS

FOR ALL OCCASIONS



MOBERLY  
MEXICO

JEFFERSON CITY  
BOONVILLE  
CALIFORNIA

SEDALIA  
FULTON

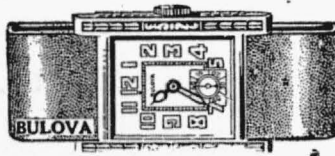
TIRES *and* BATTERIES

## *City Tire & Battery Company*

KEMP ASEL, *Proprietor*

205 CAPITOL AVE.      PHONE 1152

*O. C. Stegmaier  
Jeweler and Optometrist*



219 E. HIGH STREET



## EVIDENCE *of* GROWTH

During 1928, the Capital City Telephone Company gained 194 stations.

Average number of calls per day was approximately 33,000.

During the busy periods of the day each operator will complete approximately 589 calls per hour.

It requires a force of 50 people at the present time to render satisfactory local and long-distance service.

*It Isn't a Home Without a  
Telephone*

CAPITAL CITY TELEPHONE  
COMPANY

---

*Dodge Bros.  
Motor Cars and Trucks*

*Plymouth Motor Cars*

DECKER MOTOR CO.

OPPOSITE POST OFFICE

PHONE 241

## *Jefferson Cleaners*

CLEANING—PRESSING  
ALTERING

TAILOR-MADE  
SUITS

222 E. HIGH

PHONE 982

## L. U. ELECTRICAL REPAIR SHOP

Expert Shoe Repairing  
at Fair Prices

*Opposite Yates Hall*

S. P. JOHNSON, *Proprietor*

*Compliments  
of the*

## NEHI

BOTTLING CO.

The Students and Faculty  
of Lincoln University  
thank the merchants of  
Jefferson City for the aid  
they have given in mak-  
ing this book possible.

*Eat the Best*  
HUB and QUAKER

## BREAD

JEFFERSON CITY  
BAKING CO.

FINE GROCERIES  
*and MEAT*

## *The A. F. Schwartz* Market

*Two Markets*

616 E. HIGH STREET  
PHONE 235

CORNER MADISON AND DUNKLIN STREETS  
PHONE 90

## East End Drug Company

HIGH AT LAFAYETTE

DRUGS, TOILET REQUISITES  
*and*  
SCHOOL SUPPLIES

## SCHOTT BROS.

CLEANERS

*We Are the Oldest and  
Best in Central Missouri*

ASK THE FACULTY



## The thrill that Comes Once in a life time

**W**HEN you open the first shipping case....what a happy thrill!.... if your Annual is "Kraft Built." It is a glorious culmination to your months of arduous labor when you find that the final steps in the building of your book have skillfully made your dreams into a beautiful reality. Don't take any chances; be sure your book will cause a thrill of satisfaction; be sure it is "Kraft Built."

**THE HUGH STEPHENS PRESS**  
KRAFT BUILT  SCHOOL ANNUALS  
JEFFERSON CITY, MISSOURI



## MILLER CLOTHING CO.

*Home of*  
HART SCHAFFNER & MARX  
GOOD CLOTHING

ROY COBBLE and ED. PAYNE  
*Proprietors*

129 E. HIGH ST.      PHONE 1866

## RACKERS AND RACKERS

*Commercial Studio*

212 MADISON STREET

JEFFERSON CITY      MISSOURI

## *The* COMPLETE OFFICE *and* SCHOOL SUPPLY STORE

*Tallies, Playing Cards  
Score Pads and  
Greeting Cards*



## *Botz* OFFICE SUPPLY & STATIONERY CO.

209-211 MADISON

## *Davis Art Shop*

PLEATING — HEMSTITCHING  
Mend - a - run in Silk Hose

311 MONROE STREET

COUNTRY TRIPS  
REASONABLE

HEATERS IN  
ALL CARS

## JOE'S 25c TAXI

JOS. RANDAZZO, *Proprietor*

*Cars for Funerals and  
Weddings*

PHONE—1234—PHONE

We Meet All Trains—24-Hour Service  
*Office at Central Hotel, JEFFERSON CITY, Mo.*

## *Tolson Drug Company*

*Drug Store on the Corner*

DRUGS *and* TOILET  
ARTICLES

606 — PHONES — 702

Eye, Ear, Nose, Throat      X-RAY, RADIUM  
Fitting of Glasses      General Diagnosis

J. S. SUMMERS, A. M., M. D.

J. T. LESLIE, M. D.

7TH FLOOR CENTRAL TRUST BLDG.

PHONE 399

JEFFERSON CITY, MO.

*Associated With Dr. Summers*  
DALE and GLENN SUMMERS, *Reg. Optometrists*



AFTER ACQUIRING YOUR EDUCATION TO MAKE  
THE BATTLE OF LIFE A REAL VICTORY AND  
COME TO THE FURNISHING OF A HOME

*Remember*

# CREVELT'S

*Home Furnishers*

PHONE 343

106 WEST HIGH STREET



*Accept Our Felicitations and Best Wishes*

## SILVERTOWN CORDS

BEST IN THE  
LONG RUN



*Harry Blackwell*  
INCORPORATED  
CONSCIENTIOUS AUTO SERVICE

## *J.C. Penney Co.*

121-123 E. HIGH STREET  
JEFFERSON CITY

*Operating the Largest Chain  
Department Store Organiza-  
tion in the World*





## John H. Rodeman

HARDWARE  
IMPLEMENTS  
SUPPLIES

SEEDS  
EXPLOSIVES  
SADDLERY

AUTOMOTIVE  
PARTS

413-415 W. MAIN STREET

PHONES 232-2000

## Shryack - Hirst Grocery Company

WHOLESALE  
GROCERIES



JEFFERSON CITY, MISSOURI

## AT YOUR SERVICE

Very likely we can assist,  
by suggestion, in the se-  
lection of shoes your cos-  
tume demands.

## ALLEN "A" HOSIERY

We invite the return of  
any pair not satisfactory.  
We have few returns.

\$1.00 TO \$2.50

## WEATHERBY'S

HOLLERORTH & WISCHMEIER

122 EAST HIGH STREET

## PELTASON'S *Dry Goods Co.*

227 MADISON STREET

*They Know What You  
Want*

COMPLETE LINE  
OF

LADIES' and CHILDREN'S  
READY-TO-WEAR  
GARMENTS



BUTTER TOP BREAD

*Tops 'em All*

## Capital Bakery

620 E. HIGH ST.

PHONE 660

## Raithel Bros.

*Dealers in all kinds of*

HOME-KILLED MEATS AND  
SAUSAGES, FISH, OYSTERS,  
AND DRESSED POULTRY,  
HOME SUGAR-CURED  
BACON AND HAMS

PHONES 108-109

221 E. HIGH

## ED. UNWIN

DEALER IN

HARDWARE, TINWARE, STOVES  
AND RANGES, CUTLERY, Etc.

*Builders' Hardware a  
Specialty*

112 E. HIGH STREET

JEFFERSON CITY

MISSOURI

PHONE 491

PURINA CHECKERBOARD  
CHOWS

*for*

HORSES, MULES, COWS, HOGS  
CHICKENS

Try these superior feeds  
on your livestock projects

Jefferson City Produce Co.

*Checkerboard Feed Dealers*

MAIN AND HARRISON STREETS

*Compliments of*

## CLIBOURNE'S

DRY GOODS STORE

*The Little Store With  
Big Values*

223 E. HIGH ST.

PHONE 23

## Jack King

SHOE SHINING PARLOR

HATS CLEANED AND BLOCKED

*Work Guaranteed*

528 LAFAYETTE

GOOD THINGS

TO EAT

## WRIGHT'S CLEAN GROCERY

**D-W Pl Drug Store**

PHONE 135

JEFFERSON CITY, MO.

*Compliments of*

OTTO SLANKER

*Plumbing and Heating Co.*



325 MADISON STREET

PHONE 742

---

BURKEL & BOSCH

*Dealers in*

EXCLUSIVELY FINE FOOTWEAR

*Quality and Quantity*

REPAIRING NEATLY DONE

PHONE 501



Jefferson City Piggly-Wiggly

220 EAST HIGH

# *Your Interests Safeguarded*

## WHEN YOU BUY

DULLE'S PATENT FLOUR  
CAPITAL STAR FLOUR  
RED SEAL SELF-RISING FLOUR  
DULLE'S BEST HARD WHEAT FLOUR

---

*75 Years of Progressive Milling*

---

## G. H. DULLE MILLING CO.

JEFFERSON CITY, MO.

ATWATER-KENT

*Radio*

ELECTRIC AND BATTERY  
TYPE

Ranging in price from  
\$95 to \$178



*Call for Free Demonstration*

STOKES  
*Electric Company*

PHONE 719

225 E. HIGH

KUNZ  
25c

Cab & Baggage  
Company

PHONE 1626

932 E. MILLER ST.



*Nite or Day  
Service*

TRAIN CALLS

PARTY CALLS

WE WELCOME SMALL ACCOUNTS AS WELL AS LARGE ONES

**S**YSTEMATIC  
AVING  
PELLS  
UCCESS

*Your Savings Will Be Safe In*

## The Exchange National Bank

JEFFERSON CITY, MO.

“THE BANK FOR YOUR SAVINGS”

PAINTS—WALLPAPER

*Get them at*

**Schoenen Paint and  
Wallpaper Co.**

213 E. HIGH STREET  
JEFFERSON CITY, MO.  
PHONE 1410

*Compliments*

*of*

DR. R. G. RICHARDSON

PHONE 644  
215½ JEFFERSON STREET

*The*  
**Reliable Store**

227 E. HIGH STREET  
Goods of highest quality  
at the lowest price  
Clothing and Shoes for  
Men, Women, Children  
N. COHEN  
*Proprietor*

FOR FINE CLOTHING

**Max Meyerhardt**

125 E. HIGH STREET  
JEFFERSON CITY      MISSOURI



TELEPHONE 110 100 E. HIGH

## SCHELL MUSIC CO.

PIANOS, PLAYERS, RADIOS,  
EDISONS, UKES, BANJOS,  
GUITARS, VIOLINS, ORTHO-  
PHONIC VICTROLAS, BAND  
INSTRUMENTS, PLAQUES,  
PICTURES, MOLDINGS,  
WALL PAPER, SHEET  
MUSIC, RECORDS

*Jefferson City's Oldest Music Home*

**CZARLINSKYS**  
"CLOTHES FOR LAD AND LADY"

*Opposite the Courthouse*

## KING GROCERY COMPANY

PHONE 1346  
600 LAFAYETTE STREET

FRESH MEATS  
*and*  
VEGETABLES

Give Us Your Party Business  
It Will Be Appreciated

BEST WISHES  
*to*  
LINCOLN UNIVERSITY

May you achieve your highest  
aspirations for the greatest and  
most influential University for  
colored students in America.

## THE NEW DAY PRESS

*Complete Printing Service*

PHONE 802

JEFFERSON CITY, Mo.

## Footwear

OF THE BETTER SORT

The newer styles may always be  
found here, with exquisite hosiery  
to match—

—and at moderate prices.

STANDARD BRANDS

are featured

SHERWOODS  
ARCH-AID  
BUSTER BROWN  
GLOVE-GRIP  
BOSTONIANS

Careful Fitting

Courteous Sales People

*We Invite You*

**Schultz's**  
SHOE STORE

## Dr. Louis Ott

FIRST fellow in Jeffer-  
son City to come  
straight out and tell  
everybody to bring up  
their catalogues and he  
would meet their  
PRICE AND THEN  
ACTUALLY MEET  
THEM





WORKINGMAN'S STORE

SNAPPY \$15.00  
2-PANTS SUITS

*Our Specialty*

102 E. HIGH STREET

WHITEWAY BARBER  
SHOP

QUICK, SANITARY, EXPERT  
SERVICE

*"We Know How"*

528 LAFAYETTE STREET

COLLEGES, RESTAURANTS *and* HOTELS  
can obtain quick service when in need of  
supplies by either writing, wiring or telephoning

SID CONDUCT

208 S. OHIO

SEDALIA, MO.

BECKLEY CARDY  
COMPANY

SCHOOL FURNISHERS

School Equipment and Supplies of all kinds

*Manufacturers—Wholesalers—Publishers*

BETTER MERCHANDISE — LOWER PRICES

Our Prices Are Always the Lowest on  
Guaranteed Quality Merchandise

17-21 EAST TWENTY-THIRD ST.

CHICAGO, ILLINOIS

## S. McCormick

*Ladies' and Gents'  
Custom Tailor*

CLEANING—ALTERING  
PRESSING—REPAIRING

117 E. HIGH ST.      PHONE 1063

## THE NU-WAY SHOE SHOP

B. H. LOGAN  
*Proprietor*

Shoes repaired by the  
latest methods with  
modern equipment

LAFAYETTE STREET

*For*  
FINE DIAMONDS, WATCHES  
AND OTHER GIFTS

*See*  
Phil. A. Dallmeyer

*Jeweler and  
Optometrist*

218 E. HIGH STREET

## G. A. Fischer Drug Co.

105 EAST HIGH STREET

A. G. SPALDING  
ATHLETIC SUPPLIES

QUALITY HOMES ARE INSURED

*If You Use*

## Certified Lumber

Certified Lumber is best because it is pro-  
duced by Mills which have the best timber

## SCRUGGS-GUHLEMAN LUMBER CO.

TWO PHONES—457-475

“CERTIFIED LUMBER IS BETTER”

*Compliments*  
*of the*  
**Capital City  
Water Co.**

---

JEFF. CITY MOTOR CO.

LINCOLN—FORD  
FORDSON

PHONE No. 2

328 E. CAPITAL AVENUE

JEFFERSON CITY

MISSOURI

---

**Jefferson City  
Produce Co.**

*Wholesale*

FRUITS—VEGETABLES  
FEED

JEFFERSON CITY, MISSOURI

PHONES—572—124

**Lincoln Cafe**

COLD DRINKS—LUNCH  
ICE CREAM

*Also Taxi Service*

PHONE 1455

901 E. ATCHISON STREET  
AUGUST CLARK, *Proprietor*

---

***“Say It With Flowers”***

Bouquets and Sprays for Parties,  
Dances, Mother's Day, etc.  
Prices very reasonable.

**Hugo Busch**  
*Florist*

MADISON AND DUNKLIN STREETS

---

**Schell & Ward**

101 E. HIGH STREET

*Make Our Store Your Headquarters*  
*For*  
SHOES *and* HABERDASHERY

---

**BARTLETT  
BOOK STORE**

BOOKS AND STATIONERY  
WALLPAPER  
DEVOC PAINTS  
WINDOW SHADES

